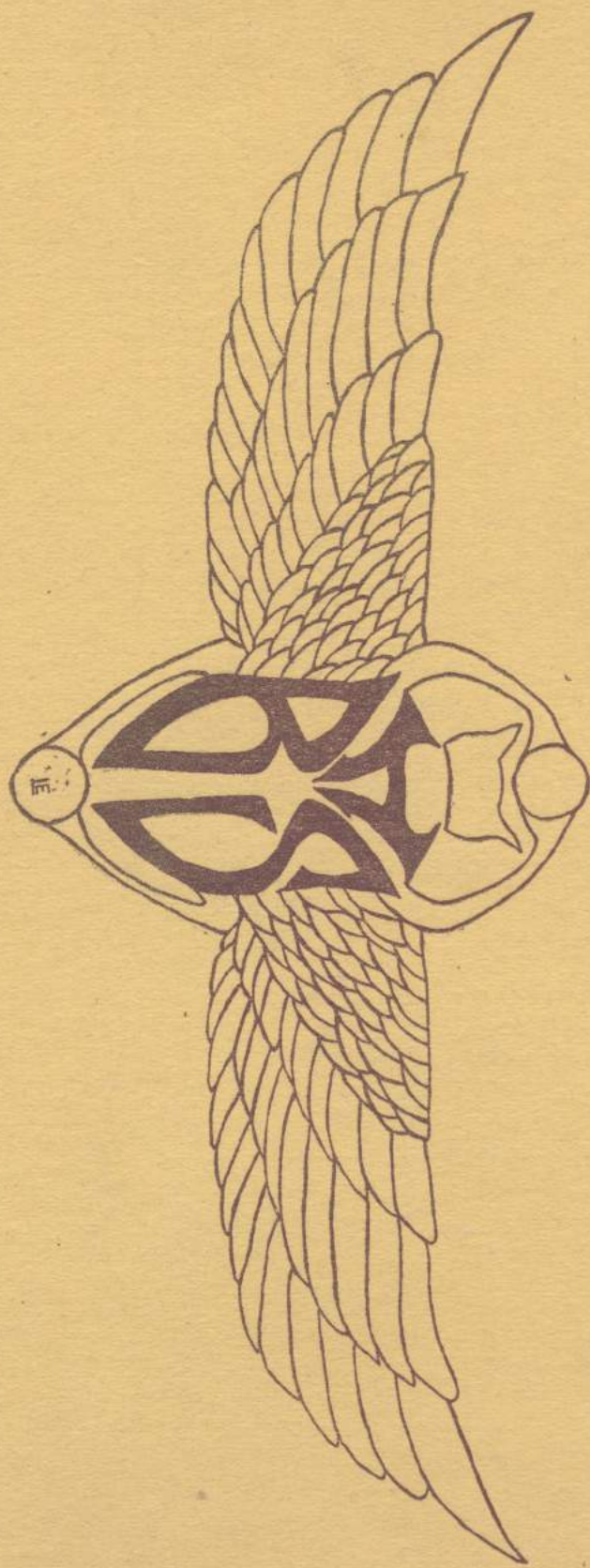


your Year



Gift - Ray Atkins

For Signatures



Dedication



To the loyal friend of every high school student
and every high school enterprise,

OUR PRINCIPAL,
JOHN E. ALMAN



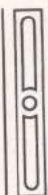
Staff



Editor in Chief	-----	Gertrude Blake
Assistant Editor	-----	Marian Davis
Business Manager	-----	Clifford Porter
Athletics	-----	Earl White
Jokes	-----	Aline Bollman
Social	-----	Mildred Baxter
Cartoonists	-----	Edna Lauger
	-----	Merritt Wemple
	-----	Charles Ames
Faculty Advisor	-----	J. Frances Graves



Faculty



MR. LEWIS A. REISNER
Superintendent.

MR. JOHN E. ALMAN
Principal—History.

MISS J. FRANCES GRAVES
Asst. Principal—German.

MISS MABEL E. GILCHRIST
English.

MISS BLANCHE CHEWNING
English.

MISS ISABEL VANDERVORT
History and English.

MISS JOSEPHINE WAGNER
History and Algebra.

MISS MARGARET HARVEY
Latin.

MISS FLORA FELLOWS
Geometry.

MISS HELEN B. VIELLS
Algebra.

MISS MARTHA LINDQUIST
Hygiene, Physicography and
Commercial Geography.

MR. HARRY L. COLE
Chemistry and Agriculture.

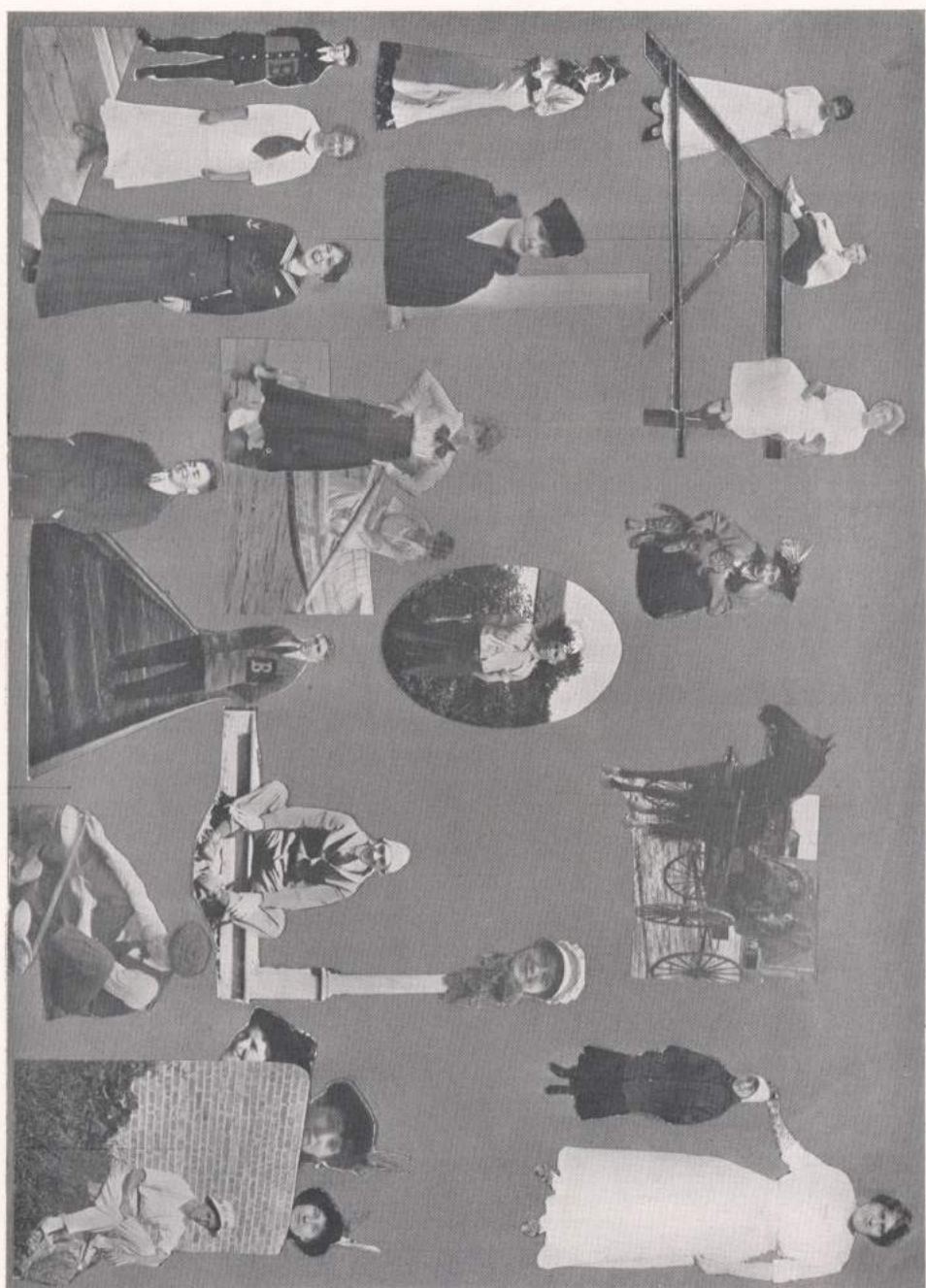
MR. PARKER NOLL
Physics, Botany, History.

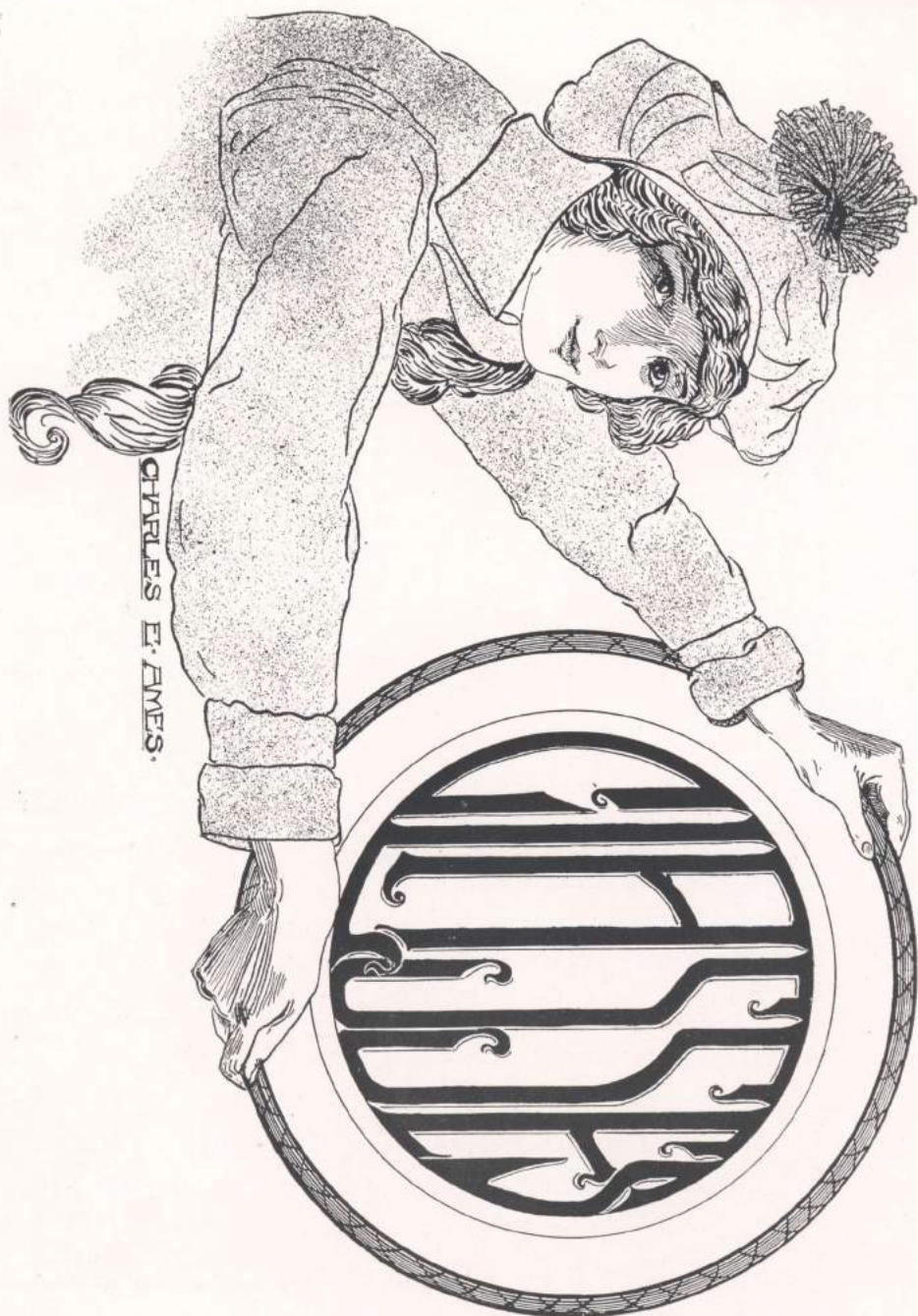
MISS LOUISE LAWRENCE
Commercial Branches.

MISS LILA I. LEWIS
Art.

MRS. MARJORIE WOODS KEELEY
Music.

MR. M. L. HEITZER
Manual Training.





Class Officers

President	-----	Gail Birkett
Vice President	-----	Alzora Adams
Secretary	-----	Elizabeth Sager
Treasurer	-----	Earl White



Motto—"Instead of being made, make yourself."

Flower—The sweet pea.

Colors—Orange and black.

Class History

I. Prehistoric Period—September, 1912-June, 1913.

This period is marked by the entrance of a class, which historians would no doubt consider a simple folk, but for whom they could prophesy a wonderful place in the annals of Delvidere High School. Only fragmentary accounts are kept of this period, but we can make out from these that the invaders (if such they may be called) gathered together to vote upon a leader from among their own people. King "Bud" Cleaver was unanimously elected, but his reign was short and uneventful.

II. The Middle Ages—September, 1913-June, 1914.

The one event which stands out as most prominent is the coronation of King Neff, who we will see had not only a successful reign, but one filled with world renowned events.

The best athletes of the class were chosen to make up a basket ball and football team. These boys afterward proved to be the main supports.

Some, not finding the industrial conditions suitable, separated from these people and found new occupations.

III. Period of Renaissance — September, 1914-June, 1915.

A period of prosperity in which the social, financial and industrial life of these people is greatly changed, as follows:

Political—King Neff's royal plume waves in advance for a time, then King Dodson was elected to take his place.

Social—Reception given by Juniors to Seniors.

Financial—Almost a panic, for it was found

that they had entertained a large class at a costly reception.

Industrial—Work more difficult.

IV. Historical Period—September, 1915-June, 1916.

All the great events which mark an historical period have been chronicled at this time. There is this only to add:

Political—King Birkett was elected leader. Parties were formed between which there was considerable dissention, but peace was finally obtained. There was also a great magistrate, for each of the natives was given a charter to see new lands by the permission of Alma Mater.

Note: Charter—A diploma signed by the Board of Education.

ELIZABETH SAGER,
Secretary.



GAIL BIRKETT

"Doc."



Editor of "Scoop" (4)
 Class President (4)
 Minstrel show (2)
 Sphinx reporter (1), (2)
 Football (3), (4)
 Athletic Association (1), (2), (3), (4)
 Class Play (4)



*"He is such a busy man, he
 hasn't even time for girls."*

WILLARD CLEAVER

"Buddy."



President of Class (1)
 Baseball (1)
 Basket Ball (1), (2), (3), (4)
 Captain of Basket Ball Team (2), (4)
 President of Athletic Board of Con-
 trol (4)
 Tennis Tournament (2), (3), (4)
 Breaking of Ground (4)
 Class Play (4)



*"Best in athletics, a good
 student, a booster, a general
 favorite—what more can one
 say?"*



ALZORA ADAMS



Glee Club (3)
Chorus (1), (2), (3), (4)
Vice President of Class (4)
Booster Club (3)
Treasurer of Booster Club (4)
Reporter of "Scoop" (4)
Literary Society (4)
Camera Club (3)
Class Play (4)



"She never puts off, till to-morrow what she can do to-day."

EARL WHITE

"Lefty."



Athletic Editor of "Scoop" (4)
Athletic Editor of Yearbook (4)
Football (3)
Treasurer of Class (4)



"He most lives, who thinks most, feels the noblest, acts the best."

ELIZABETH SAGER

"Buster."



Chorus (1), (2), (3)
Glee Club (1), (2), (4)
Glee Club Operetta (2)
Booster Club (3)
Secretary of Class (4)
Class Play (4)



"The smiles that win, the tints that glow but tell of days in goodness spent."



CLIFFORD PORTER

"Shanks."

Business Manager of "Scoop" (4)
 Business Manager of Yearbook (4)
 Class Treasurer (3)
 Athletic Association (3), (4)
 Basket Ball (4)
 Class Play (4)

VARENA GRAVES

"Tude."

Reporter of Sphinx (1)
 Class Play (4)

*"Quiet in class but powerful
 loud in grade."*

*"And the way that was
 deary becomes bright and
 and cheery,
 Illumined at once by the face
 of a friend."*

HAROLD NEFF

"Finny."

Athletic Association (1), (2), (3), (4)
 Basket Ball (2), (3), (4)
 President of Class (2), (3)
 Minstrel Show (2)
 Chairman of Assembly Committee (4)
 President of Athletic Association (4)

"He can write two compositions especially well; The Selling of Shoes and the Friendship of Gertrude."



GERTRUDE BLAKE



Athletic Association (2), (3)
 Chorus (1)
 President of Booster Club (3)
 Booster Club (4)
 Athletic Board of Control (3)
 Secretary of Board of Control (4)
 Social Edition of "Scoop" (3)
 Editor in Chief of Yearbook (4)



*"She is a Booster, spelled
 with a big B."*

HAROLD DODSON

"Doddie."



Glee Club (2)
 Chorus (3), (4)
 Basket Ball (3), (4)
 Foot Ball (3), (4)
 President of Class (3)
 Vice President of Athletic Association (3)
 Class Play (4)



*"He is an orator as Mark
 Antony was."*

RUTH SAGER



Booster Club (3), (4)
 Secretary of Class (2)
 Glee Club (3)
 Chorus (3), (4)
 Operetta (3)
 Annual Staff (3)
 Class Play (4)



*"She has excellent gifts,
 but her special one is talking."*





HARRIET ROSECRANS

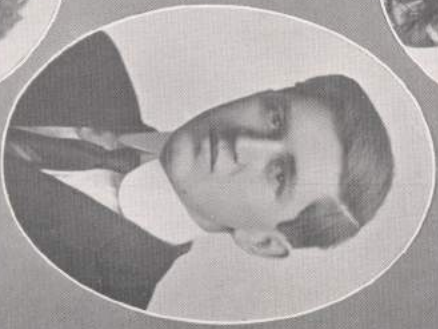


HAL CUNNINGHAM



*"Maid of the golden locks,
Dewy-eyed Seko!"*

*"Lean, long and lanky,
Never angry nor cranky."*



HEATHER LANNING

"Sweedie,"



Glee Club (1), (2)
Chorus (1), (2), (3)



*"Thou art a prodigal of
smiles,
Smiles sweeter than frowns
are stern."*



CLARA SMITH



Booster Club (3)
Chorus (1), (3), (4)



*"A mind at peace with all
below
A heart whose love is im-
mortal."*

HAROLD BIESTER

"Hank."



Football (3), (4)
Chorus (1), (3), (4)
Athletic Association (2), (3)
Boys' Glee Club (4)
Class Play (4)



*"You will know him by his
broad grin."*

LOTTIE SCHNITCKE



Chorus (3)
Booster Club (4)



*"She speaks, behaves, and
acts just as she ought."*





MILDRED BAXTER



Librarian of Glee Club (2)
 Booster Club (3), (4)
 Secretary of Literary Society (4)
 Chairman of Social Committee (3)
 Social Editor of "Scoop" (4)
 Social Editor of Yearbook (4)



"Hail, social life!"

Athletic Association (1), (2), (3), (4)
 Chorus (1), (2), (3), (4)
 Glee Club (2), (3)
 Minstrel Show (2)
 Class Play (4)



LYLE GILLETTE
"Jelly."



*"My favorite pastime is—
 eating."*



NEVA DIFORD



Booster Club (3), (4)
 Chorus (1), (2)
 Literary Society (4)



*"Witty to talk with, pretty
 to walk with."*



BEATRICE RICHARDSON

"Be."



- Chorus (2), (3), (4)
- Athletic Association (4)
- Booster Club (3), (4)



"Mirth is scattered through
her quiet ways."

STANLEY KIESTER

"Stan."



- Foot Ball (4)
- Class Play (4)



"I prefer to be classed with
the bachelors."

MARJORIE PILON

"Midge."



- Glee Club (1), (2), (3)
- Secretary of Literary Society (2)
- Glee Club Operetta (2)
- Booster Club (3)
- Glee Club Pianist (3)



"You shall not take her
without her answer unless you
take her without her tongue."





FLORINNE CRAWFORD



Booster Club (4)
Literary Society (4)



*"Some honor I would have
Not for great deeds, but
good alone."*



GENEVIEVE FAIR

"Squeaky."



Glee Club (2), (3), (4)
Literary Society (2), (4)
Booster Club (3), (4)
Chorus (1), (2), (3)
Glee Club Operetta (2)



*"—divinely tall,
And most divinely fair."*



RALPH PORTER

"Runt."



Minstrel Show (2)
Athletic Association (4)
Class Play (4)



*"Short in stature, but lengthy
in speech."*

IRENE ARDES
"Bobbie."



Athletic Association (1), (2), (3), (4)
 Literary Society (2), (4)
 Booster Club (3)
 Secretary of Booster Club (4)
 Glee Club Operetta (2)
 Glee Club (1), (2)
 Class Play (4)



*"Take gladness at its fullest
 worth
 And make each hour an hour
 of mirth."*

JOHN CASEY
"Irish."



Athletic Association (1), (2), (3), (4)
 Chorus (1), (2), (3), (4)
 Glee Club (2), (3)
 Minstrel Show (2)
 Class Play (4)



*"He is in the roll of short
 men."*

ELVIRA BAHR



Vice President of Class (2), (3)
 Literary Society (2), (4)
 Booster Club (4)
 Secretary of Booster Club (3)
 Glee Club (1), (2)
 Glee Club Operetta (2)
 Associate Editor of "Scoop" (3)



*"Quietly she works on her
 way to success."*





CHARLOTTE LAMPERT

Glee Club Operetta (2)
Glee Club (1), (2)
Chorus (1), (2), (3)

*"Many are those who attend
Vanity Fair."*

ELDONNE MANNING

Athletic Association (4)
Class Play (4)

"Still waters run deep."



GRACE MEEHAN

Glee Club Operetta (2)
Glee Club (1), (2), (3)
Booster Club (3)
Chorus (1), (2), (3)
Class Play (4)

*"Depart from me, care and
worry."*



MAUDE FLEMING
Maudie."



Booster Club (3)
Literary Society (3)
Chorus (4)
Class Play (4)



"I know her by her happy
air
Her bright brown eyes, her
dark brown hair."

RAYMOND WILLARD
"Huggie."



Football (4)



"My special fruit is dates."

LILLIE AVES



Chorus (1)
Booster Club (3), (4)



"Kind hearts are more than
coronets."



VALETA SEVERNS

"Tiny"



Booster Club (3), (4)
 Secretary of Class (3)
 Reporter of "Scoop" (2)
 Glee Club (3)
 Glee Club Operetta (2)
 Chorus (4)
 Class Play (4)



*"I couldn't be good, if I
 would,
 And I wouldn't be good if I
 could."*

BAILEY PORTER

"Rab."



Minstrel Show (2)
 Football (4)
 Class Play (4)



*"He rests at ease and does
 contend himself so."*



MATTIE WOLLENBERG



Chorus (3), (4)
 Booster Club (3), (4)
 Literary Society (4)



*"Fairytale, I love to write
 To while the hours of the
 night."*



JOSEPHINE MADIGAN

"Jo."



Booster Club (3)
Literary Club (2), (4)
Athletic Association (1), (3)
Glee Club Operetta (2)
Camera Club (1)



*"Her hair is a crown of
glory."*

DONALD SLATER

"Don."



Minstrel Show (1)
Class Play (2)
Athletic Association (2), (3), (4)
Camera Club (3)
Class Play (4)



"He loves best to be alone."

RUTH ADAMS



Booster Club (3), (4)
Literary Society (4)



"Art wins the heart."



GRACE KIESTER

"Shorty."



Glee Club (1), (2)
Chorus (1), (2), (3), (4)
Treasurer of Booster Club (3)
President of Booster Club (4)
Literary Society (4)
Glee Club Operetta (2)
Class Play (4)



"She has decided likes and dislikes."

RAY SLATER

"Swanson."



Basket Ball (1), (2), (3), (4)
Captain of Basket Ball Team (3)
Champion of Tennis Tournament (3)
Baseball (1)
Vice President of Class (1)
Treasurer of class (2)
Athletic Editor of "Scoop" (3)
Secretary of Athletic Association (3)
Class Play (4)



"We wonder why he is so fond of Banks."

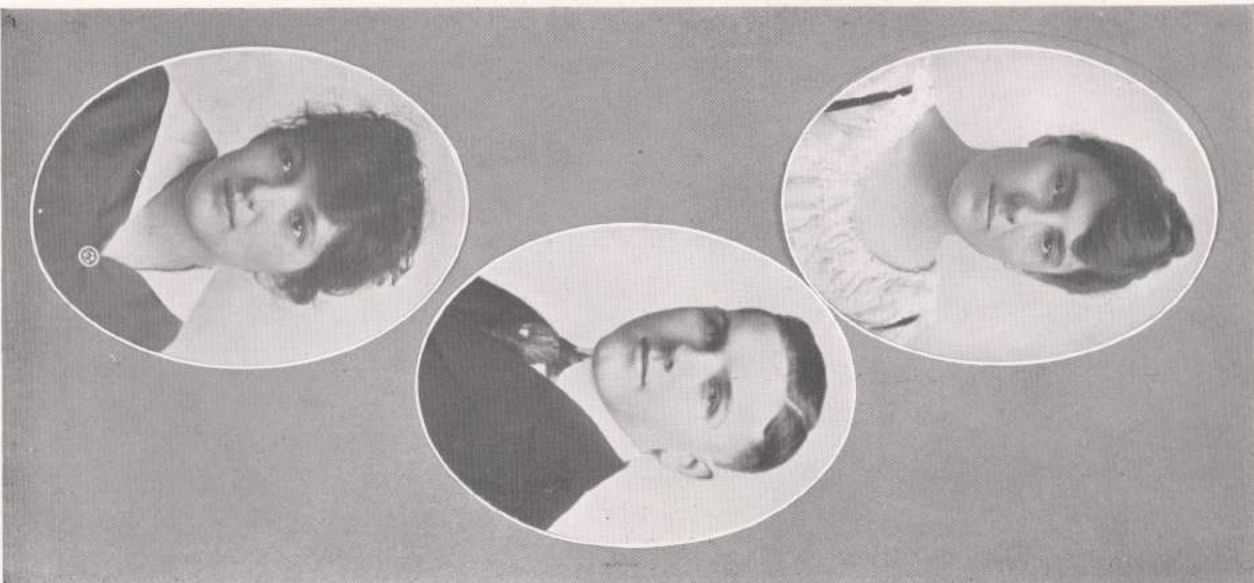
MILDRED COONRAD



Glee Club (1), (2)
Chorus (2), (3)
Booster Club (3), (4)



"Quiet and demure as Priscilla."



GENEVIEVE PITZINGER

Glee Club (1), (2), (3), (4)
Chorus (1), (2), (3), (4)
Literary Society (4)
Booster Club (3), (4)
Camera Club (3)
High School Pianist (4)
High School Orchestra (4)

*"Music makes the heart
grow light."*

WALTER DALLAS

"Walt."

Class Play (4)

"A good actor is he."

HELEN GALLAGHER

Booster Club (3), (4)
Literary Society (4)

*"Success! It is won by
patient endeavor,
Energy's fire and the flame
glow of will."*



HAZEL PRATT

"Peg."



Chorus (1), (2), (3), (4)
Glee Club (1), (2), (3)
Booster Club (3), (4)
Class Mantle (3)
Glee Club Operetta (2)
Athletic Association (2), (3)
Breaking of Ground (4)
Literary Society (2), (4)
Librarian (3), (4)
Class Play (4)

RUTH MIDKIRK



Operetta Chorus (2)



"Genius of Silence."



"Let us now be up and doing with a heart for any fate."



IRENE POWERS



Literary Society (2)
Glee Club (3)
Booster Club (3)
Round Table Debating Club
Class Play (4)



"In some people silence is golden."

Class Week

Faculty Reception	June 9
Baccalaureate Sermon	June 11
Class Day	June 12
Junior Banquet for Seniors	June 12
Commencement	June 13

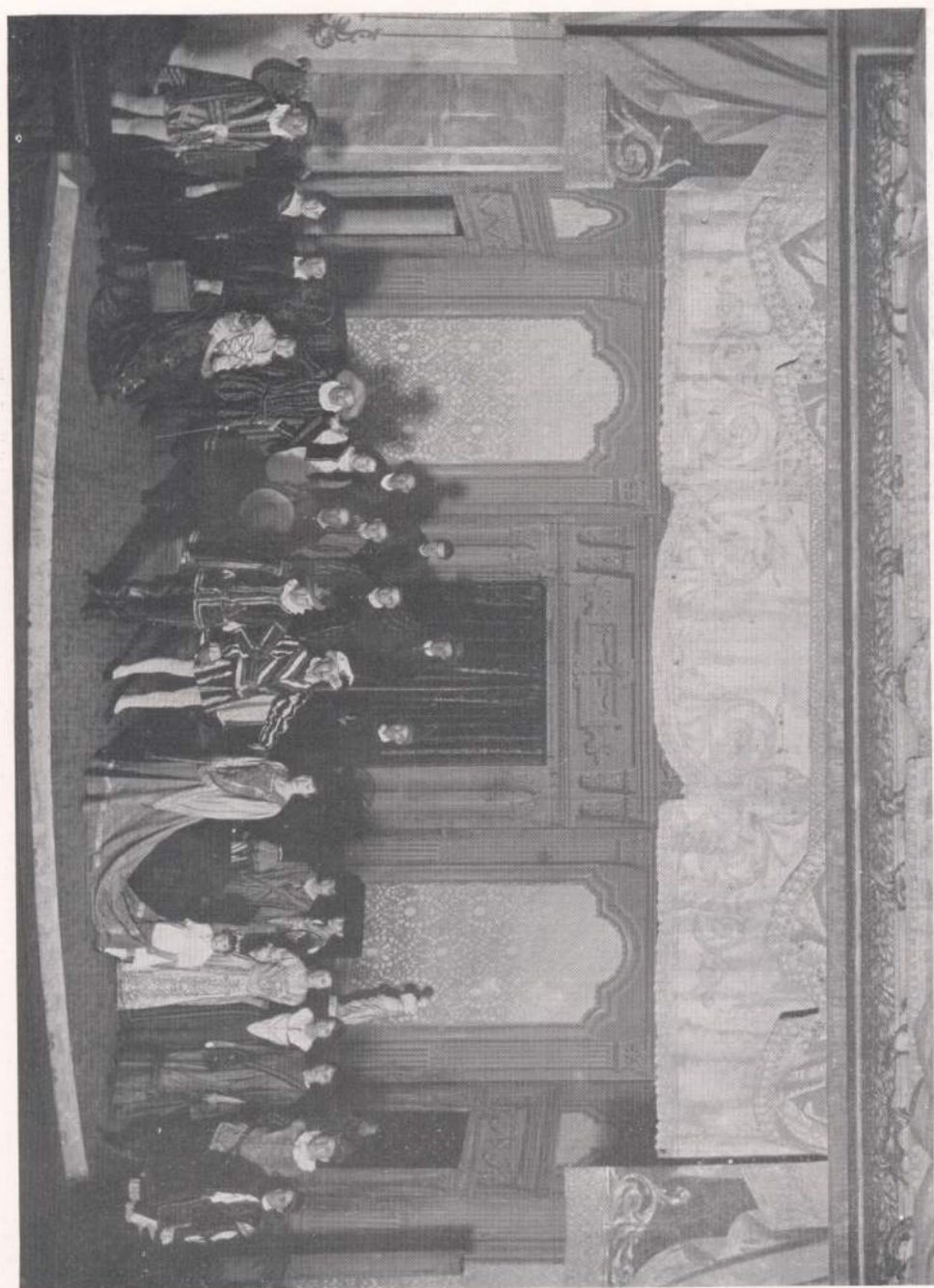


Class Honors

Valedictorian	Elvira Bahr
Class Poem	Helen Gallagher
Prophecy	Maude Fleming
Class Song	Quartet
Ruth Sager, Ray Slater, Heather Lanning,	
Harold Biester.	
Presentation of the Mantle	Hazel Pratt



Reply	Bertha Melzer
Class History	Varena Graves
Memorial	Clifford Porter
Last Will and Testament	Willard Cleaver
Presentation of Gifts—	
To the Boys	Alzora Adams
To the Girls	Harold Dodson



Senior Play

"The Honeymoon" by John Cobin

SETTING AND CAST OF "THE HONEYMOON"

DRAMATIS PERSONAE

Duke Aranza	Harold Dodson
Count Montalban	Gail Birkett
Rolando	Ray Slater
Balthazar	Bailey Porter
Jaques	Harold Biester
Lampedo	Willard Cleaver
Lopez	Clifford Porter
Campillo	John Casey
Servant to Balthazar	Donald Slater
Juliana	Ruth Sager
Volante	Hazel Pratt
Zamora	Grace Kiester
Hostess	Irene Powers
Wife of Lopez	Grace Meehan

Attendants.

Girls — Alzora Adams, Valeta Severns, Varena Graves, Irene Ardes, Maude Fleming, Elizabeth Sager.

Boys — Lyle Gillette, Walter Dallas, Eldonne Manning, Ralph Porter, Stanley Kiester.

Director — Miss Helen Hill of Oshkosh, Wisconsin.



Senior Play

The dictionary says that to succeed is to accomplish something attempted. If that be success, certainly the Senior Class Play was successful, and the Seniors are to be complimented. Our amateur actors played their parts exceptionally well, and "The Honey-moon," which is a difficult play to stage was given those artistic, skillful touches which made it delight and a pleasure to the audience. To Miss Hill, Coach, falls much of the credit due; for she labored patiently and carefully to obtain the desired effects, and she, indeed, proved herself to be an artist in the work.

The costuming was excellent. The gowns of the ladies as well as the costumes of the men gave a rich additional tone to the settings which in themselves were complete and effectual. The colors blended well together, and each costume seemed to give prominence to another.

But to the cast must be given the greatest portion of honor. Harold Dodson as Duke Aranza, indeed, acted quite princely. He seemed to be a veritable storyteller, at least to his wife, until we found out it was simply his cleverness. Altho we might not admire his method of tanning "his shrew," yet to him must be granted an aptness for dramatics.

His wife, the lovely Juliana, was quite haughty and ill-tempered. She was almost equally sharp with her tongue and, as I presume Lopez thinks, with her hands. Her ability finally to do her husband's bidding and to be happy even in a cottage shows her versatile nature. The part was unusually well played by Ruth Sager.

The Count and Volante were a very interesting

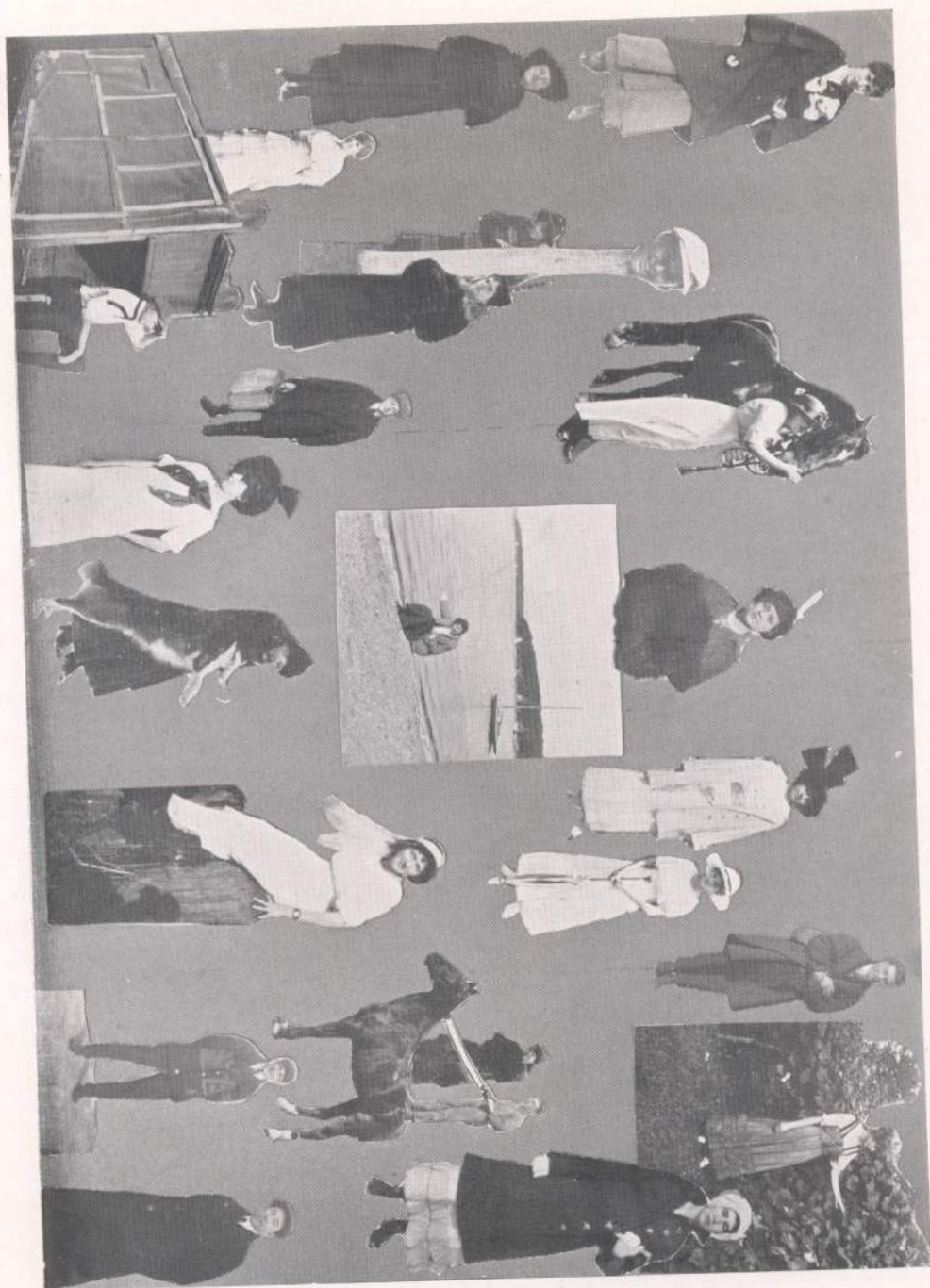
couple. The former certainly had a sense of humor, at least, so we might judge from his ability to laugh; but he wasn't quite clever enough for the mischievous Volante. Gail Birkett and Hazel Pratt both are deserving of much credit for their excellently rendered parts.

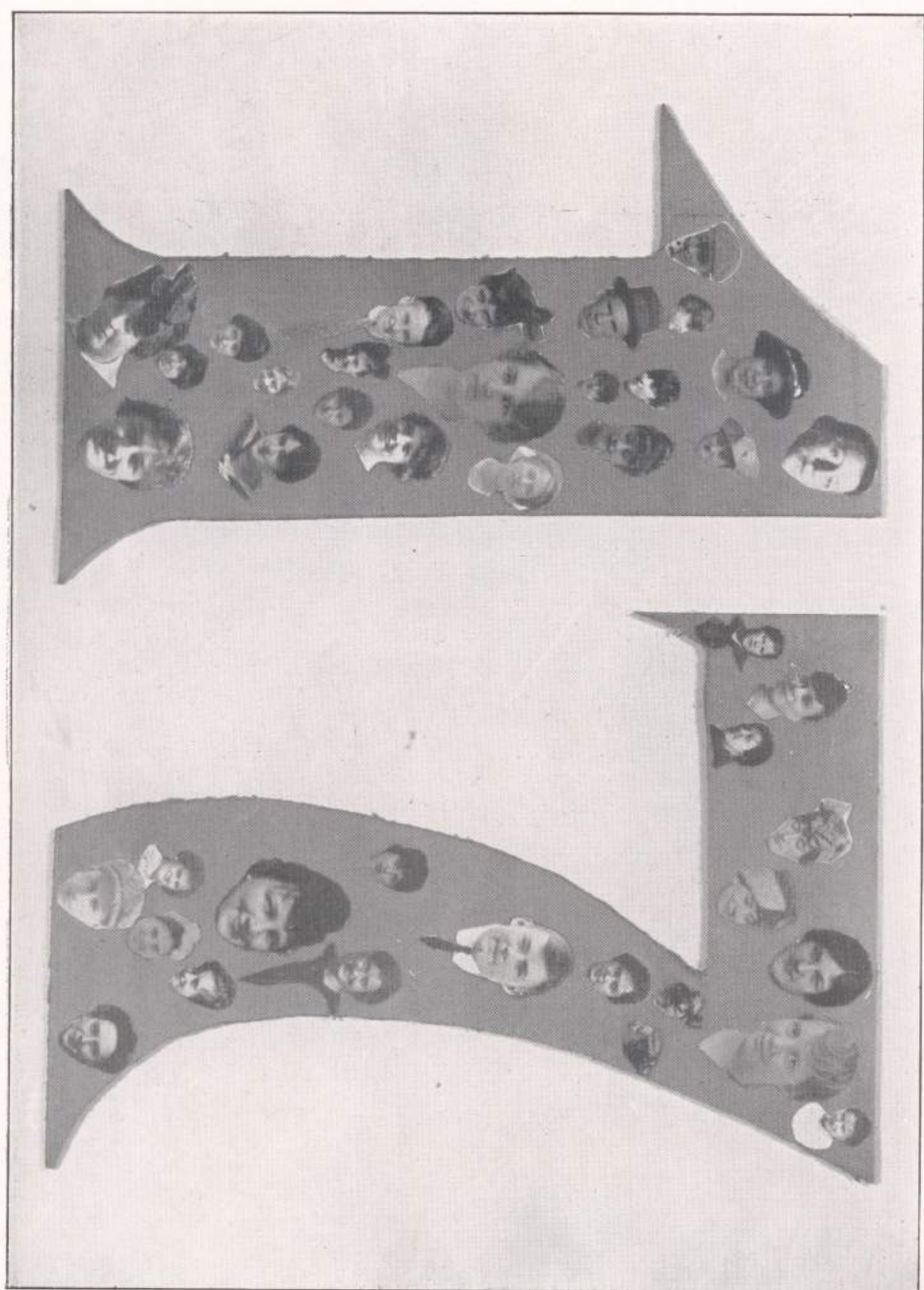
Ray Slater, the woman-hater, was even weak enough to be turned from his morbid ideas by the charming and lovable Zamora. However, he consoled himself by saying that she was one woman "fair without vanity and rich without pride." Grace Kiester, this lovely little lady, was equally as adept in disguise as a page as she was in court gowns.

The impersonated duke, Jacques, played cleverly by Harold Biester, was a most conceived person, as was readily perceived in his actions. While Juliana probably did not like his manner of dealing out justice, still he made a very tolerable duke.

The Hostess, Irene Powers, and Lampedo, Willard Cleaver, had contrived a very clever scheme; but were not quite smart enough for their victim, Balthazar, Bailey Porter. He certainly impersonates an anxious father to perfection, and did full justice to his part of the play. Buddy certainly displayed more nervousness than is usual, while Irene had a narrow escape with her life. There is no doubt that Buddy will never try fixing up pills again, for he is fully aware of the old saying, "He dug a ditch for his neighbor and fell into it himself." These were the most humorous parts of the play and were rendered with a fine finish.

The attendants and the little train-bearer added interest and color to the various parts so on the whole the Senior Play was a splendid success.





History of Class of 1917

The renowned class of '17 entered the portals of Belvidere High School in 1913, a body of ninety-one strong. Our banner was a little green flag, which floated feely in the breeze. At first its color was said to be the reflection of our faces. As time passed by, the flag grew and grew, gradually changing color, until it became a large blue and white banner, bearing the number '17.

To guide us in our quest of knowledge, we elected Boyd Watkins, James Conley and Grace Meyers. As the path was rough and rocky, we had little time for gaiety, and only one party relieved the humdrum life.

The next year a new force of leaders was chosen. Marian Davis acted as president, Bertha Melzer as vice president and Lillian Biester as secretary and treasurer. By that time we felt that we had the wisdom of Socrates. We were Sophomores! We became more frivolous than in the previous year and two social events took place; one, a dance

ing party, the other, a sleigh ride. It was a successful year and passed quickly by.

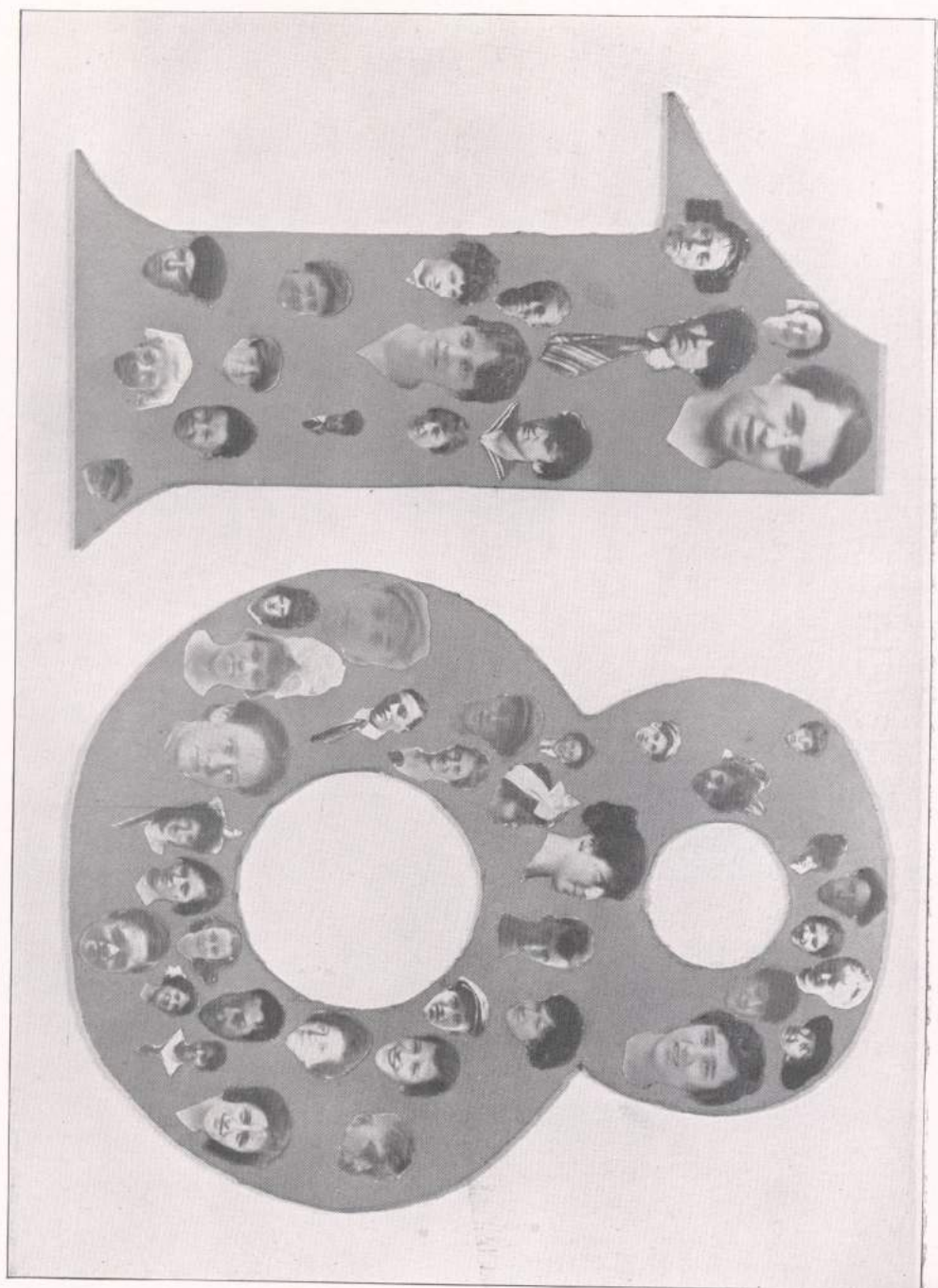
The next year, our body of ninety-one had diminished to forty-seven. Our officers were Wilma Porter, Keith Marcellus, Philip Norton and Gertrude Porter. We had one party with our respected elders, the Seniors, at which all had a jolly time. We, always observant of our wiser upper classmen, are becoming more like them as time goes by. We are now as modest and unassuming as they. One will notice that we have all the characteristics of the little wood-violet, although in the midst of our ranks there are several basket ball and football stars, orators, artists and poets, who, for their famous work will be long remembered by others than the members of the class of '17.

GERTRUDE PORTER,
Secretary.

CLASS ENROLLMENT—JUNIORS

Allen, Joy	Dallas, Carl
Ames, Charles	Davis, Marian
Andrews, Esther	Davis, Ruth
Atwood, Vernice	Garvey, Charlotte
Bender, George	Gay, Grace
Biester, Charlotte	Gilbertson, Arthur
Biester, Lillian	Glass, Vernia
Brady, John	Hall, Helen
Burns, Elizabeth	Havenor, Ruth
Catchpool, Gladys	Jones, Dorothy
Conley, James	Jury, Boyd
Curran, George	Lamb, Mary

Lear, Ben	Porter, Wilma
Lobdell, Gladys	Shane, Margaret
Lobdell, Luceba	Schwarz, Edwin
Marcellus, Kieth	Schwebke, Louise
McCarthy, Genevieve	Spaulding, Katherine
Melzer, Bertha	Stearns, Ada
Meyers, Grace	Stearns, Ruby
Moore, Susie	Stone, Elizabeth
Norton, Phil	Valentine, Harry
O'Connor, Vincent	Voorhis, Beatrice
Plane, Daisy	Webster, Esther
Porter, Gertrude	



History of Class of 1918

A band of some one hundred strong enlisted in the Freshmen ranks of B. H. S. in 1914, organizing under the leadership of Floyd Benson, captain; Hazel Blake, first lieutenant; George Sisson, second lieutenant and Miss Cheewing, counselor. Throughout the year's encampment along the border of learning this diligent body drilled constantly under various superior leaders.

Across the border of learning lies the steep and rocky land of knowledge, into this almost the entire troop of educational soldiers eagerly journeyed at the end of the year. They halted before the Sophomore fortification and appointed Willard Jukes as colonel and advanced George Sisson to the office of first lieutenant. The work of second lieutenant was given to Herman Whitman and Lucile Graves became adjutant. With newly concentrated forces a successful encounter was made against the Sophomore barricades.

Miss Wagner as major, aided by the colonel and other officers, arranged an evening's armistice and led the enthusiastic regiment into a

quiet valley, near the adjutant's home, where surrounding a blazing camp fire they heartily indulged in hot rations.

Following their return to duty, the troopers were reinforced, near the end of the ensuing skirmish, by a scouting party of twenty-seven mid-years. Thus aided the group of one hundred and thirteen members strove on encountering difficult tasks, but ever hopeful and oftentimes successful. While off duty on another evening, baskets of palatable delicacies were consumed with much merriment and later plans were laid for a surprise in which the lusty company might all partake.

Having won the four most difficult border passes (exams) the victorious army blithely marches on toward the next goal, Fort Junior, where they, having sacked the longed-for Sophomore talents, will renew with flying colors another of life's educational battles.

LUCILE GRAVES.

Secretary.

CLASS ENROLLMENT—SOPHOMORES

"A"			
Allen, Mildred	Durand, Stanley	London, Harold	Rompel, Victor
Anderson, Ivan	Dwyer, Cornelius	Looy, Bess	Seivens, Dorothy
Baker, Hazel	Fair, Lowell	Lucas, Wyla	Sexauer, Howard
Barney, Emma	Fane, Madelene	Luhman, Frank	Sisson, George
Best, Doris	Fifeid, Amy	Marth, Marie	Smith, Ila
Blackledge, Wallace	Fitzer, Ruth	Meyers, Mary	Stephenson, Annie
Blake, Hazel	Graves, Lucile	Midkirk, Lulu	Stoner, Nellie
Bogue, Mattie	Hall, Ralph	O'Brien, Edward	Subr, Carl
Bolman, Aline	Hammond, Edith	O'Connor, Florence	Sullivan, Bernard
Bowley, Eldon	Hueston, Gerald	Parrent, Irene	Swanson, Arthur
Bryan, Glen	Huddleston, Mary	Partridge, Helen	Swift, Helen
Burton, Pearl	Jardine, Helen	Panning, Anna	Taylor, Glen
Carlson, Ruben	Johnson, Roy	Perlett, Arthur	Thomas, Charles
Casey, Nettie	Jukes, Allen	Petty, Ruth	Tobue, Flora
Closson, John	Jukes, Willard	Phelps, Irene	Tynan, Mildred
Comstock, Herbert	Kizer, Harold	Pinegar, Amy	Van Epps, Clifford
Davis, Irwin	Lampert, Loretta	Porter, Dorothy	Van Epps, Glen
Durand, Louise	Leitzell, Katherine	Rasmussen, Florence	Walte, Guy
		Richardson, June	Walker, June

Walls, Richard	Fossler, Lillian	Woods, Pearl	McGabe, Dewey
Weaver, Mable	Gilroy, Harold		McGonigle, Irene
Weaver, Jessie	Holliday, Albert		McLain, Florence
Welch, Albert	Jacobs, Beulah		Poulton, Jessie
Wemple, Merritt	Keator, Helen		Rosenkrans, Marcy
Wenzel, Pearl	Larson, Mark		Sexauer, Esther
White, Gertrude	Lepper, Lillian		Slater, Grant
Whitman, Herman			Tripp, Donald
			Tobue, Anna
			Wells, Stanley

"B"



History of Class of 1919

"The Fathers"

Just who they are and how long eighty-three shall remain without rank or station in life is hard to determine. First they took pleasure in electing their officers. For their president they chose Alpha Barrett and O, my! such an election. Then Alice Porter was elected vice president and Ruth Helligas secretary. As a Freshman had not been allowed to show his power as an officer, Fording Fellows' name was written on the board with the word treasurer after it.

Finally the "Babes" had a class party and it was a blissful affair, for

if one played at games a little strenuously, it was excused, "He's only a Babe and there's time to learn." If one bumped his head he could cry, for a Babe always gets comforting words and tender carresses from his elders. And if one wished to act dignified, it was not especially hard, although he felt quite uncomfortable.

"Gee! It's great to be a Babe."

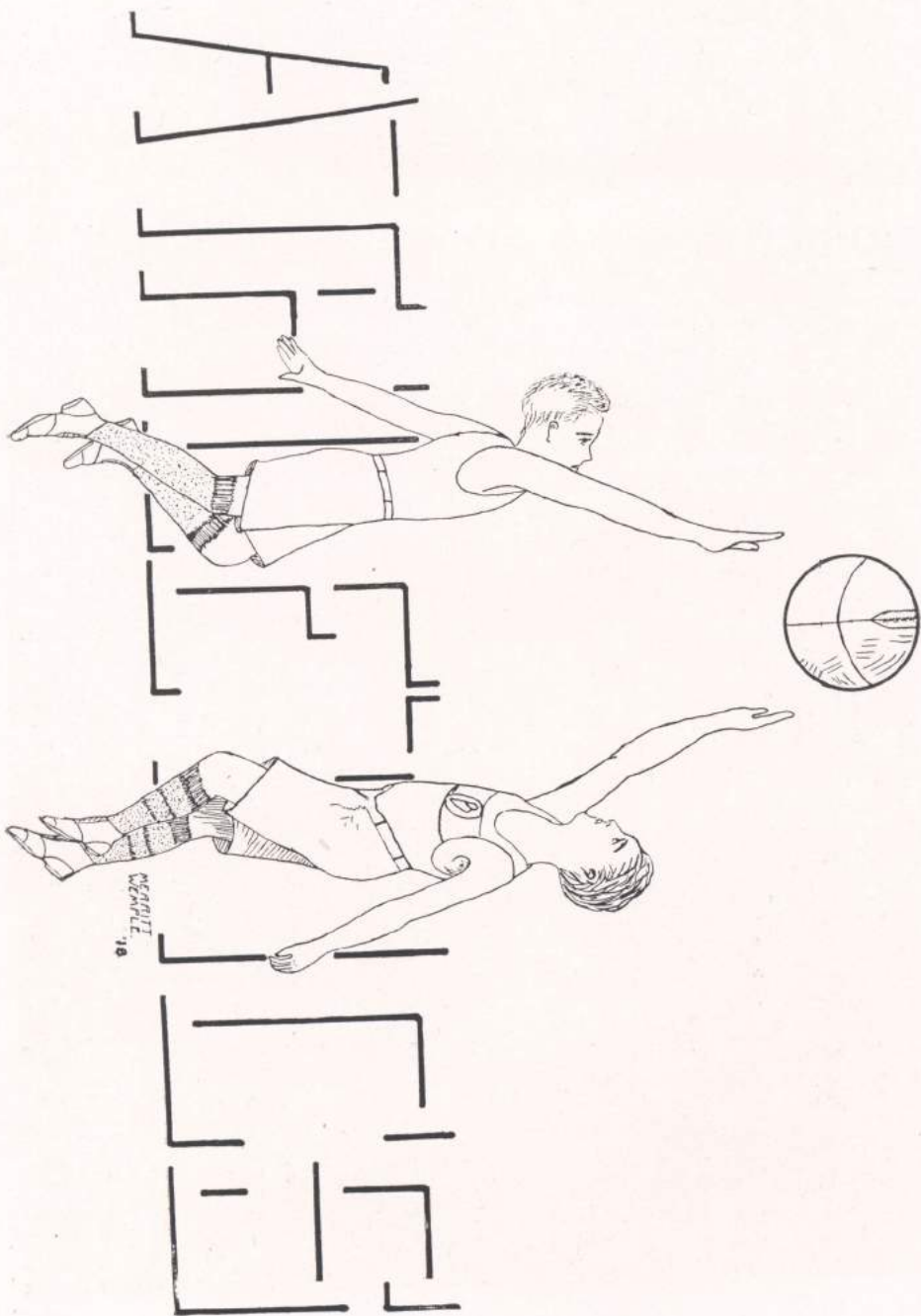
RUTH HELLIGAS,

Secretary.

CLASS ENROLLMENT—FRESHMAN

Barrett, Alpha	Harmon, Eleanor	Petty, Alice	"B"	Leat, William
Bishop, Edith	Helligas, Ruth	Phelps, Bernice	Alber, Russell	Lewis, Carmen
Blackledge, Clair	Keating, Eileen	Phelps, Earl	Alderman, Geraldine	Lyall, Alexander
Bogardus, Hubert	Krans, Eunice	Porter, Alice	Anderson, Hilda	McConnell, Gabriel
Bryan, Hazel	Lanning, June	Purcell, Marie	Beach, Lois	McLain, Boyd
Burlingame, Bernice	Landon, Irma	Ralston, Lawrence	Bennett, Russell	Melzer, Evelyn
Carlson, Alice	Lauger, Edna	Rislow, Hazel	Blackledge, Viola	Midkirk, Jewell
Champlain, Doris	Lobdell, Nelva	Schwebke, Margaret	Bleakley, Orin	Miller, Lydia
Chena, Fern	Mattson, Albert	Schult, Fred	Burton, Violet	Orr, Zina
Dorn, Clara	Mayberry, Fern	Slatery, Helen	Busse, Louis	Otto, Frank
Fellows, Fording	McKeown, Miles	Steuert, Irving	Carlson, Mildred	Petty, Joe
Freedburg, Clifford	McKeown, Mae	Tabor, Lucille	Eichler, Sidney	Raymond, Dorothy
Fredrickson, Ninabel	Meehan, Hazel	Tanner, Jesse	Gilman, Alfred	Rubeck, Arthur
Frye, Howard	Menne, Ethel	Wheeler, Ethel	Hammond, Viola	Scott, Mabel
Gahlbeck, Melvin	Meyers, Maybelle	Wheeler, Marie	Hannan, Verna	Sullivan, Myron
Greenburg, Louis	Nash, Russell	Yates, Harold	King, Elsie	Sullivan, David
Hanson, Wilbur	O'Connor, Mae	Powers, Bessie	Kronke, Francis	Swanson, Russell
				Tefft, Theora





A Season of Success

The athletics of the high school were again governed by a board of control. But this year, instead of having a member of the faculty as president of this board, a member from the student body, Willard Cleaver, was selected by the students to be in charge of affairs. Besides the president, two pupils from each class were chosen as members, and were advised by a member of the faculty, Mr. Noll. This committee had charge of everything in the athletic line in the school.

Another improvement was the organization of cheer leaders. This work was handled by Claude and Clair Carney. The students had the west side of the hall reserved for every game and they kept the spirit of the players up by their incessant rooting. The cheer leaders were always attired in clown suits of purple and gold, with a high school pennant hanging from

their necks. These outfits made quite a hit with the rooters at the out of town games. A great deal of credit is due to the Carney brothers for the manner in which they conducted their cheers the whole season.

Our second team is also worthy of some praise for their consistent work during the season. They played a schedule of seven games and were victorious on four occasions. Twice they were defeated by Freeport, and once by Rockford after an overtime battle. The first team learned to value these men as they were a help to them in the Rockford and Beloit tournaments, beside the times different men were sent in to relieve them in easy games. The men who played on the second team are Dodson (captain), Porter, Wells, McCabe, O'Connor and Welch.





From left to right, top row—Kiestler, Comstock, Lear Valentine, Bies-
ter, Dodson, Birkett, Thomas, B. Porter, C. Porter, A. Jukes, W. Jukes,
Coach Noll.

Second row—Rompel, Sexauer, C. Van Epps, Davis, G. Van Epps,
Bottom row—White, R. Bender, Jury, Wells, Sauers.



Review of Football Season

At the beginning of the 1915 football season, the outlook was anything but encouraging. Two of the best men had been lost through ineligibility, and several others through graduation. Nevertheless, Coach Noll took charge of the squad and endeavored to select green men to fill these vacancies, and before the playing schedule had been completed he had a fair team representing Belvidere High School.

Of the seven games scheduled only two resulted in defeats. The initial beating was administered by Woodstock, the only team who succeeded in holding us scoreless. Freeport's size and weight proved to be

too large an obstacle for Belvidere to overcome, but it was only after a hard battle that we were forced to bow to defeat.

During the season we scored a total of 590 points to our opponents 123. Although this result was boosted by the Marengo game, in which 139 of our points were registered.

Five members of the team will be lost through graduation. We are trusting that a larger number of men will report next fall than did last fall, but under the leadership of Harry Valentine, a successful season can be expected.

Result of Games

Elgin Academy at Belvidere	6	Belvidere	12
Harvard at Harvard	0	Belvidere	28
Woodstock at Woodstock	34	Belvidere	0
Harvard at Belvidere	6	Belvidere	52
Marengo at Belvidere	0	Belvidere	139
Freeport at Belvidere	52	Belvidere	14
Rochelle at Belvidere	25	Belvidere	45

The Line-Up

R. E.	A. Jukes, White
R. T.	W. Jukes, Biester
R. G.	Thomas, Davis, Rompel
C.	Jury
L. G.	Porter, Saners
L. T.	Comstock
L. E.	Valentine, Wells
R. H. B.	Birkett
F. B.	Valentine, Dodson
L. H. B.	Lear
Q. B.	White, Wells



First row, reading from left to right: Coach Noll, G. Fox, A. Comstock, R. Slater, H. Neff, C. Porter, D. Richardson.
Second row: H. Dodson, D. McCabe, B. Lear.
Third row: A. Welch, V. O'Connor, W. Cleaver (captain), S. Wells, H. Gilroy.



Review of Basket Ball

The Belvidere High School basket ball team has enjoyed another successful season. They played a clean, steady game throughout the season and won the distinction of being the fastest team of the district.

The season was opened with a victory from the fast Englewood High School team. This victory was followed by others, at the expense of Dixon, De Kalb and West Aurora. There was a little consolation in defeating West Aurora, the team who put us out of the tournament last year. But then the tournament hopes of Belvidere received quite a set back. We were defeated twice by the state champions, Freeport; and by our ancient rivals, Rockford. Before we could re-

cover from this slump we met Joliet and were defeated, but as an appropriate ending of the season, Huntley and Byron were played and defeated.

The end of this season marks the passing of four old players, Slater, Fox, Cleaver and Neff. For four years these men have played on the team and striven to give it the reputation that it now possesses. Although next year's team will be without the services of these four veterans, with such men as Lear, Gilroy and Comstock remaining to form the nucleus of this team, there is no reason for not having a first class team.

Result of Games

Englewood at Belvidere	19	Belvidere	27
Dixon at Belvidere	17	Belvidere	42
DeKalb at DeKalb	15	Belvidere	38
West Aurora at Belvidere	21	Belvidere	46
Freeport at Belvidere	40	Belvidere	23
Huntley at Huntley	26	Belvidere	28
Joliet at Joliet	29	Belvidere	26
Rockford at Rockford	36	Belvidere	18
Freeport at Freeport	25	Belvidere	14
Byron at Belvidere	14	Belvidere	60

The Players

BUD CLEAVER, captain and guard, has played his last game in the colors of the purple and gold. His past, snappy playing will be greatly missed next year. He played his best games at the Freeport tournament.

RAY SLATER is another player who will be missing from the ranks next year. Ray played a star game all through the season and was chosen as an all star forward at the Beloit tournament.

HAROLD NEFF, the veteran center, also closed his career as a high school basket ball player. He has filled the position of center for three years and his absence will be felt.

GEORGE FOX, the last of the old machine, will not return to school next year. George played an ag-

gressive game all season. He starred especially in the West Aurora game and at the Freeport tournament.

BEN LEAR will report for duty again next year. His best game was the Dixon game, when he scored seven field goals, although he was playing guard. His guarding won him the position of all star guard at Beloit.

HERB COMSTOCK, the husky center, played his first year as a first team man. His playing against Langenstine at the tournament won him much praise.

HAROLD GILROY is one of the best shadow guards that we ever had. His best feat was holding Mulnix scoreless at the tournament. Gilroy will be back next year.



Tournament

Again we failed to gain that coveted honor of champion of the district of northern Illinois. But at any rate, we were classed as being about the fastest team participating in the contest.

Previous years we were accustomed to reach the semi-finals before being eliminated, but this year a hard schedule prevented us from reaching that climax.

Our first game was with Huntley, who was easily eliminated by the score of 46-17. The next barrier to surpass was Mt. Carroll. By defeating that team 56-18 we moved up one step closer to the finals. Our third and last game was played with Freeport. It might be taken from the score 25-15, that Belvidere was easily beaten. But such was not the case, because in beating Belvidere, Freeport were forced to extend themselves so much that they were unable to cope with Rockford in the finals. The final result of the game was in doubt until the last few minutes of the game. Then Freeport by leaps and bounds drew in the lead and finished the game victors.

The real surprise of the tournament occurred in the Freeport-Rockford game, when Rockford came forth from the game victorious. The score was 26-23. Freeport attributed its defeat to the grueling contest with Belvidere.

The Beloit Tournament

At last, Belvidere High School realized an ambition that it has been striving to gain for a number of years, that is,—to win a tournament.

The team easily proved itself to be superior to the other teams entered in the tournament and experienced little difficulty in returning home with first honors.

Belvidere drew Freeport for its opening game, but as that team did not appear, the game was forfeited to Belvidere 2-0. The team started its second contest with Woodstock for opponents. Second team men were used in the first half and the score was fairly even. In the second half, Belvidere's team was shifted and with this combination, Woodstock was held scoreless, while Belvidere ran the score up to nineteen. The final result of the game was 19-9 in favor of Belvidere. As Beloit had been defeated by Baraboo, 9-6, in the semi-finals, the latter team was left to contend with Belvidere for the title.

Baraboo easily outweighed the purple and gold five, but what the R. H. S. squad lacked in size, they made up in speed.

They outplayed Baraboo in both halves, and had the team guessing in trying to check their fast team work and speedy playing. Belvidere gained the lead in the early part of the game and although the margin was close, they never lost their lead and finished the game as winners by the score of 25-15, and are champions of the Interscholastic Basket Ball Tournament.

Athletics: Class and Inter-Class

Football—

The first game of the inter class football series was staged between the Seniors and the Freshmen. Although the Freshies fought their hardest, they were no match for the heavier and more experienced Seniors. The score of this game was 52-0. The second game between the Juniors and Sophs proved to be the most interesting game of the series and it was only after a hard fight that the Juniors came forth from the contest the victors by a score of 26-12. Lear, Valentine and Bender were the stars on the Junior team, while Comstock, Jukes and Thomas were the mainstays for the Sophs.

The Seniors pulled the surprise of the tournament in winning easily 25-6 from the Juniors in the final game. It is true that they had the advantage of the Juniors by enjoying a day's rest, while the lower class men were forced to battle two days straight; but the deciding factor for the Seniors was the strength of their line.

It was composed of heavier men than that of the Juniors and very little trouble was had in breaking through their line and breaking up plays and tackling the runners before they had passed the line of scrimmage. The Juniors scored their lone touchdown from a long run by Bender in the second half. After this they were not able to pierce the line of the Seniors, and the final whistle blew with the Seniors leading 25-6.

Basket Ball—

The first game of the interclass basket ball tournament was played between the Sophomores and Freshmen. The Freshies were no match for their upper class men and were defeated by the score of 58-26. The second game of the series, between the Juniors and Seniors, was not much more interesting than the first. The Seniors easily outplayed the Juniors and won handily by the score of 55-22. Slater played the best game for the Seniors, while Lear easily outplayed his other team mates.

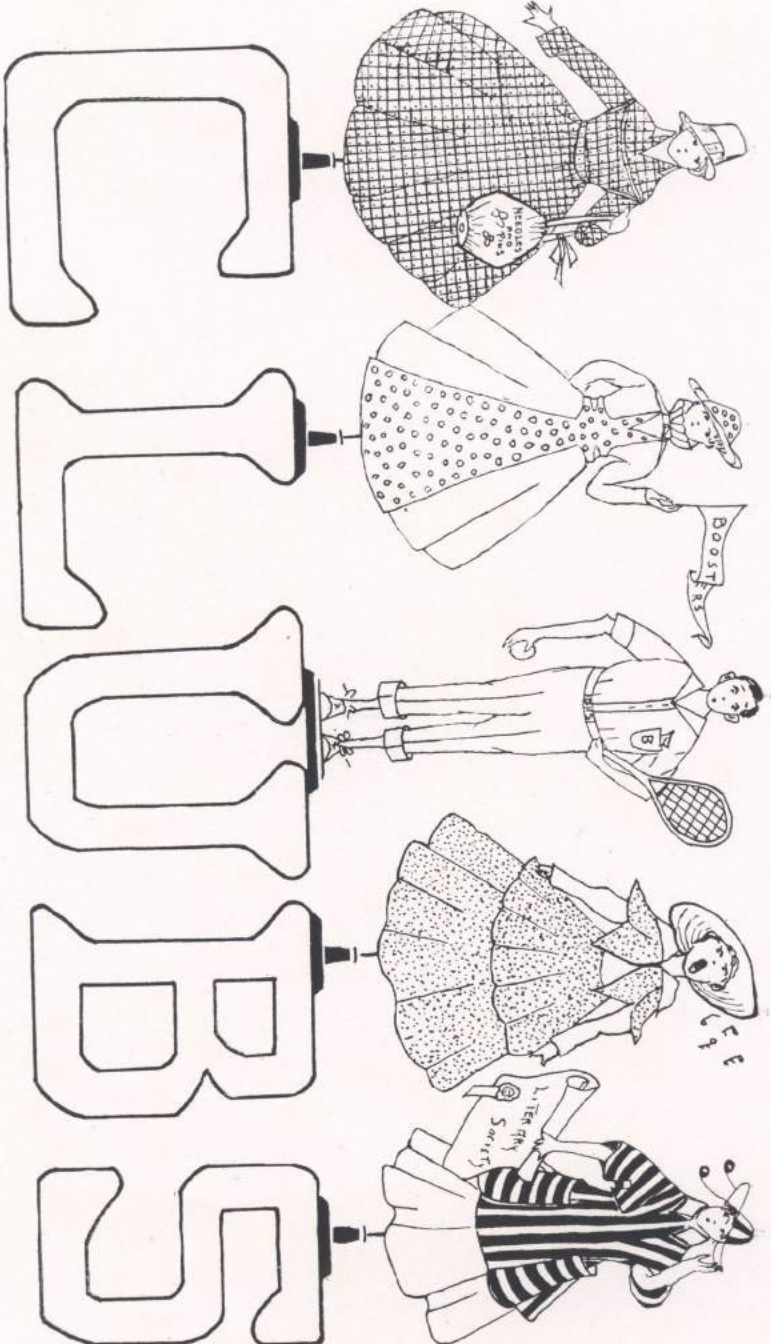
The Juniors were only able to beat the Freshies after a hard battle in the preliminary game to the Senior-Sophomore contest. The Juniors held a safe enough lead in the first half, but the Freshmen came back in the second half and nearly evened up the score. The final score was 33-30. In the final game played between the Sophs and Seniors, one of the most interesting contests of the season was played. The first half ended in a tie 11-11, and the score was tied on eight different occasions. Neither team led the other by more than three points at any time, and it wasn't until the very last of the game that the Sophs gained the advantage and won. Slater and Dodson were put out of the game, with four personal fouls, and with nine minutes to play. The Sophs easily won the game, 36-23 from the handicapped Seniors.

Track—

Although Belvidere High School was not represented by a track team the whole season, four men were chosen and sent to Northwestern University to compete in the indoor interscholastic track meet held at the gymnasium. The four men, Cleaver, Comstock, W. Jukes and Marcellus entered with but a week's training, and with so little time to prepare made a creditable showing. Marcellus, Jukes and Cleaver took part in the sixty-yard dashes, while Comstock was entered in the mile run.

None of the four runners were able to finish as victors, but Comstock and Marcellus came close to doing so. Comstock crossed the tape third, but had been disqualified earlier in the race for blocking, so his record was thrown out. Marcellus was forced to run twice, as his first race resulted in a tie. But he was not able to do as well the second time and lost out. Cleaver and Jukes were unable to better the other two men's showings.

As none of the classes took up track work, this meet consisted of all the track athletics indulged in, during the season.



EDNA • LAUGER



GLEE CLUB



"The Girls' Booster Club 1915-16"

The officers of the Girls' Booster Club are: Grace Kiester, president; June Richardson, vice president; Irene Ardes, secretary; and Alzora Adams, treasurer. Miss Harvey still retains her office as faculty adviser, while Hazel Pratt is still our cheer leader and is assisted by Ruth Petty.

During the season of Athletic feats the Booster Club rooted and boosted with all its might. The club was the cause of securing too trucks for the out-of-town games; these proved to be a grand success.

The Booster Club sold tickets for the Special Train Benefit, also for the Beloit Glee and Mandolin Club's concert, which the Alumni gave to aid in sending the boys to the tournament at Rockford. We sold \$54.50 worth of tickets, thereby realizing a gain of \$35.00.

The gifts of the club were an attachment for the Edison and a large picture of "Aurora."

The club helped make "Open House" a success, es-

pecially the following committees. Those of the reception and guiding committee were: Grace Kiester, Hazel Pratt, Ruth Petty and Irene Ardes.

The pie booth was taken care of by Alzora J. Adams, Ruth Sager, Valeta Severns and Florinne Crawford.

June Richardson and her willing helpers, Genevieve McCarthy, Hazel Blake, Margaret Shane and Edith Bishop looked after the candy booth.

The art booth was managed by Gertrude Blake, Ruth Adams, Elvira Bahr and Lillie Aves.

All said that May 19 was a day long to be remembered by the patrons and by the pupils.

Our history for this year is finished, but we hope that this club will bloom anew when it is transplanted into the new Belvidere High School.

IRENE ARDES,
Secretary.





"The Beta Literary Society"

Among the prominent activities of this year is the Beta Literary Society, which was organized September 28. At this time the following officers were elected:

President -----	Charlotte Garvey
Vice President -----	Luceba Lobdell
Secretary -----	Mildred Baxter

Some time later a fitting constitution was adopted and the society had a membership of fifty strong.

The real purpose of the society was to promote the idea "know thyself." In order to fulfill this requirement many unique programs have been given. Among them were our favorite poem, short story, picture, historical character, music and its composer and still other innumerable literary tastes.

As an appropriate motto the Betas chose, "Live not to thyself alone." This idea was also carried out in every possible way.

The only requirement of the society was to read one book each semester and give a book review on it.

Every girl in the high school had an opportunity

to become a member and to enjoy its social and literary works. Gold and white were the preferred colors and these were used in decorating for all occasions.

Among the social events given by the "Betas" are the reception given to the faculty, which proved to be a success from every standpoint; the Christmas celebration, at which a Christmas tree was adorned with presents for all, and also many fudge spreads. Besides these the society was favored with a talk by Dr. Annie Alquire on "This above all to thine ownself be true and it shall follow as the night the day, thou canst not then be false to any man."

The girls are now making future plans concerning a Shakespearean meeting and also a Japanese tea garden which is to be on display for Open House week.

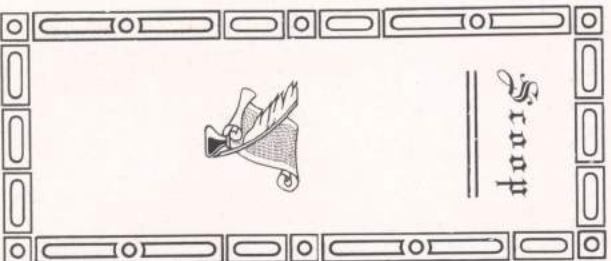
The "Betas" have enjoyed their year's work and are looking forward to one next year.

As a society we wish them success.

MILDRED BAXTER,

Secretary.





EDITORIAL STAFF

Editor in Chief -----Gail Birkett

EDITORS.

Associate -----Marian Davis
 Athletic -----Earl White
 Social -----Mildred Baxter
 Exchange -----Bertha Melzer
 Local -----Charlotte Garvey

BUSINESS STAFF.

Business and Circulation Manager ---Clifford Porter
 Advertising Manager -----Vincent O'Conner
 Treasurer -----Mr. Cole
 Faculty Advisor -----J. Frances Graves

For another year the bi-weekly paper, the "Scoop," has been successful; not only in a financial way, but also in creating enthusiasm among the students. Five cents was the price charged per copy, or seventy-five cents for a year's subscription. The editor in chief and associate editor were chosen by the faculty, and the students elected the other members of the staff.

Under the excellent advice of Miss Graves, the editor and his co-workers issued the first number of the "Scoop," October first, 1915. A great share of the credit was due to Charles Ames, the staff cartoonist, who aided in making that number and those which followed, clever and interesting. Since that date there have been fifteen issues, including three specials: basket ball, the girls' and the senior.

As the year draws to a close, and the staff lay aside their duties, which will be undertaken by other students next year, they can honestly say to themselves: "We have done our best."

The "Screamaphras Club"

The girls of the Sophomore class take this means of thanking the staff of this book for giving them a page in the annual, because they feel that, being the "infant" organization in the school, they are unknown to many.

In October it was suggested by Miss Wagner that the Sophomore girls have a sewing club, in order to have a good time socially, become better acquainted and work together for the betterment of the class.

The first meeting was held in November, the girls being entertained by Miss Wagner, who passed herself a good hostess as well as a maker of delicious fudge.

The Christmas meeting was postponed because most of the girls were too busy with other work, and some were spending their vacation out of town.

Mildred Allen, Edith Hammond, Irene McGonigle, Amy Fifield, Flora Tobyne and Anna Stevenson, the hostesses of the January meeting, served apples and popcorn, to which everyone did justice. They entertained us with clever conundrums and guessing contests. At this meeting Miss Wagner delighted the girls by reading "Daddy Long Legs," by Jean Webster.

Pearl Wenzel, Florence O'Connor and Anna Penning were the hostesses of the next meeting at which coasting was the chief sport of the afternoon. (Of course, the faculty didn't indulge in the sport, because the sleds were too small.)

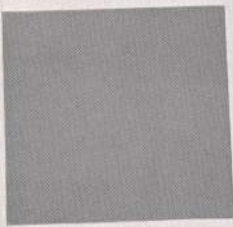
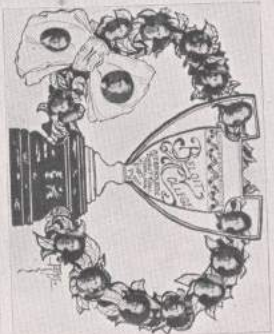
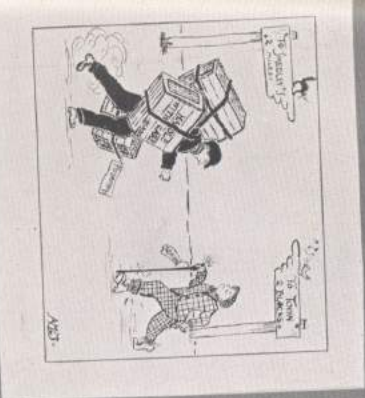
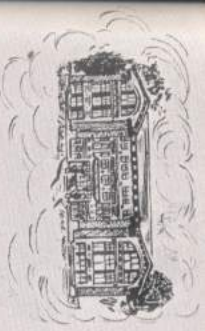
The March meeting was conducted in the form of a Valentine meeting by Dorothy Porter, Lucile Graves and Loretta Lampert. The future of many of the girls was told by throwing a heart into a basket.

Mary Meyers, Gertrude White and Pearl Burton, who had charge of the April meeting, served ice cream and wafers.

In May, the girls hope to "hike" to some distant, secluded spot, under the worthy leadership of June Richardson.

The members of the faculty who were guests at the various meetings were the Misses Wells, Vanderbilt, Harvey and Lindquist. One member of the faculty, Mr. Cole, must not be forgotten, although he didn't stay long.

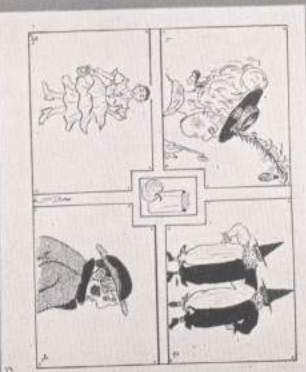
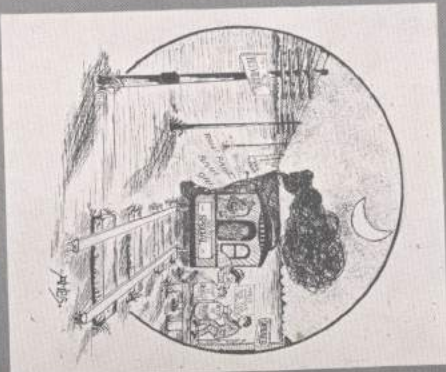
The memories of these meetings will become more pleasant as the years go by, for we hope they may be continued during the Junior's year.



Charles E. Davis

THE YEAR IN BLACK & WHITE

...CARTOONS FROM THE SCOOP 1915-16...



"Where are you going, my pretty maid?"
"I'm going to sneeze, kind sir," she said.
"At whom will you sneeze, my pretty maid?"
"Atchoo! Atchoo! kind sir," she said.

JUST IMAGINE

Miles McKeown studying.
Marion Davis when she isn't busy.
Ben Lear wearing his coat.
John Brady with a stiff collar.
Hazel Pratt wearing her hat.
Harold Neff being a farmer.
Miss Chewing with a serious expression on her face.
Madeline Fane without dimples.
Lowell Fair without a girl.
Ruth Sager an actress.

Miss Vandewort: The hardest thing I ever did in my life was to be a judge at a college debate; and I was convinced, O! so many times.

B. Jury: That shows you are not strong minded.

Before exams:
Lord God of Hosts! Be with us yet!
Lest we forget! Lest we forget!
After exams:
Lord God of Hosts was with us not,
For we forgot! For we forgot!

The smile that won't come off—"Buddy" Cleaver.

Miss Vanderwort writes on the board:
Major premise—Many great people are poor writers,
Minor premise—I am a poor writer,
Conclusion—I am great.

WEATHER FORECAST

Spring, sweet spring is cubbig,
I feel it id the air,
See, the sdow is geddly thaw'g,
Bud ad slush are eberywhere.
Dow, I doff by widder fladdels,
Ad I dod by subber clothes.
Ad for weeks ad weeks together,
Vadely dry do blow by dose.

Mildred B.—"Would you be willing to work for a husband?"
Gert B.—"Yes, until I had him."

A parting suggestion—Be a self starter. Don't wait to be cranked up.

God must have loved flunkers, he made so many of them.

Miss Fellows in Geometry—"What's the matter with your figure?"
Anna Penning—"Oh! I guess it's all right."

Vera D.—"Have you noticed that my dog looks like Shakespeare?"
Helen H.—"Yes, he has a Hall Caineine expression."

Roy J. in Eng. II.—"What is cross examination?"
Lowell F.—"It's something that mixes you all up."

We're sorry, kind friend;
That we can't roast you all;
For our pages are limited,
And our oven is small.—Ex.

**HAMMERSMITH
ENGRAVING CO.**



**ENGRAVERS
PRINTERS**
College Annals Complete
MILWAUKEE, WIS.

