



This Copy of "The SPHINX" Belongs to

Name Charlotte E. Biester

Address Country

Class B.H.S '17

The SPHINX



Being the Year Book
of the High School of
Belvidere, Illinois.

1913—1914

To the students of Belvidere
High School, to our scores
of loyal alumni, to our faithful
patrons, we, the Annual Board,
extend greetings, with the hope
that you may find interest and
pleasure and abiding memories
within these pages.



OUR VOW.

*Oh, many a High School is larger,
And many more loudly boast;
But our voices we raise in honor and praise
To thee whom we love the most*

*Oh, yes, many others are larger,
But none are so faithful as thou,
With justice and right, dost thou enter the fight,
To truth thou hast made thy vow.*

*Indeed, many others are larger,
But where will such spirit be found?
With firm loyalty we promise to thee,
Brave hearts that can never be downed.*

*O Belvidere, here do we swear thee
Fidelity, honor and love—
We will give of our best, and will count ourselves blest,
As long as thy flag floats above.*





With reverence, and pride, and delight we dedicate the 1914 Sphinx to a man who, despite manifold duties, always rises to the occasion when no one else can unravel a tangle or clean up a disgrace; who, despite broad interests, has kept Delvidere ever first in his heart; who, because of his character and wisdom, will ever be first in the heart of every true townsman—

Dr. H. S. Whitman.



DR. F. S. WHITMAN.

The ANNUAL BOARD.

Editor-in-Chief Gladys Carlson
Associate Editor Milton Newell

BUSINESS STAFF.

Business Manager Robert Wright
Circulation Manager Cuthbert Gabel
Treasurer Mr. Cole
Faculty Advisor Miss Adams

CALENDAR

Chairman—Berneita Moran
Florence Althaus
Stephen McGonigle
Ruth Sager

ILLUSTRATION

Chairman—Guerdon Laing
Cuthbert Gabel
Bernard Smith

ATHLETICS

Chairman—Louis Whitney
Clarence Inman
Richard McKee
Bernard Smith
James Sexauer

ALUMNI

Chairman—Margaret Wyman
Channing Biester
Janet Butterfield
Donald Huff

ORGANIZATIONS

Chairman—Marion Fitzer
Leila Watson
Blanche Sewell
Russell Durand
Gertrude Slater (*President of
the Camera Club*)

DRAMATICS

Chairman—Charles Courville
Iva Colburn
Gertrude Huber

JOKES

Chairman—Margaret Peale
Avis Soost
David Melzer
Ralph Hall
Jay Bennett

HIGH SCHOOL

Chairman—Charles Ames
Arthur Walquist
Helen Goodwin

SENIOR

Chairman—Alice Nelson
Marguerite Meyers
Verne Douglas
Clara Mae Spencer
Oliver Perry

SOCIAL

Chairman—Elisabeth Witbeck



THE AUTHORS OF THIS BOOK.

The Board of Education.

*So generous and wise are they,
So fond of them are we,
We wish they'd come and visit us—
At least occasionally.*



Board of Education

OFFICERS:

President, DR. F. S. WHITMAN

Secretary, DR. R. B. ANDREWS

MEMBERS:

DR. ANNIE ALGUIRE

W. S. BROWN

D. A. FULLER

N. W. WILCOX

OUR FACULTY.



*Listen, dear people and you shall hear,
Why everyone loves the teachers dear.
All make us labor and sometimes hard,
But glory awaits on the quarterly card.
Sentiments lovely we write with delight,
Then grind Mathematics with all of our might,
After our work we are off for a hike
And teachers for once do whatever they like.
From the faculty ranks comes a coach in athletics,
And another who's apt when it comes to dramatics.
In short they are versatile, clever and kind
And no one more willing to help could we find,
And so though they work us and fill us with woe,
We cannot help seeing that they help us to grow.
So this is the reason we want you to hear
Why everyone loves the teachers dear.*



Mr. Lewis A. Reisner
Superintendent

Mr. John E. Alman.
Principal, Civics.

Miss J. Frances Graves.
Ass't Prin., German.

Miss Lila Irene Lewis.
Art.

Sterling Twp. H. S.
Sterling, Illinois.
DeKalb Normal
N. U., B. S.
One year in Belvidere
Schools.
Previously taught at
West Chicago, Ill.
Home Town is Sterling,
Illinois.

Wilson H. S., Wilson,
Kan.
Kansas Wesleyan Univ.
A. B.
NW. U., A. M.
One year in Belvidere
Schools.
Previously taught at
Elgin Academy, 2 yrs.
and Harvard H. S.,
Principal, 2 yrs.
Home Town is Salena,
Kansas.

Evanston Academy.
NW. U., B. A.
Previously taught two
years at Genoa, Ill.
Taught in Belvidere H.
S. five years.
Home Town is Hinck-
ley, Illinois.

Belvidere H. S.
Grad. of Applied Arts
and Athenaeum.
Attended Art Institute,
Art Craft Institute &
Prang.
Six years in Belvidere
School.
Home Town is Belvi-
dere, Ill.

Miss Lulu E. Umbach.
Botany, Ancient Hist-
ory and German

Mr. Harry Lewis Cole.
Chemistry, Agriculture

Miss Laura C. Gary.
Music

Miss Helen B. Wells.
Algebra

Naperville, H. S. Na-
perville, Ill.
NW. College, B. S.
Three yrs. in Belvidere
Schools.
Home Town is Naper-
ville, Illinois.

Manhattan H. S., Man-
hattan, Kansas.
Kansas State Agricul-
tural College.
Two years in Belvidere
H. S.
Home Town is Eure-
ka, Kan.

Wheaton H. S.
Woman's College of
Baltimore.
Peabody Institute—N.
E. A. Summer School.
Previously taught at
Milledgeville, Ill., &
Elmhurst, Ill.
One year in Belvidere
Schools.
Home Town is Wheat-
on, Ill.

Galva, Ill., H. S.
Knox College, B. A.
B. H. S. four years.
Home Town is Galva,
Ill.





Miss Mabel E. Gilchrist	Miss Helen E. Adams.	Miss Margaret Harvey.	Miss Flora Fellows.
English III and IV.	English II and Public Speaking	Latin	Geometry
Strawberry Point H. S. Coe College of Cedar Rapids, Iowa. NW. U. B. S. Graduate work at U of C. Previously taught in following schools; Edgewood, Ia., Lansing, Ia., Fairdale, Ill., and Indianapolis, Ind. Four years in Belvidere Schools.	N. B. H. S. NW. U., A. B. Three yrs. in Belvidere Schools. Home Town is Belvidere, Ill.	S. B. H. S. NW. U., B. A. Three yrs. in Belvidere H. S. Home Town is Belvidere, Ill.	N. B. H. S. U. of C. 18 years in Belvidere Schools. Home Town is Belvidere, Ill.

Miss Martha Lindquist.	Miss Isabel M. Vandervort.	Mr. Martin L. Heitter.	Miss Blanche Chewning
Hygiene, Physiography and Commercial Geography.	History	Mechanical Drawing & Manual Training	English I.
N. B. H. S. Columbia and Chicago University, Ph. B. B. H. S. five years. Home Town is Belvidere, Ill.	Bloomington H. S. S. Ill. Normal U. U. of I. A. B. Taught at El Paso H. S. Belvidere H. S. 1 sem. Home Town is Bloomington, Ill.	Dixon College. De Kalb Normal. Previously Taught at Des Moines, Ia., 1 yr. and Shakopee, Minn., 1 year. Two years in Belvidere H. S. Home Town is Lena Ill.	New Berlin, N. Y., H. S. Syracuse, N. Y., U. Ph. B. Two years in Belvidere H. S. Home Town is St. Charles, Ill.



The FACULTY IN ACTION!



- | | | | |
|------------------------------|--|-------------------------|----------------------|
| 1. Miss Harvey. | 5. Fanny. | 9. The men behind the | 13. Joy-riding. |
| 2. That smile of Miss Wells. | 6. Miss Gilchrist | game. | 14. Miss Fellows and |
| 3. "Come on in" —Miss Adams. | 7. What's the matter? —Miss Lindquist. | 10. ? ? | Miss Vandervort. |
| 4. Mr. Alman. | 8. Miss Umbach. | 11. At a Football game. | 15. Foiled Again! |
| | | 12. Miss Graves. | |

Scholars



GADEL '14

The CLASSES.



*Sing me a song of High School days,
Now tell me which is best:
Freshman or Sophomore or Junior year,
Does the Senior year beat the rest?*

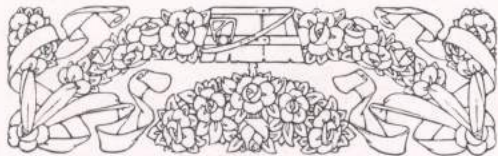
*The Freshman comes with downcast eye,
His heart goes flippity-flop—
But long before the end of the year,
He thinks he's up on the top.*

*The Sophomore goes to sleep on the job,
His studies take a slump,
His High School spirit is minus quite,
And what he needs is a bump.*

*The Junior does wake up a bit
He knocks with might and main:
His class is dead,—the school is slow,—
The teams give him a pain.*

*But when the Senior year rolls round,
He finds a better plan:
No knocking! He goes right in,
And helps them all he can.*

*Sing me a song of high school days,
And tell me which is best:
Freshman or Sophomore or Junior year?
No! The Senior year beats the rest.*



SENIOR CLASS.

Officers

President	Bernard R. Smith
Vice President	Louis C. Whitney
Secretary	Mae C. Paulson
Treasurer	Verne K. Douglas

Class Motto:

"We Aim to Do the Best That is Within Us."

Class Colors:

"Maroon and White."

Class Flower:

"The Red Rose."

Class Yell:

"Loop the Loop!

Leap the Gap!

Fourteen's Coming,

Get Off the Map!!!"

HISTORY.

The year 1910 will long be remembered for many various events, one of which was the incoming class of 1914. This class, noted for its high ideals, its intellectual capability, progressive spirit and pleasing manners, has, under wise and proficient management, successfully completed its High School career.

In all activities, in the literary world, in dramatics, in athletics, and in social affairs we have been honorably represented.

We have at all times and on all occasions held the honor of our school to be paramount. To every enterprise undertaken by us, we have given the best that was within us, and I can truthfully say that, when the last history of Belvidere High School is written, the deeds of the "Class of 1914" will occupy a very prominent place.

MAE C. PAULSON, Secretary.

BERNARD SMITH

"Smitty"

Class Sect. (2)
Vice Pres. Class (3)
Pres. Class (4)
Pres. Boys' Glee Club (4)
Chorus (1), (2), (4)
Football (4)
Minstrel Show (4)
Debating Team (4)
Athletic Association (1), (2)
Glee Club Operetta (4)

"Just a nice, nice man, not thin, nor fat,

Nor tough, nor anything else like that."

LOUIS WHITNEY

"Duke"

Vice Pres. Class (4)
Sect. & Treas. Boys' Glee Club (4)
Athletic Editor "Scoop" (4)
Minstrel Show (4)
Glee Club Operetta (4)
"Sphinx" Reporter (2)
Camera Club (4)
Athletic Association (2), (3)

"He's just a nice, big, polite child, who through High School was exceedingly mild?"

VERNE DOUGLAS

"Dug"

Glee Club (2), (4)
Basket Ball (2), (3), (4)
Football (2), (3), (4)
Treas. of Camera Club (4)
"Gleam" reporter (2)
"Sphinx" reporter (3)

"There must be lots of good, hard work in him, for none of it ever comes out."

MAE PAULSON

"Mae"

Chorus (1)
Sect. of class (4)

"Do you know a young and beautiful woman who is not ready to flirt—just a little?"





JAY BENNETT

"Jay"

Athletic Association (3)

"A bold, bad man."

ALICE NELSON

"Jack"

Vice Pres. Athletic Association (4)

Class Sect. (3)

Exchange Editor "Scoop" (4)

Basket Ball (2), (3)

Camera Club (4)

Literary Society (4)

"Come and Trip it as you go."

ETHEL DODGE

"Dod"

Chorus (1)

Athletic Association (2), (4)

Literary Society (4)

"For she was just the quiet kind,
whose natures never vary."

GLADYS FLEMING

"Dud"

Chorus (1), (2)

Athletic Association (2)

Literary Society (4)

"We have been friends together,
In sunshine and in shade."

GLADYS WHITING

"Sticky"

Chorus (1), (2)

Glee Club (4)

Literary Society (4)

Camera Club (4)

Athletic Association (4)

"I will not budge for no man's pleasure, I."

GLADYS CARLSON

"Glad"

Chorus (1)

Class Reporter (2)

Associate Editor "Sphinx" (3)

Editor "Scoop" (4)

Editor "Annual" (4)

Librarian (H. S.) (4)

Literary Society (4)

"I awoke one morning and found myself famous."

JAMES SEXAUER

"Jimmie"

Athletic Association (4)

"You may safely trust the man."

GEORGIA HANNAH

"Jo"

"If 'twere not for my dogs,
I think I could not live."





CLARA MAE SPENCER
"Shorty"

Camera Club (4)
Literary Society (4)
Athletic Association (1), (2),
Glee Club (2), (3), (4)
"Blushes cannot be counterfeited."

LEILA WATSON
"Prunes"

Chorus (1), (2)
Glee Club (4)
Literary Society (4)
Athletic Association (4)
"Childish innocence has the purity
of the rose, and the wholesomeness of
the sunshine."

MARGARET PEALE
"Margot" and "Steve"

Sect. of '14 class (1)
Pres. of '14 class (2)
Ass't Treas. of class (3)
Chorus (1), (2), (4)
Glee Club (4)
Literary Society (4)
"Nothing so truly becomes feminine
beauty as simplicity."

ROBERT HARLOW
"Friday"

Football (3), (4)
Basket Ball (3), (4)
Minstrel show (4)
Glee Club (4)
"Thou art pale in mighty studies
grown."

ETHEL CONLEY

"Pickle"

Chorus (1), (2), (3), (4)

Glee Club (4)

Glee Club Operetta (2)

Literary Society (4)

"Her hair, down-gushing in an armful flows,

And floods her ivory neck, and glitters as she goes."

ELLIOT BIESTER

"Dope"

Football (4)

Athletic Association (4)

"Those who are five minutes late, do more to upset the order of the world, than all the anarchists."

EVALOU HANCOCK

"Lou"

Glee Club (2), (4)

Literary Society (4)

Chorus (2), (4)

Pres. Glee Club (4)

"She will sing the savageness out of a bear."

GERTRUDE HUBER

"Gert"

Glee Club (2), (4)

Basket Ball (2)

Chorus (1), (2), (3), (4)

Quartet (3)

Athletic Association (2), (4)

"Hey-day, what a sweep of vanity, comes this way."





HELEN DELAVERGNE

"Blonde"

Chorus (1)

Athletic association (2), (4)

'For information, ask Marguerite Sullivan; we never see her.'

MARGUERITE SULLIVAN

"Cutie"

Athletic Association (4)

Chorus (2)

"Many are my favorite poems:
That I recite with great expression
And in a melodramatic voice
That leaves a great impression."

STEPHEN McGONIGLE

"Bubbles"

Pres. of '14 class (1)

Pres. Athletic Association (4)

Football (1), (2), (3), (4).

Cheer Leader (4)

Minstrel Show (4)

"A man whose eloquence has power

To clear the fullest house in half an hour."

GERTRUDE SLATER

"Trude"

Glee Club (1)

Pres. Camera Club (4)

"And her sunny locks hang on her temples like a golden fleece."

ELISABETH WITBECK

"Liz"

Pres. Literary Society (4)
Social Editor "Scoop" (4)
Glee Club (1), (2), (3), (4)
Sect. Athletic Association (4)

"I wish that some girls I could
name, were half as silent as their pic-
tures."

MARGUERITE MEYERS

"Marg"

Chorus (1), (2)
Glee Club (4)
Literary Society (4)
Camera Club (4)
Vice Pres. '14 class (2)

"Cheerful at morn, she wakes from
short repose,

Breathes the keen air and carols as
she goes."

AVIS SOOST

"Kitestring"

Chorus (1)
Literary Society (4)
Camera Club (4)
Athletic Association (4)

"I've a sense of humor."

ELIZABETH FIFIELD

"Liz"

Athletic association (2), (4)

"If thou desire to be held wise, be
so wise as to hold thy tongue."





BESSIE MULLIGAN

"Betsy"

Sect. of '14 class (1)

Chorus (1)

Glee Club (1)

"I just can't help smiling."

HELEN GOODWIN

"Stub"

Basket Ball (2)

Chorus (1), (2)

Glee Club (4)

Treas. of Literary society (4)

"She has good eyes, but Oh!— She doesn't know how to use them."

BOYD NEWMAN

"Curley"

"Beware! I may yet do something sensational."

HAZEL HULETT

"Teddy"

Chorus (1), (2)

Glee Club (1), (2)

Basket Ball (2)

Quartet (3)

"A wide spreading, hopeful disposition is the best umbrella for this vale of tears."

ADA DUNBAR

"Dicky"

- Glee Club (1), (4)
- Chorus (1), (2), (4)
- Athletic Association (2), (4).
- Glee Club Operetta (4)
- Camera Club (4)
- Literary Society (4)

"O! I am stabbed with laughter."

IVA COLBURN

"Ivie Mae"

- Chorus (1), (4),
- Literary Society (4)
- Glee Club (4)

"What a spendthrift she is of her tongue."

RUBY HUMPHREY

"Reuben"

- Chorus (2), (4)
- Glee Club (4)
- Literary Society (4)
- Athletic Association (4)

"O, fairest of the rural maids."

HARRY BENDER

"Kitty"

- Glee Club (1), (2), (3), (4)
- Athletic Association (4)
- Camera Club (4)
- High School Orchestra (4)

"In him a second Caruso is found, you scarce can tell the difference in sound."





CUTHBERT GABEL

"Hungry"

Glee Club (4)
Circulating Manager "Scoop" (4)
Athletic Association (4)
President of '15 class (2)
High School pianist (4)
Minstrel Show (4)
Camera Club (4)

"I'm only just a little chap,
And my mamma says I'm frail."

MARION FITZER

"Cookie"

Glee Club (1), (2)
Chorus (1), (2)
Camera Club (4)
Literary Society (4)
Senior Reporter "Scoop" (4)
Athletic Association (3)
Basket Ball (2)

"In came Mrs. Fezziwig, one vast
substantial smile."

RUTH CLAYTON

"Rufus"

Chorus (1), (2)
Literary Society (4)
Glee Club Operetta (4)
Glee Club (4)

"The one exclusive sign of a thorough
knowledge is the power of
teaching."

RICHARD MCKEE

"Dick"

Football (4)
Athletic Association (3)
Pres. of '14 class (1)

"Love seldom haunts the heart
where learning lies."

OLIVER PERRY

"Commodore"

Class Sect. and Treas. (1)

Chorus (1), (2)

Class Mantle (3)

"He didn't come out of the ocean,
but nevertheless he's a shark."

LAURA KAHLER

"Kay"

Sect. & Treas. of '14 (2)

Glee Club (4)

Literary Society (4)

"A maiden never bold, of spirit so
still and quiet that her motion blush-
ed at herself."

DAISY COMSTOCK

"Bud"

Athletic Association (2), (4).

"I love it, I love it, and who shall
say, that my tongue ceases wagging,
night and day."

GEORGE SILVERMAN

"Fat"

Circulating Manager "Sphinx" (1)

Class Treas. (1)

Minstrel Show (4)

Athletic Association (4)

"I am so fresh that new, green
blades of grass turn pale with envy as
I pass."





CHARLOTTE MEYERS

"Lottie"

Glee Club (4)
Chorus (1), (2)
Literary Society (4)
Camera Club (4)

"I have always preferred cheerfulness to mirth."

HARRIET BRUCE

"Hattie"

Glee Club (2), (4)
Chorus (2), (4)
Literary Society (4)

"An angel might have stooped to see,
And blessed her for her purity."

ZINA FRY.

"Tiny"

Chorus (1)
Glee Club (4)
Literary Society (4)
Glee Club Operetta (4)
Camera Club (4)

"In truth, sir, she is pretty, honest and quiet, and one that is your friend."

ALICE ILES

"Queenie"

Chorus (1), (2)
Glee Club (2), (4)
Literary Society (4)
Vice Pres. Glee Club (4)

"The streets of vanity fair are always crowded."

SENIOR CLASS WEEK.

<i>Senior Play</i>	Friday, June 12.
	OPERA HOUSE 8:15
<i>Baccalaureate</i>	Sunday, June 14
	METHODIST CHURCH, REV. WM. McKEE
<i>Class Day</i>	Monday Afternoon, June 15
	SCHOOL CAMPUS
<i>Banquet, Junior-Senior,</i>	Monday Evening, June 15
	MASONIC TEMPLE
<i>Commencement</i>	Tuesday, June 16
	OPERA HOUSE
<i>Invocation</i>	Rev. Scheibe
<i>Imperial Quartette, Chicago</i>	
<i>Speakers</i>	Rev. Hugh Baunen
<i>Presentation of Diplomas</i>	George M. Marshall
<i>Benediction</i>	Rev. Smith

SENIOR CLASS HONORS.

<i>Mantle</i>	Guerdon Laing
<i>Valedictorian</i>	Gladys Carlson
<i>Memorial</i>	Oliver Perry
<i>Class History</i>	Helen Goodwin
<i>Class Song</i>	Evalou Hancock
<i>Class Prophecy</i>	Margaret Peale
<i>Last Will and Testament</i>	Elisabeth Witbeck
<i>Presentation of Gifts</i>	Cuthbert Gabel
... ..	Iva Colburn
<i>Class Poem</i>	Mae Paulson

MARION SILVIUS

"Pink" or "Nigger"

Football (3), (4)

"His Tongue is like a racehorse: the faster it goes, the less weight it carries."

SENIOR PLAY.

Van Dyke's "House of Rimmon"—Opera House, June 12th.

The Senior class is very busy preparing for the presentation of its class play, "The House of Rimmon." This is to be given at the Opera House on the evening of June 12th, thus ushering in Senior week. There are about fifty in the cast, so that it is really a class affair and will include every member.

The historical setting is that of 850 B. C. and this has involved much study into the customs, habits, and dress of the period. Tissot, who spent thirty-three years studying the exact details of these people, and who painted the wonderful pictures of Christ, has illustrated the Old Testament as well, and this Bible has been constantly consulted and followed in preparing the costumes of this drama. Mrs. Helen Underhill Fisher of Wheaton, assisted by Miss Gary, is coaching the play and we are sure of a successful rendition.

"The House of Rimmon" is a drama written by Henry Van Dyke, and is founded upon the incident recorded in Second Kings, chapter five. It begins: "Now, Naaman, captain of the host of the King of Syria, was a great man with his master, and honorable, because by him the Lord had given deliverance unto Syria. He was also a mighty man of valor, but he was a leper." This is the keynote of the play and the lofty thought as given by Van Dyke, the glimpse of the heathen worship, the very human interest in Ruahmah, the captive maid from Israel, the story of love and intrigue, and the triumph of goodness, holds one to the end. The great and glorious Shalmaneser is the king of the Assyrians. He has harassed the surrounding countries, and the Syrians, whose king is the somewhat enfeebled Benhadad, have, through Naaman, succeeded in keeping back from their dominions the conquering "Bull" Shalmaneser.

At the beginning of the story the envoys from Nineveh have come to Damascus offering great recompense to Rezon, high priest of "The House of Rimmon," if he will but obtain the consent of Benhadad to terms of surrender. Rezon, who is subtle, proud, and imperious, realizes that his greatest ally will be Tsarpi, the wife of Naaman. Working through her ambition and her vanity, Rezon gets her to conspire with him to do Naaman harm. Ruahmah overhears the plot but as she is a slave she can do nothing. So the climax is reached, an appeal to the gods is made, and Tsarpi gives to Naaman the poisoned cup, which works by slow degrees, consuming Naaman's strength, destroying his sight, and leaving him unclean with leprosy. This gives the opportunity for proving the strength of Israel's God, for

He, through his prophet Elisha, heals Naaman of the leprosy. It is also the background for one woman's treachery, and for another's fidelity.

Setting and Cast of "*House of Rimmon*"

The setting is as follows:

Place: Damascus and the Mountains of Samaria.

Time: 850 B. C.

ACT I.

Scene I.—A month later. Dawn. Naaman's tent near Samaria.

Scene II.—The following morning. The audience hall in Benhadad's palace.

ACT II.

Scene—A week later. Forecourt of the House of Rimmon.

ACT III.

Scene I.—A month later. Dawn. Naaman's tent near Samaria.

Scene II.—The house of Elisha.

ACT IV.

Scene I.—Night. Naaman's tent.

Scene II.—Three days later. Inner court of the House of Rimmon.

Dramatis Personae.

Benhadad, King of Damascus.....	Oliver Perry
Rezon, High Priest of the House of Rimmon.....	Bernard Smith
Naaman, Captain of the Royal Army	Cuthbert Gabel
Saballadin, a Noble of Damascus	Louis Whitney
Hazael	Richard McKee
Izdubar	} Courtiers of Damascus. {
Rakhaz	
Shumakim, the King's Fool	Verne Douglas
Elisha, Prophet of Israel	Harry Bender
Ruahmah, a Captive Maid of Israel	Helen Goodwin
Tsarpi, Wife of Naaman	Margaret Peale
Khamma	}Attendants of Tsarpi.. {
Nubta	
Envoys from Assyrian King.....	Marion Silvius, Robert Harlow
Wounded Soldier	Jay Bennett
Citizens.....	Boyd Newman, James Sexauer, Elliot Biester
Priests, Maids, Soldiers, Priestesses	



"THE STURDY OAKS"

The CLASS of 1915.

The Class of 1915 of the Belvidere High School with a blue and white banner launched out on the "High Seas," in 1911, in search of Greater Knowledge. There was a crew of about fifty hands with Cuthbert Gabel as captain, Milton Newell as mate, Marjorie Ray to record the events, and Clarence Inman to keep the financial side straight. The pilot was Miss Graves.

When the next year came, the class determined to sail once more; some of the members didn't care to go for various reasons, but the crew was reinforced by about twenty new members, so a new captain was elected, his name being Earl McCoy; the mate was Mary Huff; Blanche Sewell kept the reports and Arthur Mitchell tended to the money matters. Miss Adams was elected pilot and the voyage not being so rough, sailing under the new banner of black and red, they indulged in a few social events.

Once more the class of '15 decided to venture out upon the swelling tide, in the year of 1914 under the red and the black, with Clarence Inman as Captain, Sadae McCartney as mate, Neva Newell to keep track of the happenings and Milton Newell to see that the provisions were paid for. Miss Graves was chosen as pilot and when 1914 closes, it is hoped the crew will be ready to sail again next year under the dear old banner of Red and Black.

NEVA NEWELL, secretary.

ROLL of STUDENTS.

Fred Ackerman
Vernon Allen
Florence Althaus
Gladys Banks
Marguerite Beardsley
Edward Benson
Ramona Bollman
Elsie Busse
John Campbell
John Casey
Blanche Closson
Harold Collier
Milton Cornish
Charles Courville
Ruby Dale
Walter Dallas
Neva Difford
Leo Dwyer
Harold Fischer
Lyle Gillette

Wallace Greenlee
Raymond Hall
Mary Huff
Clarence Inman
Harold Johnson
Florence Julin
Robert Keefe
Harold Kiester
Guerdon Laing
Sadae McCartney
Earl McCoy
Viola Meiklejohn
David Melzer
Arthur Mitchell
Berneita Moran
Milton Newell
Neva Newell
Agnes Norton
Rosa Penning
Genevieve Pfitzinger

Spencer Porter
Eunice Peart
Irene Powers
Lee Poyer
Walter Pulse
Helen Rosecrans
June Sands
Mabel Schwarz
Blanche Sewell
Bess Sigurd
Stanley Shane
Pearl Soost
Sydney Starr
Bess Strong
Harold Thomas
Arthur Walquist
Louise Whitman
Elmer Wilkey
Raymond Willard
Robert Wright



"THE SAPLINGS"

The CLASS of 1916.

The class of 1916 started out in 1912 with 90 students. The officers elected were: President—Willard Cleaver; Vice President—Ray Slater; Secretary—George Fox; Treasurer—Harold Kizer; the class adviser—Miss Harvey; chairman of the social committee—Hazel Pratt.

The girls wanted Brown and Gold for the class colors and the boys wanted Orange and Black. The ballot box was stuffed, so as Freshmen we had no class colors. Two social events marked the year: the first was a class party at the Masonic Temple; later the Sophomores entertained us at the Y. M. C. A.

Out of the 90 who started there were but 64 who passed examinations and entered the Sophomore class. Our president this year has been Harold Neff; vice president, Elvira Barr; secretary, Ruth Sager; and Treasurer, Ray Slater.

Our colors are Orange and Black. Our class adviser is Miss Adams. The chairman of our social committee is Hazel Pratt.

We have been prominent in school athletics, especially in basket ball since all but three of this year's squad are from our class.

RUTH SAGER, Secretary

ROLL of STUDENTS.

Alzora Adams
Ruth Adams
Irene Ardis
Lillie Aves
Elvira Bahr
Mildred Baxter
George Bender
Gail Birkett
Gertrude Blake
Elva Bogue
Gladys Bone
John Brady
Floyd Brainard
Regina Carney
Willard Cleaver
Mildred Coonrad
Hal Cunningham
George Curran
Carl Dallas
Harold Dodson
Russel Durand
Genevieve Faire

George Fox
Maud Fleming
Helen Gallagher
Arthur Gilbertson
Varena Graves
George Hopkins
Elmer Hopkins
Ernest Humphrey
Foyd Jury
Grace Kiester
Stanley Kiester
Harold Kizer
Verna Krans
Charlotte Lampert
Heather Lanning
Ben Lear
Josephine Madigan
El Donne Manning
Anna McKee
Grace Meehan
Ruth Midkirk
Harold Neff

Marjorie Pilon
Bailey Porter
Clifford Porter
Ralph Porter
Hazel Pratt
Beatrice Richardson
Helen Rislow
Harriet Rosecrans
Elizabeth Sager
Ruth Sager
Valeta Severns
Alice Schimkat
Donald Slater
Ray Slater
Clara Smith
Florence Stanton
Helen Walquist
Elizabeth Weston
Earl White
Geraldine White
Mattie Wollenberg
Neal Wright



"THE ACORNS"

The CLASS of 1917.

On September ninth, 1913, the class of 1917, a band of ninety-one strong, were enrolled in the ranks of the Belvidere High School. We were under the leadership of Boyd Watkins, James Conley and Grace Meyers. Since we were the largest class that had ever entered that renowned portal, the upper classmen were naturally awed, but they greeted us with smiles and peals of laughter. After being sneered at and called "Greenies" for some time, we finally got up courage to call a class meeting and take the banner of blue and white to represent us.

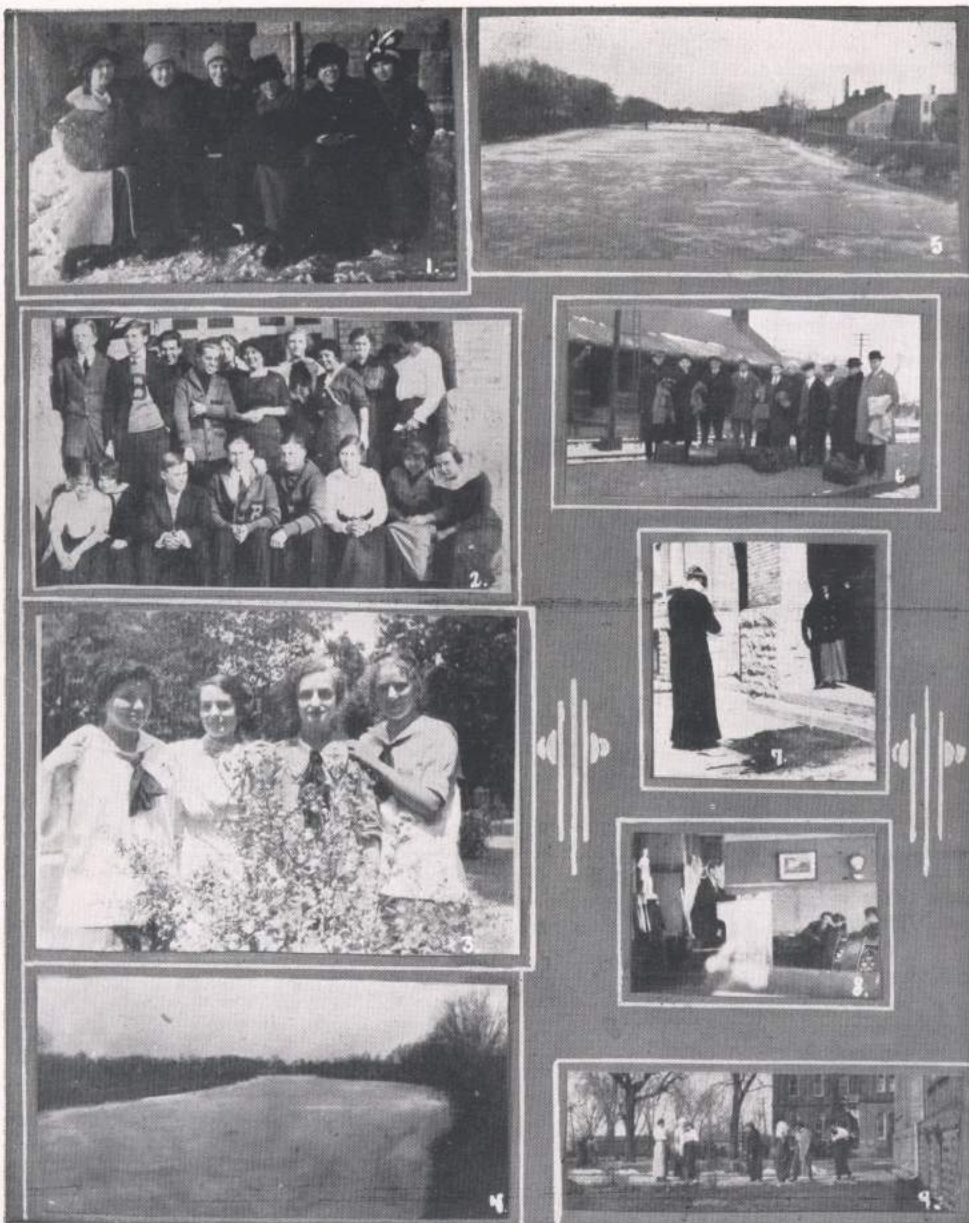
In order to show their esteem for our class, the staff allowed us to issue an edition of the "Scoop." This was considered a great privilege.

The Freshmen gave a class party to which all the faculty were invited and this event proved to be a great success.

Of the standard of work maintained by this class, let us hope that the figure "17" will be printed in large type upon the annals of the Belvidere High School.

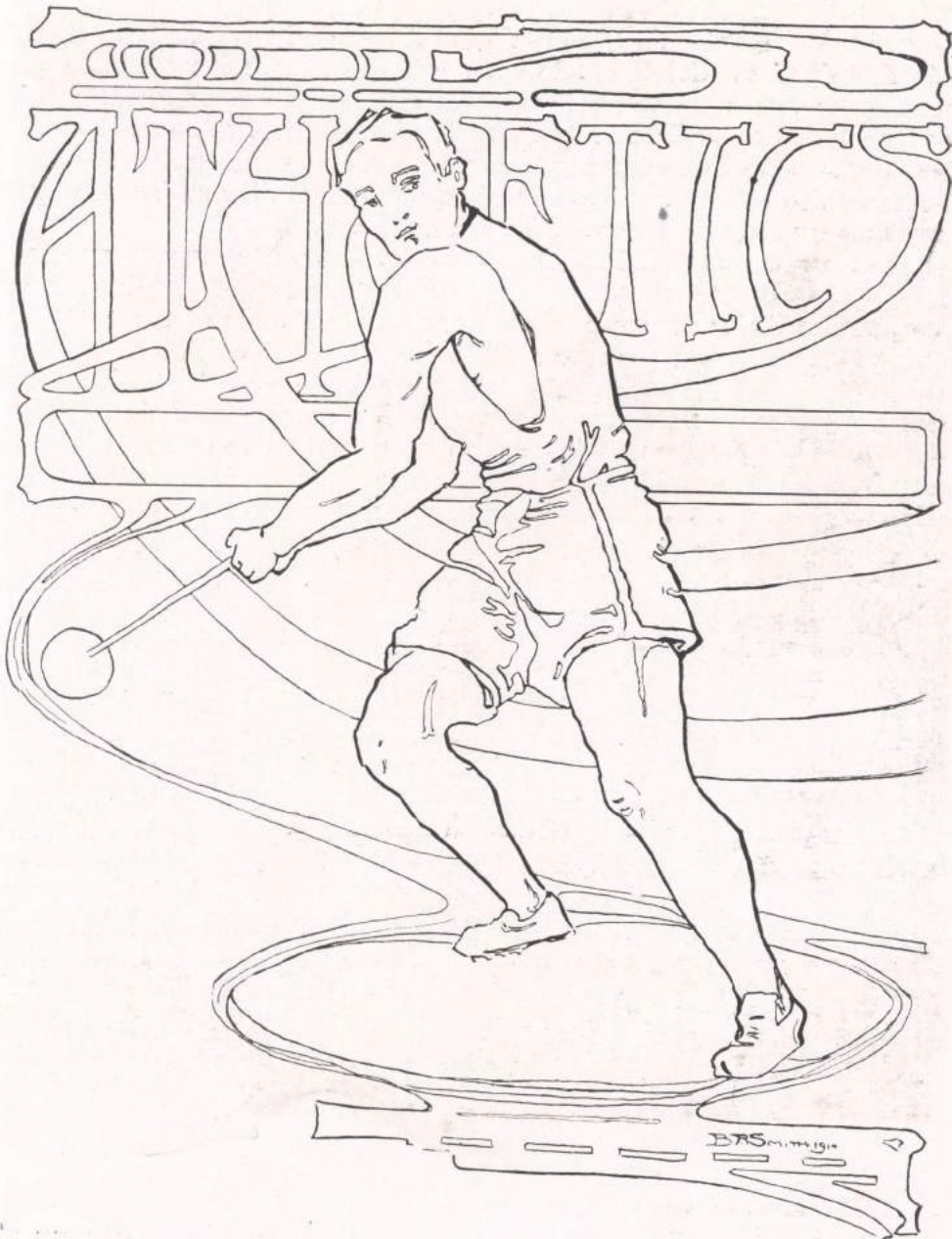
ROLL of STUDENTS.

Vernice Atwood	Grace Gay	Daisy Plane
Joy Allen	Hazel James	Gertrude Porter
Charles Ames	Dorothy Jones	Wilma Porter
Esther Andrews	Clara Kaltenbach	Violet Reser
Jennie Arnold	Francis Keefe	Edioin Schwarz
Fern Bailey	William Klaas	Mabel Steward
Charlotte Biester	Mary Lamb	Elizabeth Stone
Lillian Biester	Gladys Lobdell	Louise Schwebke
Hazel Bishop	Lueceba Lobdell	Dorothy Sellick
Eldon Bowley	Bess Loy	Margaret Shane
Grace Brown	Frank Luhman	Clinton Spackman
Pearl Burlingame	Wyla Lucas	Katherine Spaulding
Elizabeth Burns	Keith Marcellus	Ada Stearns
Nettie Casey	Lewis Mayer	Ruby Stearns
Gladys Catchpool	Genevieve McCarthy	Erma Swindells
John Closson	Katherine McKee	Glen Taylor
Herbert Comstock	Bertha Melzer	Marie Taylor
James Conley	Walter Menue	Harry Thompson
Harold Davis	Dorothy Meyers	Harry Valentine
Marion Davis	Grace Meyers	Beatrice Voorhis
Ruth Davis	Lulu Midkirk	June Walker
Cornelius Dwyer	Susie Moore	Boyd Watkins
Louise Durand	Annie Nelson	Jesse Weaver
Leon Frederickson	Phil Norton	Mabel Weaver
Charlotte Garvey	Vincent O'Connor	Ester Webster
Helen Hall	Raymond Purenton	Albert Welch
Ralph Hall	Irene Parent	Pearl Woods
Ruth Havenor	Frederica Pagels	Arthur Zillmer
Dorothy Hood	Ruth Pettet	
Vernita Glass	Clara Piel	



1. Some Bunch!
2. The Farmers.
3. Les Inseparables.
4. Our Noble Kishwaukee.
5. A Beautiful Scene—Not the factory.

6. Off for the Tournament.
7. Caught Unawares.
8. Mr. Cole and Mr. Lincoln.
9. Learning to Tango.





ATHLETICS



FOOTBALL.

On the whole, the football season of 1913 has been a successful one for Belvidere High School. The outlook at the opening of the season was very discouraging, eleven of last season's squad having graduated or left school. There were only four men left upon which to build this season's team.

However, when the call for recruits was sounded by Coach Reiser, there were seventeen men who responded and were soon "in the grind." "The grind" consisted of signal practice and scrimmage, for an hour each night, immediately followed by the tedious job of "rushing" the tackling dummy and "bucking" the charging-sled.

The oldest man in service on the team is Stephen McGonigle, who has finished his fourth and last season as a participant in High School football. Next in line comes Earl McCoy, having played in the majority of the games for three years.

With the presentation of the diplomas in June, eleven of the seventeen men reporting for service, at the opening of the season, will pass out from under the guardianship of their Alma Mater: McGonigle, Harlow, Keefe, Douglas, Veale, Biester, Silvius, McKee, Smith, Newman, and Melzer have "served their time" and we hope that they will go to a higher education and to higher athletics, and bring nothing but honor and glory to the school that sheltered them in their first endeavors, Belvidere High School.

Belvidere's Record for 1913.

September 27—Woodstock at Woodstock.....	Opp. Bal. 13— 6
October 4—St. Charles H. S.—Game cancelled.	
October 11—St. Charles Boy's Home at Belvidere.....	7—27
October 18—Woodstock at Belvidere	6— 0
October 25—Rochelle at Belvidere	6—12
November 1—Marengo at Marengo	20—30
November 8—DeKalb at Belvidere	7—20
November 15—Woodstock at Woodstock	30— 0
November 22—Rockford Seconds at Rockford	18— 0
November 27—Rockford Seconds at Belvidere	6—26
Totals	122 125

The Players.

To convert a bunch of raw, green recruits into a team of fast, heavy football players might seem a hopeless task to some, but to Coach Reisner, it was merely one that required patient and persistent effort. Being in daily contact with the players in their practice, he is most capable of telling the merits of each individual player.

"Of the backs McCoy is probably the best all round man. His only weakness was a tendency to miss signals. He overcame this deficiency however, toward the end of the season. His running back of kickoffs, especially his long run at Rockford, and his work in the out of town games, together with his weight, strength and steadiness, should give him first call as a backfield man.

Wilkey developed from a green player into the best man in the line. His hard aggressive game stamped him as a man of the type needed at tackle. He made many tackles, followed the ball well, and was always on hand for practice. When he learns to tackle well, he will be a valuable man. He was eligible for every game and is a far better high school tackle than the average.

Of the ends, Fox showed the greatest possibilities. He is probably the fastest man on the squad and handles the ball exceedingly well on passes or kicks where his basketball experience helps him. He ought to be placed at half next year. This player did not show his real strength because he played in less than half the games.

Captain Keefe is a strong, aggressive half, good at off tackle smashes, line backs or end runs. He picked his holes well and seldom failed to make his yardage when given the ball. He was a hard man to down and played in all the games except the last quarter of the Rockford game. He tackled well, was strong on defense and passed the ball better than any man on the team. His kicking was about the average. His punting was good, and he kicked about fifty per cent. of his goals. His leadership was excellent.

Harlow's work at half was splendid. He has the size, weight, and skill necessary to win him a place on a college team after another year's experience. His punts, although not long, were well placed and never blocked. He played a strong defensive game and made nearly as many points for the team as Keefe.

Douglas showed great skill as a quarter, running the team well and selecting, for the most part, good plays. He is the best tackler on the team and cut off more than one touchdown. He was not strong in handling punts but this was his only difficulty.

Biester at end was the only man in this position to make a touchdown. He is a steady player, following the ball well, was usually on hand for a fumble, and handled the passes in good shape.

Veale, at end, is slightly heavier than the other ends and played

a cool, steady game. He kept a sharp lookout for fumbles, was good on defense, and made some good gains for the team.

Durand is one of the most faithful men on the team and due to the fact that he was used as a general utility man, playing at guard, tackle, end and half, he did not have the opportunity to show his real worth. He will play a good game next year.

McGonigle played his fourth year for Belvidere, and although out of two games, he was a heavy, strong, reliable tackle. His defensive play was stronger than the offensive. His experience and good nature made him a valuable man on a squad composed largely of beginners.

Benson has the proper weight and build for the tackle position and had he kept up his interest to the end of the season, he would have been rated a star.

Silvius at guard has the ideal build and disposition for the position. He reported late but showed the requisite steadiness and fight to make him a good guard.

McKee was a fixture at guard and played steadily from the beginning. He was out for every practice, was always eligible, never had time taken out, improved greatly and was a power in the line.

Last, but not least, of the regulars, is Kizer, at center. His unusual size and weight, 280 pounds, made him a power on defense but he was rather slow on charging and tackling. He is the heaviest high school center in the state and next year should be a star. He has signified his intention of coming back.

The subs were Melzer, White, Newman and Smith, the latter playing in but one game where he showed great possibilities as a half.

Athletic Season's Financial Statement.

EXPENSES

Total expense of football season	\$272.47
Total expense basket ball season	\$180.93
Total	\$453.40

RECEIPTS

Total receipts of football season	\$134.21
From minstrel show	\$115.45
Receipts of basket ball season	\$149.35
Tag Day	\$ 81.58
From "Union Club"	\$ 5.35
Total	\$485.94

Balance	\$ 32.54
---------------	----------



"THE GIANTS"

FOOTBALL STATISTICS.

NAME	CLASS	AGE	HEIGHT	WEIGHT	POSITION	No. Games	Yrs. Played	OCCUPATION
KEEFE, Capt.	1914	17	5 ft. 10 in.	154	Right Half	8½	2	Loader
DOUGLAS, Mgt.	1914	17	5 ft. 5 in.	115	Quarter	9	2	Chauffeur
HARLOW	1914	17	5 ft. 11 in.	154	Left Half	7	2	Bread Wrapper
MCGONIGLE	1914	18	5 ft. 9½ in.	166	Right Tackle	6	4	Janitor
McKEE	1914	17	5 ft. 9 in.	140	Left Guard	9	2	Student
SILVIUS	1914	18	6 ft.	150	Right Guard	5½	1	Mechanician
VEALE	1914	20	6 ft.	145	Left End	7	1	Hash Slinger
BIESTER	1914	18	6 ft.	135	Right End	7	1	Cyclist
McCOY	1915	19	5 ft. 10 in.	160	Full Back	9	3	Agriculturist
WILKEY	1915	17	5 ft. 9½ in.	145	Left Tackle	8	1	Also Loader
BENSON	1915	19	5 ft. 11 in.	160	Left Tackle	6	1	Pin Setter
KIZER	1916	18	6 ft.	285	Center	9	2	Unknown
DURAND	1916	17	5 ft. 10 in.	137	Left End	7¾	1	Undecided
FOX	1916	18	5 ft. 10 in.	137	Right End	5	1	Magistrate

BASKET BALL SEASON 1913-14.

(By Manager Inman.)

The basket ball team that represented the purple and gold colors have had a very good season, having played thirteen games, winning nine and losing four. Belvidere has made one of the highest scores of the season by defeating McKinley 92 to 13. Most of the games were won in the last half of the season because of their speed, team work and endurance which shows that every member of the team was in the best condition possible.

The players who have taken part in games played this year, in basket ball representing B. H. S. are as follows:

Willard Cleaver, Capt., guard and forward; Clarence Inman, Mgr., forward; Ray Slater, center, guard and forward; George Fox, forward and guard; Ben Lear, forward; Harold Neff, center and guard; Verne Douglas, forward; Robert Harlow, center; Robert Keefe, sub, never had a chance to get into the game.

The following players received the official "B": Cleaver, Inman, Slater, McCoy, Fox, Neff and Douglas. Lear got a sweater but did not play the required number of games for a "B."

NEXT YEAR

The outlook for next year is very bright, partly as a result of a very successful season this year. With the exception of Verne Douglas, who is a Senior, we will have the same team. Ray Slater has been chosen captain; Laing, Brainard, Greenlee, Dodson, Birkett, McCabe, Gilroy, Gillette and Kiester are trying for positions on first and second teams. Most of the games will be played at home.

RECORD OF BASKET BALL TEAM FOR SEASON 1913-1914

Belvidere	23	Woodstock	31
Sterling	51	Belvidere	68
Belvidere	41	De Kalb	26
Rockford Uncas Club	28	Belvidere	24
Belvidere	30	Rockford	32
Woodstock	44	Belvidere	25
Belvidere	32	East Aurora	21
De Kalb	26	Belvidere	28
Belvidere	30	Elgin Academy	25
Sycamore	20	Belvidere	92
Belvidere	57	McKinley H. S.	13

Games Won:

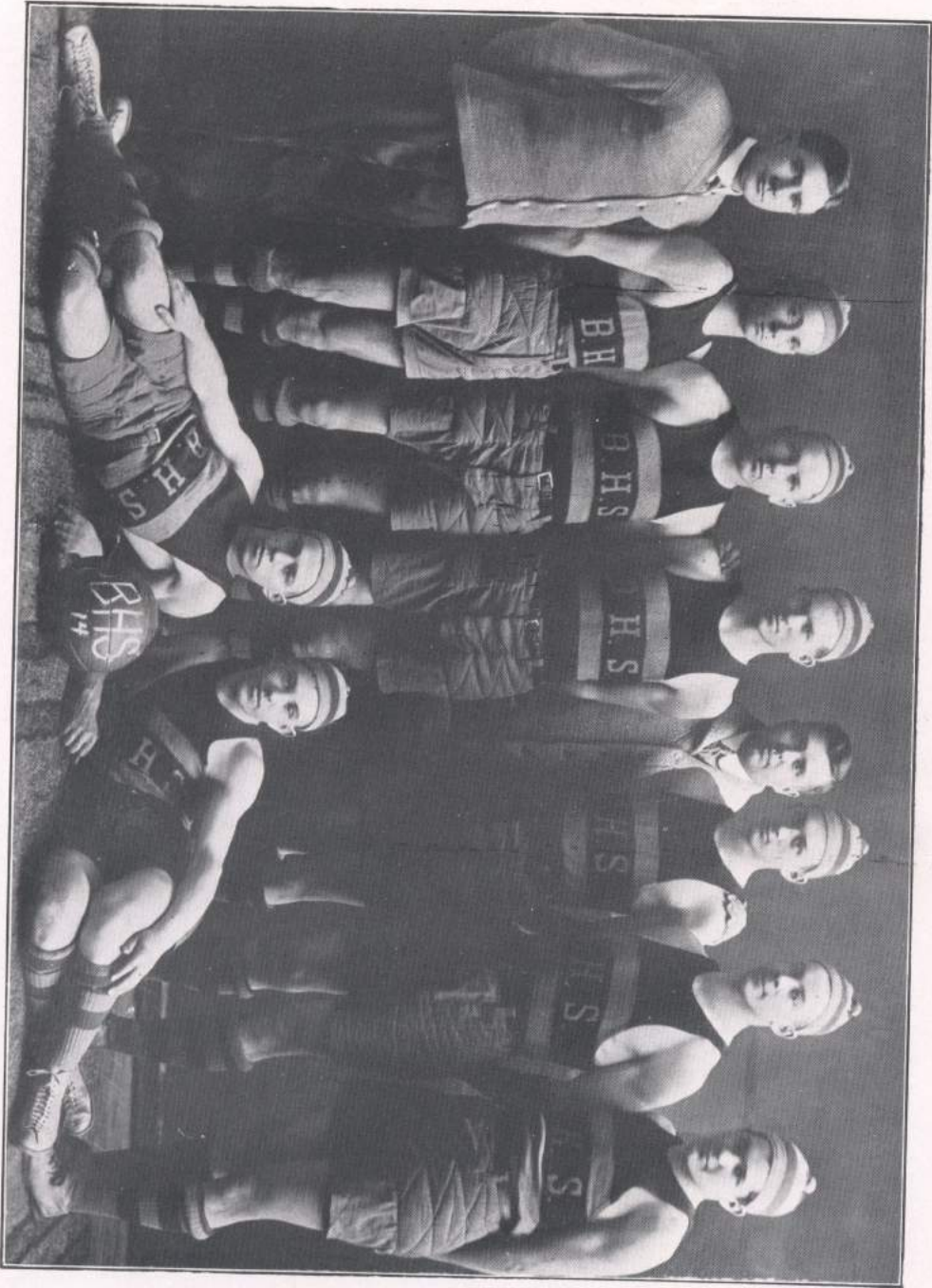
Belvidere	9
Opponents	4

Points:

Belvidere	515
Opponents	375
Belvidere's Lead	140

Tournament Games.

Belvidere	50
Polo	24
Belvidere	15
Sterling	34



"OUR TEAM IS OUR FAME PROTECTOR."



CAPTAIN CLEAVER

played guard. He is a fast and steady player. He graduates in 1916.

MANAGER INMAN

has proved to be a capable manager and is one of the mainstays of the team. He is a big factor on the offensive side. He graduates in 1915.



SLATER

is one of the most consistent players on the team; he has played in every position and played them well. He graduates in 1916. He was elected captain for the season of 1914-1915.

FOX

played guard at the first of the season and then changed to forward. With this change his basket shooting helped win many a game. He graduates in 1916.



McCOY

played center and guard during the season and his guarding was a main factor in winning games. He graduates in 1915.

DOUGLAS

playing forward, always was in the team work and basket shooting. He graduates this year, we are sorry to say.



NEFF

played guard and center during the latter part of the season. His guarding helped the team win many a game. He graduates in 1916.

LEAR

sub forward, although only playing in part of the games showed the class of a regular. We expect much of him next year. He graduates in 1916.

The HISTORY of the "SCOOP"

As the school year of 1913-14 brought many changes, the plan of the High School publication was also changed. After the union of the schools in 1912, the magazine, "The Sphinx," was continued, but at the opening of school in 1913, a new plan came into existence, that of a bi-weekly paper. A staff was chosen by the faculty and the students were asked to submit suitable names for the new publication. "The Scoop," by Berneita Moran, was chosen. The first issue came out on October 31st. The nominal price of five cents per copy was charged or seventy-five cents for a year's subscription. Two special numbers were published: the Sporting Extra, to arouse spirit for the basket ball tournament and the Freshman Number. The former was printed on pink paper to represent a regular sporting extra and came out on February 21st. The Freshman Number was devoted to the Freshmen as its name implies and came out March 20th, on green paper. It has been the aim of the staff to make the paper as "news-papery" as possible, while the cartoons by the staff cartoonist were a great help.

The "Scoop" has been a success in many ways. It has created interest and spirit among the students who have supported it loyally so the staff can say as to finances, "all's well!" Each member of the staff has done his best and through each member working co-operatively, it has been possible to accomplish more.

During the year it was necessary to make several changes in the original staff: Milton Newell taking the place of Harold Fisher as associate editor; Louis Whitney, Bernard Smith's place as athletic editor; Margaret Peale, David Melzer's place as local editor, and Cuthbert Gabel became circulation manager. At the beginning of the second semester, Milton Cornish was unable to continue his work as advertising manager so Milton Newell consented to fill his position and also the associate editorship. On account of Miss Adams' manifold duties with the Annual, debating and oratory, Miss Vandervort took her place for the remainder of the year.

The staff as it stands now, is:

EDITORIAL STAFF.

Editor in Chief GLADYS CARLSON

EDITORS.

Associate MILTON NEWELL

Athletic LOUIS WHITNEY

Social ELISABETH WITBECK

Exchange ALICE NELSON

Local MARGARET PEALE

Cartoonist GUERDON LAING

BUSINESS STAFF.

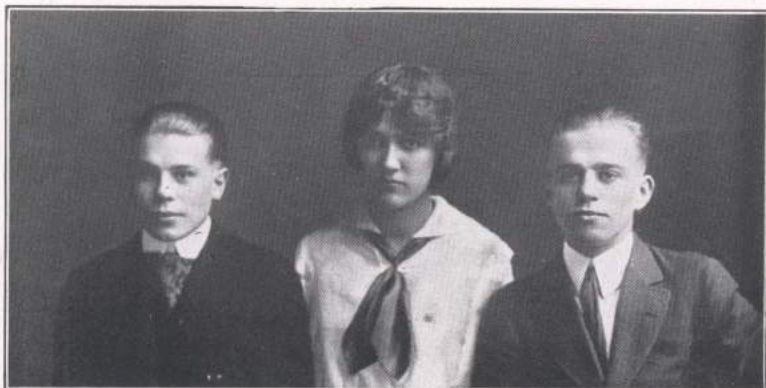
Business Manager BOB WRIGHT

Advertising Manager MILTON NEWELL

Circulation Manager CUTHBERT GABEL

Treasurer MR. COLE

Faculty Advisor ISABEL V. VANDERVORT



BERNARD SMITH

FLORENCE ALTHAUS

VERNE DOUGLAS

DEBATING.

For the first time in the history of Belvidere High School, it has been possible this year to have a debating team. The beginning was made in the spring in the debate between the boys and the girls in which the girls, Gladys Carlson, Marguerite Sullivan and Marion Fitzer, were victorious over Burton Wright, Verne Douglas and Stephen McGonigle. This spring the matter was taken up more seriously and Miss Adams, teacher of Public Speaking and coach, chose a team from the advanced class as follows:

Leader:—Bernard Smith.

Second Speaker:—Florence Althaus.

Third Speaker:—Verne Douglas.

On April 10th, at the Methodist church, the team had their first debate against Beloit High School. The question was: "Resolved, that federal ownership of telegraph and telephone lines is inadvisable." We upheld the negative side of the subject. Despite the fact that the judges, Supt. Reep of Marengo, Supt. Waldo of Sycamore, and Attorney Welsh of Rockford, decided for Beloit, we were very well satisfied, for our average on constructive work was the higher, and rebuttals require experience. We believe the interest of the High School and town has been aroused and we hope for a bigger season next year.

ORATORY.

For the first time in many years, Belvidere entered the oratorical field again. Both the advanced and elementary classes have given recitals such as the following:

Program of Recital on April 24th.

The Death of Lincoln	Bess Sigurd
Touissaint L'Ouverture	Rosa Penning
Spartacus to the Gladiators	Mary Huff

Program for April 31st.

Speech by Patrick Henry	Irene Powers
Lincoln	Berneita Moran
Spartacus to the Gladiators	Gladys Whiting
Touissaint L'Ouverture	John Casey

The members of the advanced class have spent the semester writing and delivering orations. As a result, Cuthbert Gabel's oration was entered in the State Oratorical Contest and received first place in this district. On April 25th, he attended the try-out at Mendota to deliver his oration, and received second place. Philip Carbaugh of Rockford was chosen first.

The class gave a public recital of these orations on the afternoon of March 31st in the assembly room at 2 o'clock.

Program.

The Crucifixion of the Jew	Cuthbert Gabel
Shirtwaists and Shadows	Marguerite Sullivan
The Happy Hunting Ground	Iva Colburn
The Blot on Our Scutcheon	Louis Whitney
The Burbank of Education	Ethel Conley
Epitaph or Prophecy	Robert Wright
The Land of Freedom	Marion Fitzer

PUBLIC SPEAKING CLASS DEBATING

Both the Elementary and Advanced classes in Public Speaking have had numerous contests. One of the most interesting was held at the High School building when three of the boys debated against three of the girls. The affirmative was upheld by Stephen McGonigle, Bernard Smith and Verne Douglas; the negative by Alice Nelson, Marguerite Sullivan and Marion Fitzer.



"THE THREE HONORABLE OPPONENTS"

"The Old Order Changeth, Yielding Place to New."

With changes in the Faculty at the beginning of the school year 1913-14, came changes in the school in general. Recitation rooms were rearranged and Room 2, formerly Miss Lindquist's, became a library. This room was neatly fitted up with curtains, pictures, tables and above all bookcases, packed with books, which have been used extensively during the year. Library hours were posted and Miss Gladys Carlson was appointed librarian. The office was also provided with curtains and a new office desk.

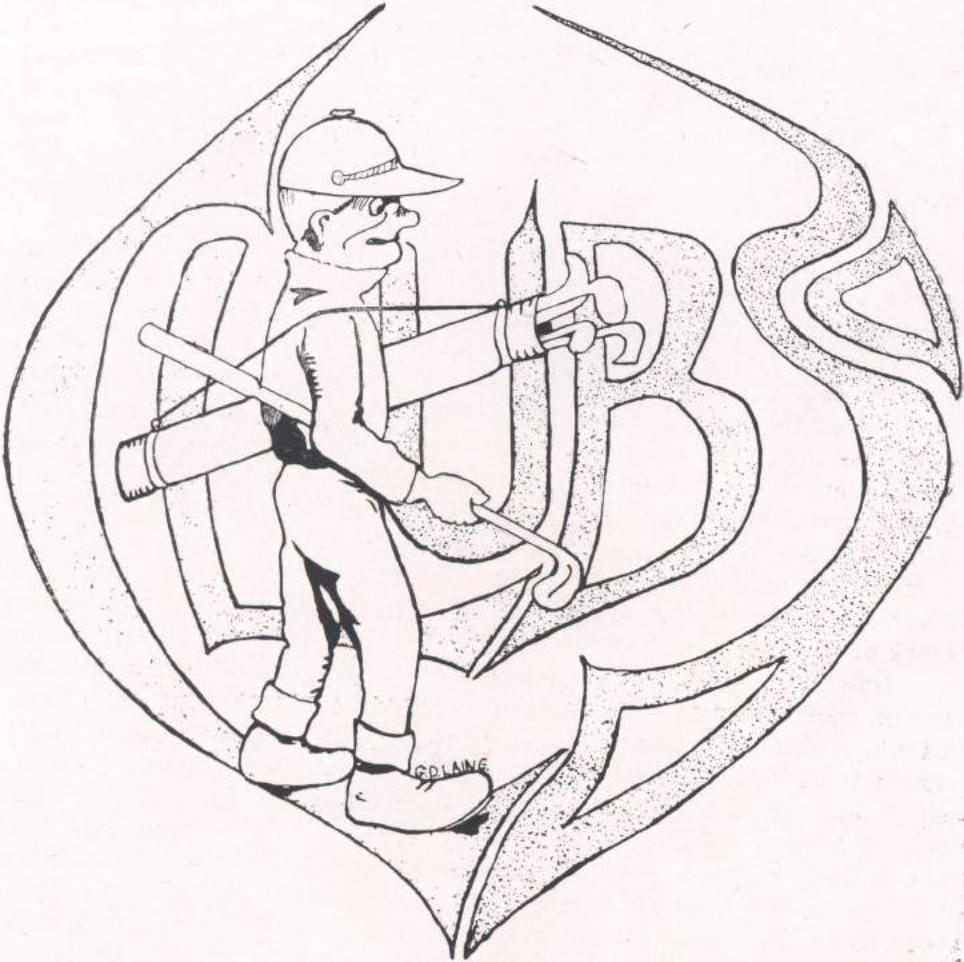
During the Christmas vacation the seating of several of the rooms was rearranged. The platform of the assembly was moved from the west to the south side of the room and the seats that formally faced the platform to the west now face the platform at the south. The seats in Room 9 were reversed, giving a sufficient amount of space in the rear of the room for laboratory tables and apparatus for the Botany class. This room was occupied during the first semester by Miss Adams but at the beginning of the second was given over to Miss Umbach to use in her science work. At this time new lights were installed in the library and in Miss Graves' recitation room.

Mr. Cole made his kingdom in the cellar more attractive during the second semester by having a coat of paint put on the walls and wood work of the basement hall.

One of the greatest changes that have taken place during the year is that in the curriculum. Everyone greeted the announcement at registration that the number of credits required to graduate had been reduced from thirty-two to thirty. Among those thirty must be six in English, four in Language, four in Mathematics, four in Science and two in history. Neither Physics nor Zoology was offered this year and Botany was not given until the second semester. One new subject was added to the curriculum, Advanced Public Speaking, for which a regular credit is given. Sophomores were permitted to take German as a three year course is now offered.

Among other changes or additions which will be mentioned elsewhere are the Boys' Glee Club, the Orchestra, and the "Scoop."

These changes may seem trivial but they have been the making of a bigger and better high school, for which we have all been striving.





The GIRLS' GLEE CLUB.

The Girls' Glee Club was organized September the seventeenth, there being about fifty-two members joining at that time. It has since increased to a membership of sixty-one. The officers elected were as follows: President, Evalou Hancock; Vice-President, Alice Hes; Secretary and Treasurer, Elizabeth Stone; Librarian, Mildred Baxter.

The first social occasion of the season was a party given in December in which the Boys' Glee Club united, and the faculty were the guests of honor. Later, on the twenty-first of February, a Colonial Tea was given in one of the rooms of the High School building. Each member was entitled to invite two guests. The teachers were invited also.

On the seventeenth of April the two Glee Clubs, assisted by some of the grades, gave the operetta, "Princess Chrysanthemum," which was a very successful closing to the season.

The Glee Club owes a great deal to Miss Gary for its success in everything it has undertaken, and she has shown her ability as an instructor of music. Not only has the Glee Club been a source of entertainment but it has been a social factor in the High School and has given everyone much pleasure.

ELIZABETH L. STONE, Secretary



The BOYS' GLEE CLUB.

The Boys' Glee Club was organized September 16th, at which time Bernard Smith was elected president and Louis Whitney, secretary and treasurer. The boys have met every Monday evening in the High School at 7:30. Miss Gary, the instructor, was taken ill shortly after the club was organized and Professor Cole took charge until her return. Cuthbert Gabel is the accompanist. The first stunt furnished by the boys was the "Minstrel Show" on November 21st, which was a great success. About a month later the Girls' and Boys' Glee Clubs gave a reception to the faculty at the Commercial Club rooms. One evening the boys invited their lady friends and had a candy pull. The last entertainment was the Operetta, "Princess Chrysanthemum," in which twelve of the boys took part and did credit to the club.



The HIGH SCHOOL ORCHESTRA.

The High School orchestra was organized in October of 1913. Miss Gary, the instructor in music, was chosen as leader and Harry Bender as manager. Mr. Gabel was first chosen as pianist but resigned and his place was taken by Miss Margaret Wyman. The orchestra now consists of:

Miss Wyman	Piano
Vincent O'Connor	Violin
Louis Greenburg	Violin
Axel Le Roy	Violin
Grant Slater	Cornet
Harry Bender	Clarinet
Herman Whitman	Trombone
Grant Magraudy	Drums

The rehearsals have been held every Tuesday evening at the High School building. The orchestra has played for the Girls' Glee Club party given at the High School in honor of Washington's birthday; the teachers' county institute; and for the operetta, "Princess Chrysanthemum."



The Atheneum Literary Society.

Among the new activities which have been inaugurated this year is to be rated the girls' Literary society. A business meeting was held on the evening of December ninth, at which time the election of officers took place. On December fifteenth a constitution was adopted, and the name of the society chosen.

Ten meetings have been held during the year on alternate Wednesday evenings, in the assembly room. The membership has now grown from twenty-five to sixty-five. The program committee made out a splendid plan which has been followed closely. The subject chosen was American art, and excellent papers were read before the society by various members. Musical numbers, readings, and current events varied the programs.

Several lectures by Belvidere women have been very interesting. Miss Veva King read a paper on tenement conditions in Chicago; Dr. Annie Alquire talked to the girls on Health; Miss Umbach explained the nature and uses of radium; Mrs. George Pierce delighted the society on the subject of art; Mrs. Alman was heard with pleasure on the same subject; and Miss Juliette Sager is to give us a talk on the drama. This meeting is to be the wind-up of the year.

DRAMATICS.

THE MINSTREL SHOW.

On the evening of the 21st of November, the boys put on a minstrel show at the Opera House. Miss Adams coached the production and managed the entire affair.

The audience was so appreciative and so large that it was an inspiration to the company. As a result of the show, the Seniors added \$25.00 to their treasury and the Athletic Association was richer by \$115. The program was as follows:

First Part.

Edward Benson	Interlocutor
George Silverman	Bob Wright
Elliot Biester	Bernard Smith
John Casey	Cy Atwood
Harold Fischer	Harold Collier
<i>Opening Overture, "ECHOES OF THE PAST," by Entire Company</i>	
Chili Sauce Rag	Cy Atwood
My Dixie Rose	Arthur Warren
At the Levee	Rob Wright
The Boogey Boo Lady	Dewey McCabe
The Brass Band Rag	Cy Atwood
Don't You Cry, Ma Honey	Double Octette
Loyalty Song	Entire Company

Olio

Clog Dance—George Fox, Dewey McCabe, featuring "Molasses Candy."

Louisiana Quartette—Dewey McCabe, Charles Courville, Arthur Warren, Louis Whitney.

Levee Coons	Song and Dance Stunt
Charlie Courville	Elliot Biester
Bernard Smith	Bob Wright
Cy Atwood	Arthur Warren
Dewey McCabe	Edward Benson
"Aero Rag"	Charles Courville

Blackville Justice.

Daff I. Dill	George Silverman
Con M. Along	Bob Wright
Rope M. Inn	Elliot Biester
Wood B. Tuff	Stephen McGonigle
Holdem Up	Edward Benson
Little Phil	Ralph Porter
Officer Pynch	Harold Kizer
Ella Gance	Bernard Smith
Miss Lightfinger	David Melzer
Con D. Rockafellow	Harold Fischer
The Jury.	



PRINCESS CHRYSANTHEMUM.

"Princess Chrysanthemum," the attractive operetta artistically staged and presented at the Opera House, Friday evening, April 17, was a grand success.

The synopsis of the play reveals a plot which, when followed carefully, is quite thrilling, and the Japanese touches given here and there, with the very beautiful costuming, made an altogether pretty scene. The different characters were well sustained, from the rather severe ruler of Japan, Cuthbert Gabel, the pretty little Princess Chrysanthemum, Miss Blanche Sewell, to the rivals for her favor; namely, Prince So Sli, Bernard Smith, and Prince So Tru, Louis Whitney. Miss Iva Colburn as "The Wizard Cat," together with her faithful "Sprites," did some clever work.

Fairies and sprites always add a charm with their strange, mysterious doings and this was surely a delightful addition to the whole. These were children from the second, third and sixth grades.

The High School orchestra, together with special musical numbers, completed a well-balanced production which had been ably coached by Miss Gary.

Beautifully costumed, staged artistically, interpreted with understanding and skill, with solos beautifully rendered and choruses well trained and efficient, "Princess Chrysanthemum" proved to be one of the most successfully presented local talent productions seen in Belvidere for a long time.

Every member of the cast is deserving of praise and credit for the excellence of his work. Emperor What-For-Whi, Cuthbert Gabel, had a splendid role, as also Miss Blanche Sewell in the character of Princess Chrysanthemum, her part being sung with sweetness and much expression. Louis Whitney as Prince So True and Bernard Smith as Prince So Sli did very creditable work, and the principals were ably supported by Miss Iva Colburn as Saucer Eyes, the wizard cat, Miss Hazel Pratt as Fairy Moonbeam, Miss Zina Fry as To-To, Miss Margaret Peale as Yum-Yum, Miss Berneita Moran as Du Du, Miss Ruth Sager as Tu Lip, maidens attendant upon the princess, and Boyd Newman as Top Not, the Court chamberlain.

The chorus was made up of the girls of the glee club and the courtiers were the boys from the Glee club.

Musical Numbers

Act I.

Opening Chorus	Ensemble
Golden Butterfly	Top Not and Ensemble
Wave the Flags and Banner Gay	March and Chorus

Which Shall It Be?	Chrysanthemum and Chorus
Descriptive Scene	So Sli
Long Live the Emperor	Ensemble
I am the Emperor What-For-Whi	Emperor and Ensemble
Finale—Haste Now Away	Ensemble

Act II.

Sprites of the Night	Sprite Chorus
Dance Grotesque	Sprite Chorus
A Kitten's Tale	Saucer Eyes and Chorus
The Path of Love	Fairy Moonbeam
Love's Kingdom	So Tru
Called by Magic Ring, We Come	Fairy Chorus
Finale—Home Returning	Ensemble

Act III.

Sad and Mournful	Ensemble
Swiftly Home Retiring	March and Chorus
Home of My Childhood	Princess Chrysanthemum
Whether You Like it or Not	Emperor and Ensemble
A Jolly Little Japanese Sailor Man	So Sli and Chorus
Umbrella Dance	Sprite Chorus
Dawn of Love, Duet	So Tru and Princess
Finale	Ensemble

THE GIRLS' MINSTREL SHOW.

At the Glee Club party, on December 11th, the girls put on a very clever take-off on the minstrel show. They had worked out the parody themselves and were coached by Miss Adams. The medley "Echoes of the Past" was all of that, for it included "Break the News to Mother," "In the Shade of the Old Apple Tree," and others as well known. The jokes were pointless or stale, the singing excruciating, the tango a scream. Perhaps the cleverest part was the parody on the farce, when Berneita Moran as Judge Whitman declared judgment upon Prof. Cole for embezzling ten cents of the High School funds; upon Mr. Heitter and Miss Gilchrist for tangoing; and upon Harry Bender for holding up Vera Hovey. The lawyers, Iva Colburn and Blanche Sewell, rivalled the originals.

Zina Fry acted as interluctor. Margaret Peale and Iva Colburn were the endmen.

*We're loyal to you, Belvidere,
We're Purple and Gold, Belvidere,
We'll back you to stand 'gainst the best in the land,
For we know you have sand, Belvidere.
Rah! Rah! (yell)
Your sons, brave and tall, Belvidere.
Are backing you all, Belvidere,
Our team is our fame protector
On then, for we expect a victory from you, Belvidere
(Yell)
Che-he! Che-ha! Che-ha-ha-ha!
Che-he! Che-ha! Che-ha-ha-ha!
Belvidere! Belvidere! Belvidere!
Fling out that dear old flag of purple and gold,
Lead on your sons and daughters, fighting and bold,
Like men of old, on giants,
Placing reliance, shouting defiance.
(Yell) Osky-wow-wow!
Amid the broad green plains that nourish our land,
For honest labor and for learning we stand,
And unto thee we pledge our heart and hand,
Dear alma mater, Belvidere!*

Nigga, Nigga, Hot Potata
Half past Allegata
Chickawa da
Belvidere High School,
Rah! Rah! Rah!

Say!
What?
That's what!
What's What?
That's what they all say!
What do they all say?
BELVIDERE!

★Substitute "The team" or call the players.

Hurrah for Mary!
Hurrah for the Lamb!
Hurrah for the Teachers
That don't give a
Hobble, gobble!
Razzel, dazzel
Sip Boom bah!
Belvidere High School,
Bah! Bah! Bah!

Society in Belvidere High School.

*"The world is so full of a number of things,
I'm sure we should all be as happy as kings."*

—ROBERT LOUIS STEVENSON.

Among the many happy memories of our High School life, the various social functions will be remembered as holding an important place in our school interests.

It has pleased us, as students, to know and feel that our faculty has shared these with us, and that we have had their enthusiastic commendation and support.

Each succeeding day brings its new thoughts and duties, so it has seemed fitting that recreation of the proper sort be interspersed among the activities of the B. H. S. It is the pleasant intermingling with others which creates a keener spirit of fellowship and social intercourse between students.

And as the Seniors are to leave the school which has fostered such an enterprising spirit, we trust that the lower classmen will assume the pride of the Senior in keeping our B. H. S. foremost in its rank and standing of scholarship and those interests and requirements which go towards making and keeping the reputation of an excellent school.

The social functions given during the past year may be enumerated as follows:

OCTOBER 31, 1913—A Faculty Halloween Party was given by the teachers of the Washington School. As a masquerade affair, it was unique and clever in every way.

NOVEMBER 7—The Sophomore class spent a social evening at the Masonic Temple. Living moving pictures formed the amusements of the evening. As a social, it was decidedly novel, and was a huge laugh from beginning to end. Refreshments were served.

NOVEMBER 24—The High School Minstrel Show was given at the Derthick Opera House. It was composed of fifty artists who were excellent in their solo and chorus work, while the farce was clever in all respects. Miss Adams deserves much credit for her ability shown as the director and coach.

DECEMBER 9—At this time the faculty enjoyed a Christmas party and a most delicious luncheon. Santa's pre-Xmas gifts were all quite appropriate and caused much merriment.

DECEMBER 11—Our two Glee Clubs entertained at the Commercial Club hall. The minstrel farce "take off" and the folk-games led by Miss Robb were the most attractive features and the faculty were the guests of the evening.

- DECEMBER 24—The German classes celebrated the annual "Weih Nachtsfest." We appreciate the efforts of Miss Graves in always making this such an enjoyable occasion. The Christmas tree with its gifts and the afternoon program were much enjoyed by all.
- FEBRUARY 6-9-10—The Sophomore, Junior, and Senior classes each in turn, enjoyed the sleigh rides which were well chaperoned by members of the faculty.
- FEBRUARY 17—At this time, Mr. and Mrs. Alman acted as hostesses, at their home, to the teachers of the school. Indoor baseball was well carried out and Mr. Heitter's and Reisner's teams showed excellent and careful coaching. The faculty enjoyed a delightful evening.
- FEBRUARY 21.—The Girls' Glee Club entertained at a Colonial Tea, at which time they acted as hostesses to the faculty, parents and patrons of the school. The dances and songs of the grade pupils, together with selections of the orchestra, commemorated in a pleasant way, the birthday of Washington.
- MARCH 21—The Freshmen held a social at the Masonic Hall. Indoor baseball and the dancing of folk-games were participated in by nearly all of the class. Refreshments were served.
- APRIL 17—The pretty Operetta, "Princess Chrysanthemum," was presented at the Opera House by the talent of the Belvidere schools. It was a success in every way and we are glad that we have those who can carry such difficult roles so well.
- APRIL 24—The Senior class gave a masquerade at which the Juniors and Faculty were the invited guests. The costumes were miscellaneous and some quite stunning.
- APRIL 29—The Sophomore class went on a hike after school to the two-and-one-half bridge where they had a picnic supper.

E. W.—1914.

FACULTY HOBBIES.

Mr. Alman	Politics
Miss Graves	Punctuality
Miss Adams	Northwestern
Miss Umbach	A Trip to N. Y. (once in a while.)
Miss Vandervort	Rapidity (in Review.)
Miss Gilchrist	Poe and Hats
Miss Chewning	Atheneums
Miss Harvey	Supervisor of Eighth Period
Miss Wells	Large Eighth Period
Miss Lindquist	To Keep from Blushing
Mr. Heitter	Platform Speeches—Athletics
Miss Lewis	Mud Pies
Miss Gary	Chemistry Lab. Room or Subject?
Mr. Cole	Hoss Races
Miss Fellows	Being Quiet



MEMORIES.

*Faint echoes of the bell that calls
A strange new throng to take our place,
The rush of stranger feet adown those halls
That rang with our retreating pace;*

*And back come memories once more,
Old faces and old friendships true,
Old joys, old tragedies that went before,
The rich glad joy of living that we knew,*

*Old dreams, old plans, old aims we sought,
Fruition measured by the quest
Far more than by the things we wrought;
For in the living came life's best.*

*Faint echoes of the dear old bell,
And back come dreams of school-day strife.
Old memories with which we dwell
Old dreams which taught the way to life.
Ethel Veva King.*

*Fifty Years
From
Commencement
Day.*



ALUMNI DIRECTORY.



SOUTH SIDE GRADUATES.

1876

1. Melissa McClellan (Mrs. Roswell Cook), Long Beach, Cal. c/o Mrs. Boyd Hill.
2. Eva Smedley, 629 Wells St., Chicago, Ill.
3. James Smedley, Chicago, Ill.
4. *Boetious Sullivan.
5. Walter Terry, Sunnyside, Washington.

1877

1. ★Nellie Bowen (Mrs. Fred Hall).
2. Nellie Gray (Mrs. C. M. Gardner) 4711 Greenwood Ave., Chicago.
3. *Fred Smedley.
4. Jesse Hannah, Belvidere.

1878

1. Willis Proctor, 12 Bidwell Park Way, Buffalo, New York.
2. Eugene Patterson, Belvidere.

1879

1. Mary Coleson (Mrs. George Baker), Seattle, Wash.
2. Carrie McCoy (Mrs. Charles Foster) Belvidere.
3. Emma Reynolds (Mrs. Miller), 3003 Military St., Port Huron, Mich.
4. Arthur Waldock.

1880

1. ★Cora Ames.
2. Thomas Hannah, Fort Benton, Montana.
3. Genie King, Belvidere.
4. Winnie King (Mrs. Mark Plane) Belvidere.

1881

1. Mary Brady (Mrs. David O'Brien) Belvidere.
2. Minnie Evans (Mrs. George Woodward) 929 Ridge Ave., Rockford, Ill.
3. Lucius Gould, Teacher, Wisconsin State Normal, Milwaukee, Wis.
4. Chyllene King.
5. Ada Proctor (Mrs. Bishop Butcher) Lahore, India.
6. ★Sydney Sabin.
7. Fannie Wilson (Mrs. Fenn) Englewood, Ill.

1882

1. Gideon Irwin, Chicago, Ill.
2. *Jessie Powers (Mrs. Thomas).
3. Cora Reynolds (Mrs. George Connors) 3003 Military St., Port Huron, Mich.
4. *Frank Smedley.

1883

1. William Biester, Belvidere.
2. Cora Gray (Mrs. Bryant Moseley) 4745 Greenwood Ave., Chicago.
3. *Avis Humphrey, (Mrs. Albert Fuller).
4. Minnie Turner (Mrs. William Biester) Belvidere.
5. Grant Whitney, Room 9, Colorado Bldg., Muskegee, Okla.
6. Hattie Witt, San Simon, Arizona.
7. R. Olin Butterfield, Dr. 1782 W. 25th St., Los Angeles, Calif.

1884

1. Corabelle Clark (Mrs. Arthur Wheeler), Belvidere.
2. Emma Coon (Mrs. Louis Mason) 730 Sheridan Road, Waukegan, Ill.
3. George Greenlee Cortland, New York.
4. Grace Humphrey (Mrs. Thomas Dixon) Belvidere.
5. Mary Humphrey (Mrs. Ray Walworth) Empire, Oregon.
6. Marietta Parkhill (Mrs. Chas. Peale) Belvidere.
7. Will Powers, 1020 Western Ave., Topeka, Kans.
8. Ned Smedley, 629 Wells St., Chicago, Ill.
9. Mattie Wilson (Mrs. W. L. Lovell), Elgin, Ill.

1885

1. Mark Sullivan.
2. Emma Warren, Dr., 629 Wells St., Chicago, Ill.

1886

1. Matae Barr (Mrs. Will Phillips) Belvidere.
2. Jennie Bennett (Mrs. Olney Witbeck) Belvidere.
3. Eliza Bryden, Rockford, Ill.
4. *Fred Evans.

5. Mattie Greenlee (Mrs. David Greenlee) Belvidere.
6. Minnie Lincoln (Mrs. Thomas Humphrey) R. R. 2, Belvidere.
7. Frank Powers (Mrs. Myron Hammond) R. R. 4, Belvidere.
8. Minnie Starr (Mrs. E. J. Grainger) Belvidere.
9. *Lizzie Shannon (Mrs. Gray).
10. Mary Sabin (Mrs. Fred Houston) Rockford, Ill.
11. Lizzie Sullivan, 106 N. La Salle St., Chicago, Ill.
12. Fred Sager, 435 Skokie Road, Glencoe, Illinois.

1887

1. Lizzie Burton (Mrs. A. S. Mason) Patterson, Cal.
2. Nellie Dawson (Mrs. Thomas Burton) 1138 N. Main St., Rockford, Ill.
3. *Annie Hovey (Mrs. John Fair).
4. Russ Lampert, Sumas, Washington.
5. Mary Murrin (Mrs. John Carey) Chicago, Illinois.
6. Hattie Tucker (Mrs. Floyd Smith), Belvidere.
7. Eliza Wilson.

1888

1. Minnie Adams (Mrs. Cassius Church), Belvidere.
2. Frank Covey, Belvidere.
3. Nettie Hill (Mrs. S. W. Sussex), Highmore, South Dakota.
4. Mary Harvey (Mrs. James Gibson), R. R. 1, Belvidere.
5. Ella Hakes (Mrs. Chas. Partlow), 321 Ashland Ave., La Grange, Ill.
6. William Keator, R. R. 1, Belvidere, Ill.
7. ★Charles Lincoln.
8. Warren Lampert, R. R. 1, Belvidere.
9. Nellie Osborn (Mrs. Floyd Pierce), Parsons, Kans.
10. Juliette Sullivan, Los Angeles, Cal.
11. Bert Wilson, 400 Ashland Blk., Chicago, Ill.

1889

1. John Burns, Chicago Office Election Board, Chicago, Ill.
2. Cora Coultrup (Mrs. Ira Voorhus), Belvidere.
3. Lizzie Greenlee (Mrs. Elmer Watkins), Belvidere.
4. Clara Ingalls.
5. Lide McMullen (Mrs. Jas. James)

- 328 W. 6th Ave. Gary, Ind.
6. Julia Schuladen (Mrs. H. Green) 533 N. Austin Ave., Oak Park, Ill.
7. Juliette Sager, Belvidere.

1890

1. Maud Ames (Mrs. Robt Dennison), 116 Erwin St., Tyler, Texas.
2. Lillian Bassett, (Mrs. Myron Marshall), Emerson Ave., Beloit, Wis.
3. *John Butterfield.
4. J. Kyle Graves, Belvidere.
5. Wilma Kellar.

1891

1. Elliott Andrews, Belvidere.
2. Nellie Bennett (Mrs. W. J. McMoran) 503 N. 4th. St., North Yakima, Wash.
3. Kate Calahan (Mrs. Otto Schmidt) R. R. 1, Willow Lake, S. Dak.
4. Ira Covey, 526 Lynn Ave, Peoria, Illinois.
5. Hattie Elliott (Mrs. Will Deutsche) Seattle, Washington.
6. Elizabeth Harvey, Belvidere.
7. Frankie Meyers (Mrs. Fred Black),
8. Sarah O'Donnell (Mrs. Harry Pierce), Belvidere.
9. Grace Parker, 43, South Eighth St., San Jose, California.
10. Matie Richardson (Mrs. Harry Meek), 111 Yeager St., Napoleon, Ohio.
11. Lucy Spencer, Irving Park, Chicago, Ill.

1892

1. Nellie Adams, Belvidere.
2. Mary Hakes (Mrs. Ralph Sears), 1404 Bragdon Ave., Pueblo, Colorado.
3. Allie Munn, Belvidere.
4. Carrie Norton (Mrs. A. O. Wilson), Belvidere.
5. Garnet Parker (Mrs. Harry Collier), Belvidere.
6. Nellie Sager (Mrs. Will Craven), Memphis, Texas.
7. B. C. Shannon, Gladstone, Minnesota.

1893

1. Alice Barney.
2. ★Jennie Beckington.
3. Stella Bennett, 2530 Chilton Way, Berkley, California.
4. Agnes Calahan (Mrs. John Richards.)

5. Maud Chamberlain (Mrs. Frank French), 481 Division St., Elgin, Ill.
6. Adelbert Covey, 423 Peoria Ave., Peoria, Ill.
7. Mamie Dean (Mrs. Will Fair), Belvidere.
8. Rose Lincoln (Mrs. Will Hill), Jerome, Idaho.
9. Glenn Pettit, 2325 S. 33rd St., Omaha, Nebraska.
10. Charles Roach, Denver, Colorado.
11. Charles Scott, Dr., Twin Falls, Idaho.
12. Emma Spackman (Mrs. E. E. Simpson) 1718 La Salle Ave., Chicago, Ill.

1894

1. William Hancock, 4584 Pasadena Avenue, Los Angeles, California.
2. Cora King. (Mrs. A. Swain) 1868 Allsander St., Edendale, Los Angeles, Calif.
3. *Gertrude Neff (Mrs. Burton).
4. George Richardson, Belvidere.
5. Cora Styles.

1895

1. Hugh Dysart, Belvidere.

1896

1. Thomas Beckington, Belvidere.
2. Nelva Dean, 315 S. Ashland Blvd. Chicago, Ill.
3. Flora Dixon (Mrs. C. C. Hutches) Braden Town, Florida.
4. Edna Grummond, Belvidere.
5. Emogene Peck (Mrs. Fred Pettit), Rockford, Washington, R. 1.
6. Mabel Traver (Mrs. James Ellis), Belvidere.

1897

1. Wilmina Case.
2. Mira Delavergne (Mrs. J. A. Kipple), Belvidere.
3. Ella Harding (Mrs. William Goudy), Avonmore, Pa.
4. Clara Keator, Belvidere.
5. Myrtle McMullen (Mrs. Boyd Hill), Long Beach, Cal.
6. Cora Richardson (Mrs. Robert Heller), Elgin, Ill.

1898

1. Andrew Barney.
2. Emory Bogardus, University of California, Los Angeles, California.
3. Mabel Cowan.

4. Birdena Dunbar (Mrs. Frank Marietti), R. R. 1, Caledonia, Ill.
5. Fred Gill, 78 Peabody Place, Newark, New Jersey.
6. J. Albion Hammond, Belvidere.
7. Charles Harvey, Belvidere.
8. *Boyd Hill.
9. *Ben Murrin.
10. Frank Shattuck, Belvidere.
11. Myrtle Tallerday, Belvidere.
12. Mamie Wilson, Chicago, Ill.
13. Thomas Wilson, New York City, N. Y.
14. *Mabel Woods.

1899

1. Harry Armington, Sycamore, Ill.
2. Katherine Burns, 5622 Grove Ave., Chicago, Ill.
3. Mary Chena (Mrs. Hartwick), Rockford, Ill.
4. Francis Conley (Mrs. James Whalen), Argyle, Illinois.
5. Barney Conwell.
6. Ida Curtis.
7. Mattie Hewitt, Belvidere.
8. Mildred King (Dr. Kleutzen), 903 W. Garfield Blvd., Chicago Ill.
9. Fred Lewis, 1636 Fargo Ave., Chicago, Ill.
10. Alice Lucas.
11. Hattie Newman, Belvidere.
12. Jessie Shannon, Lake Geneva, Wisconsin.
13. Rubie Taplin (Mrs. Harry Armington), Sycamore, Ill.
14. *Jessie Wing.

1900

1. Phil Arbuckle, Houston, Texas, teacher, Brice Institute.
2. Charles Brooks, Belvidere.
3. *Joe Burns.
4. Susie Burns (Mrs. Patrick O'Donnell), Belvidere.
5. Ada Butterfield (Mrs. Fred Ranger), Belvidere.
6. Charles Butterfield, 4660 18th St., San Francisco, California.
7. Frank Clayton, Meadville, Penn.
8. Charles Goodrich, Majestic Hotel, Atlanta, Ga.
9. Willis Griffith, Belvidere.
10. Alice King, (Mrs. Leslie Porter), Belvidere.
11. Lila Lewis, Belvidere.
12. Michael O'Donnell, N. Y. Life Bldg., Kansas City, Missouri.
13. *Lee Porter.
14. Leslie Porter, Belvidere.
15. Irene Sage (Mrs. Henry Peters),

1145 Fifteenth St., Moline, Ill.

16. Vina Spackman (Mrs. Paul Schultz), 750 St. Louis Ave., Chicago, Ill.
17. Wallace Streeter, J. Ham Lewis Law Office, Chicago, Ill.
18. Joe Sullivan, 354 Pacific Electric Blvd., Los Angeles Cal.
19. Bert Thorn, 1111 Blaisdell St., Rockford, Ill.
20. Willie Waugh, R. R. 2, Belvidere.
21. Walter Yourt, 2240 Crinshaw Blvd., Los Angeles, Cal.

1901

1. Ralph Beckington, Brown Bldg., Rockford, Ill.
2. Bessie Bennett, 301 Elm Ave., Pasadena, Calif.
3. Nellie Brush (Mrs. Howard Bruner), 1615 Elm St., Rockford, Illinois.
4. Nettie Brush (Mrs. H. L. Dunn-ing), Hebron, Ill.
5. Howard Bruner, 1615 Elm St. Rockford, Ill.
6. Charles Chaffee, Rockford, Ill.
7. Lela Cook (Mrs. Walter Sabin), 1117 Patton St., Memphis, Tenn.
8. Katherine Curran (Mrs. Edward Piel), Belvidere.
9. Cora Davis.
10. Blanche Diamond.
11. Georgiana Hicks.
12. Pearl Horan (Mrs. J. F. Smith), Belvidere.
13. Lawrence Keeler, Los Angeles, Cal.
14. *Maud Kimmey.
15. Ethel Kipp (Mrs. M. E. Smith), Port Gambol, Washington.
16. Grace Lincoln (Mrs. Fred Eldredge), Belvidere, Illinois.
17. Blanche Marean, Belvidere.
18. Louis Marean, Belvidere.
19. Iva Moore (Mrs. Willis Griffith), Belvidere.
20. Wayne Munn, Dr., Janesville, Wis.
21. Lulu Oaks (Mrs. Herbert Hakes) Bingham Lake, Minn.
22. Carl Shattuck, Belvidere.
23. Carrie Shattuck, 3361 West Monroe St., Chicago, Ill.
24. Dawn Waite (Mrs. Evan E. Young), 91 English St., Halifax, Nova Scotia.
25. Lucy Welch (Mrs. Lewis Smith), Capron, Ill.
26. Mattie Wing, Belvidere.

27. Myrtle Woodward (Mrs. Clarence Bailey), Red Cloud, Neb.

1902

1. Fred Armington, Chicago, Ill.
2. Irving Banwell, Belvidere.
3. Elmer Bassett, Indianapolis, Ind.
4. Jettie Berg.
5. Waldo Ekeberg, Peoria, Ill.
6. Agnes Hamill.
7. Winnie Morse (Mrs. Ralph Mackey), Belvidere.
8. Ora Morgan (Mrs. Elmer Penny), Belvidere.
9. Ralph Pratt, R. R. 2, Belvidere.
10. Florence Vincent, Belvidere.
11. Gertrude Watkins (Mrs. Fred Armington), Chicago, Ill.
12. Kittie Wheeler, (Mrs. Ernest Diamond), Chicago, Ill.
13. Bertha Woods, Belvidere.

1903

1. Clara Barney.
2. Charles Bassett, Delano, California.
3. Lillian Coleson (Mrs. Geo. Taylor), Winters, Yolo County, Cal.
4. Clara Conklin (Mrs. Floyd Ray), Vincennes Ave., Chicago, Ill.
5. Grace Ellis.
6. Eva Hull, 2347 Ridge Ave., Evanston Ill.
7. Vera Laing, Belvidere.
8. Olive Lanning (Mrs. J. F. Allison), Granville, North Dakota.
9. Hugh O'Donnell, Belvidere.
10. Dudley Richardson, Belvidere.
11. Mayme Scanlan, Belvidere.
12. Ida Swail, 322 Kembroke Ave., Norfolk, Va.
13. Lottie Tallerday (Mrs. Walter E. Hall) 159 N. Austin Ave, Austin, Ill.
14. May Thomas, Belvidere,
15. Edward Wheeler, Belvidere.

1904

1. Elsie Ekeberg, ———, Michigan.
2. Versa Hopper.
3. Harold Johnson, Powell, Wyoming.
4. Bernice Kimmey, (Mrs. George Ferney), St. Anthony, Idaho.
5. Ruby Lanning (Mrs. Herbert Lundgren) 112 Buckbee Street, Rockford.
6. Mary Luhman Mrs. Clarence Dale), Milan, Michigan.
7. Lauretta McKenna, Belvidere.
8. Blanche Morse (Mrs. ——— Blaine), Toronto, Canada.

9. Ethel Shattuck, Belvidere.
10. Florence Wakefield, (Mrs. Clyde Vincent), Belvidere.
11. Flora Webber, Mrs. Theodore Haack), Belvidere.

1905

1. Grace Austin, 1767 Mineral St., Milwaukee, Wis.
2. Lulu Beckington, Belvidere, teacher, Maywood, Illinois.
3. Nellie Case, Chicago, Ill.
4. Vera Colvin, Belvidere.
5. Ray Conley, R. R. 2, Belvidere.
6. Marr Cowan (Mrs. Guy Silvius), Belvidere.
7. William Georgian, Chicago, Ill.
8. Homer Hall, Belvidere, Teacher R. H. S. Rockford, Ill.
9. Pearl Kepple (Mrs. Chas. Miller), 1596 E. 118th St. Cleveland, O.
10. Veva King, Belvidere.
11. Bertha List, Belvidere.
12. George Luhman, Caswell Bldg., Milwaukee, Wis.
13. Neenah White (Mrs. Chas. Trueblood), Seward, Ill.

1906

1. Florence Curran, Belvidere.
2. Irene Difford, Belvidere, teacher Indianapolis, Indiana.
3. Luella Goodrich (Mrs. Robt. McInnes) 4452 Winchester Ave., Chicago, Ill.
4. Leo Kelley, Faith, South Dakota.
5. Lola Kelley (Mrs. Frank Smith), Nashville, Tenn.
6. *Florence Marshall.
7. Pearl Norton (Mrs. George Fellows), R. R. 2, Rockford, Ill.
8. Minnie Sexauer, Belvidere, teacher, Omro H. S., Omro, Wis.
9. Anna Shanesy, (Mrs. Edward Wheeler), Belvidere.
10. Markella White, Garden Prairie, Ill.
11. Elsie Wrate (Mrs. Ezra Greenslit), R. R. 6, Belvidere.

1907

1. Bernard Brady, Belvidere.
2. Zora Bruce, Belvidere.
3. Ada Burton (Mrs. Leslie McNeil) Kirkland, Ill.
4. Belle Clark, Belvidere.
5. Ida Cook, Belvidere.
6. Faye Fulkerson, Teacher N. H. S., Negaunee, Mich.

7. Margaret Harvey, Belvidere.
8. Cora Kennedy, Belvidere, teacher, Great Falls, Mont.
9. Bessie Kimmey (Mrs. Harry Brown), Belvidere.
10. Myrtle Rix, (Mrs. ——— Switz), R. R., Belvidere.
11. Maynard Slater, Belvidere, Student U. of I., 3rd year.
12. Agnes Sutton, R. R. Marengo, Ill.
13. Hazel Swail, Belvidere.
14. Faye Taylor, Belvidere.
15. Ida Thrush, Belvidere.
16. Gertrude Tynan, Chicago, Ill.
17. Cleona Watts (Mrs. Earle Griffiths), R. R. Poplar Grove.

1908

1. Fred Bennett, R. R. 1, Belvidere.
2. Fannie Butterfield, Belvidere, teacher, Webster Grove, Mo.
3. Wallace Difford, Liberty, Texas.
4. Robert Hannah, c/o Y. M. C. A., Aurora, Ill.
5. Vera McKenna, Chicago, Ill.
6. Jacques Penning, Belvidere.
7. Dora Sippel (Mrs. Chas. Vogel), West Chicago, Ill.
8. Charles Tullock.
9. Elmer Webber, Chicago Ill.
10. Mattie Yeager, (Mrs. Fred Bennett, R. R. 1, Belvidere.

1909

1. Percy Bogue, Belvidere.
2. Eloise Campbell, Belvidere.
3. Oliver Cornell, Belvidere.
4. Frank Downs, Belvidere.
5. Marian Durand, Belvidere.
6. Harry Fuller, Chicago, Ill.
7. Helen Johnson, Belvidere, teacher, Shabbona, Illinois.
8. Victoria Johnson, Belvidere.
9. George King.
10. Alice Loy, Lebanon, teacher Blue Mound, Ill.
11. Hazel Markley, Belvidere.
12. Gilbert Marshall, Belvidere.
13. Minnie McCartney, Belvidere.
14. Julia Meyers, Belvidere, teacher Chicago School of Physical Culture.
15. Pauline Penning, Belvidere.
16. Harry Perlet, 3030 Fulton Street, Chicago, Ill.
17. Clara Peterson, Dixon, Ill.
18. Iola Pierce, 117 South Galena Avenue, Freeport, Ill.

19. George Porter, Rancagua, Chili, South America.
20. Richard Poulton, Belvidere, Student at Kent Law School, 4th year.
21. Bernice Roach, Kirkland, Ill.
22. Lottie Saladee, Belvidere.
23. Fred Sexauer, Belvidere.
24. Ralph Shanesy, Belvidere, student N. W. U. Law school.
25. Harriett Stowe, Belvidere.
26. Belle Tripp, Belvidere.
27. Jennie Tripp, Belvidere, teacher Shabbona, Ill.
28. Nora Vandewalker, Belvidere.
29. Richard Whitney, 1113 Ayres place, Evanston, Illinois.
30. Mildred Wyman, 821 Sixteenth St. Des Moines, Iowa.
31. Mabel Yates, R. R. 2, Belvidere.

1910

1. Esther Bennett, R. R. 1, Belvidere.
2. Virgil Brady, Belvidere.
3. Blanche DeWolf, Belvidere.
4. May Difford, Scranton, Iowa.
5. Glenn Hammond, Belvidere.
6. Leah Kiester, Dixon, Ill.
7. Arthur Maynard, Belvidere.
8. Clifford May, Belvidere, Student U. of I. 1st year.
9. Omar McDougal, Belvidere, Student Rockford Business college.
10. Alta Miller, Belvidere.
11. Fern Newton (Mrs. Adrian Earl) Drexel Blvd. Chicago.
12. James O'Brien, Belvidere.
13. Ethel Packard, Los Angeles, California.
14. Bonnie Peck, Belvidere.
15. Paul Pritchard, R. R. 6, Harvard, Illinois.
16. Anna Sager, R. R. 2, Belvidere, teacher Boen, Illinois.
17. Fred Sands, San Antonio, Texas.
18. Agnes Scott, Marengo, student Wooster College, (Ohio) 4th year.
19. Harold Woleben, c/o Y. M. C. A. Duluth, Minn.

1911

1. June Barber, Belvidere, teacher Riverforest, Chicago, Ill.
2. Ralph Bogue, Belvidere.
3. William Burns, Belvidere.
4. George Clark, Belvidere, student N. W. U., 1st year.
5. Ruth Campbell, Belvidere.
6. Adelaide Comstock, Chicago, Ill.

7. Mae Delavergne, 3711 Colorado Ave, Chicago Ill.
8. Hazel Difford, 116 South Michigan Ave., Chicago Ill.
9. Phyllis Hendrickson (Mrs. Irving Barr), Belvidere.
10. Avis Humphrey, R. R. 1, Belvidere.
11. Gladys Forrer (Mrs. Wallace Difford) Liberty, Texas.
12. Edward Kennedy, Belvidere.
13. Alta Kiester, Garden Prairie, teacher, Belvidere, Ill.
14. Mary Laing, Belvidere.
15. Fern Loing, Belvidere, student U. of I. 3rd year.
16. Iva McCartney (Mrs. George Crowell), 1103 West State St., Rockford.
17. Marguerite Moore, Herbert, Ill.
18. Arthur Peterson, Belvidere.
19. Gladys Porter, Garden Prairie.
20. Harry Porter, Garden Prairie, Ill.
21. Amy Ritchie, Belvidere.
22. Edna Roper, (Mrs. Clinton Hendrickson), Garden Prairie.
23. Florence Rote, R. R. 2, Capron, Ill.
24. Potter Sabin, Rockford, Ill. student N. W. U. 2nd year.
25. Frank Sager, R. R. 2, Belvidere.
26. Charles Saladee, Belvidere.
27. Mae Sexauer, Belvidere, student U. of I. 3rd year.
28. Bernice Shattuck, Belvidere.
29. Julius Silverman, Belvidere.
30. Irving Smith, Belvidere.
31. Wayne Wright, Garden Prairie,

1912

1. Charles Adams, Belvidere.
2. Grace Ahlsen, Belvidere.
3. Rose Allen, Belvidere.
4. John Boyce, 3030 Fulton St., Chicago, Ill.
8. Alice Cornell, Belvidere.
6. Ella Dale, Belvidere.
7. J. P. Dwyer, Belvidere.
8. Walter Frederickson, Garden Prairie.
9. Emma Gallagher, Belvidere.
10. Vera Garrett, Belvidere.
11. Pauline Goodrich, Belvidere, student, Lake Forest College, 1st year.
12. Ethna Hubbard, Belvidere.
13. Blanche Lampert, R. R. 1, Garden Prairie.
14. Nellie Latt, R. R. 1, Belvidere.
15. John Luhman, Belvidere.

16. Tracy McCracken, Belvidere, student U. of Wyoming, 1st year.
17. Viva McDougal, Belvidere, Student DeKalb Normal, 2nd. year.
18. Vera Menzel(Mrs. James Cornell, Jr.) 2036 Cullom Ave., Chicago, Ill.
19. Le Vera Merrill, Belvidere.
20. Harold Packard, Los Angeles, California.
21. Mae Partridge, Belvidere, student De Kalb Normal, 1st year.
22. Estella Paulson, R. R. 1, Kirkland Illinois.
23. Gertrude Pettit, Belvidere, student, De Kalb Normal, 1st. year.
24. Beth Petty, Belvidere.
24. Clara Porter, 312 W. Grove Ave. Oak Park, Ill., student Art Institute, Chicago.
26. Lynn Porter, Garden Prairie, Ill.
27. Webster Porter, Belvidere, student U. of I. 2nd year.
28. Alversa Rote, R. R. 2, Capron, Illinois.
29. Lila Rudolph, Belvidere.
30. Flay Sargent, R. R. 1, Belvidere.
31. Mary Sullivan, Belvidere.
32. Harold Swift, Belvidere, student N. W. U., 2nd year.
33. Charlotte Thomas, Belvidere.
34. Jennie Teeple, Belvidere, student Lombard college, Galesburg, 2nd year.
35. Lola Vincent, Belvidere.
36. Irene Walquist, Belvidere.
37. John White, Chicago, Illinois.
38. Leo White, Chicago, Ill.
39. Lela Whitney, Belvidere.
40. Bernice Wright, Garden Prairie, student U. of C., 1st year.



NORTH SIDE GRADUATES.

1877

1. Flora Fellows, Belvidere.
2. Hattie Foote (Mrs. David D. Sabbin), Belvidere.
3. Calvin May, Clinton, Iowa.
4. *Charles Whiting.

1878

1. Ella Hollenshead, Belvidere.
2. Kate Mudge, Redlands, California.
3. Lulu Nixon (Mrs. Charles Keeler), 2318 Glen Ave., Berkeley, Calif.
4. Alice Terwilliger (Mrs. Jacob Mable), ———, Florida.
5. George Van Atten, Highmore, S. Dak.

1879

1. John Lathrop, 342 E. North Water St., Chicago, Ill.
2. Edward Swazey, Dow City, Iowa.
3. *Douglas May.

1880

1. *Addie Frye.
2. Jessie Frye, Alaska Bldg., Seattle Wash.
3. Albert Loop, Belvidere.
4. Frank Sherrill, 4423 Jefferson St., Kansas City, Mo.
5. *Cena Becknell.

1881

1. Alice Covey, (Mrs. George Covey), Belvidere
2. Alice Bennett (Mrs. — Morey), Quarry St., Rockford.
3. Kate Foote, 18 W. Delaware Pl., Chicago, Ill.
4. Alice Fox, Belvidere.
5. William Milmine, Belvidere.
6. Mary Swail (Mrs. — — Taft), Foresthill Gardens, N. Y.
7. Edna Taylor (Mrs. — — Miller), 448 N. Carpenter St., Chicago.
8. Lizzie White (Mrs. — — Sharp), Lakehurst, N. J.

1882

No class this year.

1883

1. Carrie Bement (Mrs. Justin Patterson), Pamona, Calif.
2. Orrie Chase, 721 Hope St., Los Angeles, Calif.
3. Clara Fox, Seattle Wash.
4. Bertha Loop, Belvidere.
5. Francis Rogers, 821 Hovey St., Rockford, Ill.
6. Libbie Whitman (Mrs. Millard Boyce), Belvidere.

1884

1. Edward Barnes, 681 Walnut St., Chicago, Ill.
2. Grace Hollenshead, Belvidere.
3. Alice Rudd (Mrs. Charles Prout), Wheaton, Ill.
4. Alice Warren (Mrs. George Jones), Belvidere.

1885

1. Mary Benson (Mrs. Irwin Nye), Detroit, Mich.
2. Mary Foote, Belvidere.
3. Blanche Gould, Belvidere.
4. Nellie Greenlee, Belvidere.
5. Martin O'Brien, Crookston, Minn.

1886

1. Cora Benson, 4710 Kenmore Ave., Chicago, Ill.
2. Sarah Burton (Mrs. Abner Wakefield), Belvidere.
3. Maggie Curtis (Mrs. Dock Shattuck), Frederick, S. Dak.
4. Mary Devlin, Belvidere.
5. Gertrude De Munn, (Mrs. John Innes), 3038 Fulton St., Chicago.
6. Nettie Fellows (Mrs. E. F. Long), Poplar Grove, Ill.
7. Cora Gray (Mrs. David Patton), Belvidere.
8. Jessie Gray (Mrs. James Patton), 506 Central Park Ave., Chicago.
9. Jane Hubbell, Rockford, Ill.
10. Helen Keeler (Mrs. Herbert Toulouse) 1130 South Hope Street, Angeles, Cal.
11. Carrie Swail (Mrs. Russ Lampert), Sumas, Wash.
12. Flora Tobyne (Mrs. Samuel Walker), Debeque, Colo.

1887

1. William Cleveland, Sommerville, New Jersey.
2. William Greenlee, Belvidere.
3. Nell Peabody, (Mrs. George Peabody), Phoenix, Ariz.
4. May Hulings (Mrs. F. W. McNamara), 4413 Calumet Ave., Chicago.
5. Gertrude Lawrence (Mrs. William Peake), 262 Shafter Ave., Oakley, Calif.
6. Bessie Leach (Mrs. F. E. Preddy) 124 N. Maume St., Adrian, Mich.
7. Gertrude Pepper (Mrs. — — Briggs), Belvidere.
8. May Pierce (Mrs. William Waite) Geneva Lake, Wis.

9. Susie Pinkham (Mrs. — — Morrison), 1301 Daviess St., Owensboro, Ky.
10. Clinton Smith, San Jose, Cal.

1888

1. Lloyd Cochran, Drocton, Mass.
2. Lena Gaylord, Belvidere.
3. Elizabeth Greenlee, Belvidere.
4. Charlotte Lawrence, R. R. 1, Belvidere.
5. Carrie Rundell (Mrs. John Cleaver), Belvidere.
6. Nellie Mabie (Mrs. — — Kleasner), Belvidere.

1889

1. Will K. Foote, Dr., 1311 35th St., Omaha, Neb.

1890

1. Boyd Andrews, Dr., Belvidere.
2. George Campbell, Peoria, Ill.
3. Ernest Downing, Chicago, Ill.
4. Margaret Deylin, Belvidere.
5. Amy Feaks (Mrs. John Petty), Belvidere.
6. Nellie Mabie (Mrs. — — Steadler), E. Northfield, Mass.
7. June Pierce (Mrs. Edward Robertson), Belvidere.
8. Louise Lawrence, Belvidere.
9. Elmer Smith, 1013½ Green St., San Francisco, Cal.

1891

1. Georgia Campbell (Mrs. Ernest Wheeler), Belvidere.
2. Ella Downing (Mrs. Will Foote), 1311 35th., Omaha, Neb.
3. James Fellows, Milwaukee, Oregon.
4. Hattie Hopkins, Belvidere.
5. Max Kunze, Ingo Co., Bishop, Cal.
6. Maude Merrill (Mrs. Harry Curtis), 524 S. 11th., Fargo, N. Dak.
7. Anna Rundell, Belvidere.
8. ★Marie Sturtevant (Mrs. — — Blackington).

1892

1. Anna Bennett Fansworth, Dr., c/o Sanitarium, Chamberlain, S. Dak.
2. Dessie Bridges, Belvidere.
3. Frank Campbell, Rockford, Ill.
4. Ruth Colvin (Mrs. Robert Wilson), Sherman Ave., Evanston, Ill.
5. Iolene Hollenshead (Mrs. Elmer Smith), 1013½ Green St., San Francisco, Cal.

6. Alta Lennel (Mrs. Ira Covey),
600 Lynn St., Peoria, Ill.
7. Fred Morgan, Dr., Cornell, Ill.
8. Florence Murphy, Sonoma, Calif.

1893

No class this year—Changed from a
3 to a 4 year course.

1894

1. Mabel Jaffrey (Mrs. — — Shef-
field), Aurora, Ill.
2. Charles Sewell, Belvidere.
3. Bertha Whitman (Mrs. John C.
Plane), Belvidere.

1895

1. Jessie Benson, 4710 Kenmore
Ave., Chicago, Ill.
2. Elgie Bridges (Mrs. James Nott),
Belvidere.
3. Anna Bowman, 832 E. 39th St.,
Chicago, Ill.
4. Nell Curtis, Belvidere.
5. Blanche Cleveland, (Mrs. Charles
Wilson), 2486 E. 61st St., Cleve-
land, Ohio.
6. Blanche Downing (Mrs. Glenn
Pettit), Wheaton, Ill.
7. Millicent Hicks, Belvidere.
8. Mame Hicks (Mrs. Clarence),
Woods, Belvidere.
9. Lulu Incledon (Mrs. George Sag-
er), Memphis, Texas.
10. Blanche Merrill (Mrs. Dufay Full-
er), Belvidere.
11. Daisy Sterling (Mrs. Arthur Van
Epps), R. R. 4, Belvidere.
12. Maud Stockwell (Mrs. Charles
Slater), Belvidere.
13. Stephen Hurlbut, abroad.
14. Edward Thompson, 1621 Madison
St., Denver., Colorado.

1896

1. Elizabeth Ballard, Belvidere.
2. Alice Curtis (Mrs. Frank Gould),
Galesburg, Ill.
3. Florence Foote, (Mrs. E. W. Eng-
strom), 210 N. Wyman St., Rock-
ford, Ill.
4. Ralph Herbert, Dr., 427 Main St.,
La Crosse, Wis.
5. Emma Keeler, Belvidere.
6. Linah Kunze (Mrs. Kirby Fos-
gate), Hollister, Cal.
7. Bertha Linnel (Mrs. Jas. Gough),
R. R. Belvidere.
8. Harriett Longcor (Mrs. Frank
Covey), Belvidere.

1897

1. Ralph Brown, Belvidere.
2. Hattie Gough (Mrs. R. M. War-
wick), 6246 Jackson Park Ave.,
Chicago, Ill.
3. Marian Haskins, Belvidere, teach-
er.
4. Martha Lindquist, Belvidere.
5. Jennie Sherrill, Whitewater, Wis.
6. Francis Terwilliger (Mrs. Ralph
Brown), Belvidere.
7. Blanche Truesdell (Mrs. G. C. De-
Graw), 404 Madison St., Port-
land, Ore.

1898

1. Sadie Gough (Mrs. R. T. War-
wick) 1158 Indiana Ave., Tole-
do, O.
2. Eva Sterling (Mrs. Frank Peaise)
R. R. Belvidere.
3. Frank S. Whitman, Dr., 144 N.
Main St., Wichita, Kansas.

1899

1. Lillian Barmore (Mrs. Nelson
Johnson), ———, Canada.
2. Grace Cleveland (Mrs. Charles
Goodrich) Majestic Hotel, Atlan-
ta, Ga.
3. Louis Cronk, ———, Calif.
4. May Greenlee, Belvidere.
5. Alice Humphrey, 223 E. 3rd. St.,
Pomona, Calif.
6. William Hyde, Castle Rock, Wash-
ington.
7. Anne Merriett (Mrs. Brady Simp-
kins), Eldorado, Kans.
8. Cora Terwilliger, Belvidere.

1900

1. Harry Ballard, Los Angeles, Cal.
2. Claude Ardery, Marmarth, N. D.
3. ★Susan Barnes (Mrs. Theodore
Peterson)
4. Ida Church, (Mrs. Ide Early),
Belvidere.
5. Irene Froom, (Mrs. John Van
Dyke), Danville, Wash.
6. Ruby Cronk (Mrs. Clinton De
Wolf), Chicago, Ill.
7. Fred Keeler, 209 Callender Ave.,
Peoria, Ill.
8. Frank Morgan, Dr., Onarga, Ill.
9. John Sexauer, New York City, N.
Y.
10. Henry Thompson, Belvidere.
11. Maude Haskins (Mrs. Claire Ell-
iott), Belvidere.

1901

1. Lila Barker (Mrs. Ralph Bowdish), 427 Ave. A. Wichita, Kan.
2. Ralph Bowdish, 427 Ave. A, Wichita, Kan.
3. Georgia Brown (Mrs. Thomas Sullivan), Belvidere.
4. Emma Doll, Garden Prairie, Ill.
5. Forest B. Johnston, Rector, Marion, Ind.
6. Frank Lindquist, Aurora, Ill.
7. Elsie Luce, 912 Gaffield Place, Evanston, Ill.
8. Roy Mallory, R. R. 2, Fenville, Mich.
9. Lulu Marriett (Mrs. Clarence Winnie), Belvidere.
10. Catherine McCarthy (Mrs. Shackell), Poplar Grove, Ill.
11. Effie Spencer (Mrs. Lewis Wheeler), 1425 Pacific Ave., Los Angeles, Calif.
12. Ethel Strong, Belvidere.
13. Alice Tobyne (Mrs. George Fitch) R. R. Belvidere.
14. Ethel Truesdel, Belvidere.
15. Ida Van Epps, Belvidere.
16. Anna Wallace (Mrs. Will Hyde), Castle Rock, Washington.
17. Lewis Wheeler, 1425 Pacific Ave. Los Angeles, Cal.
18. Nora Wicks (Mrs. Strong Rollo), Belvidere.

1902

1. Nettie Bennett, R. R., Belvidere.
2. Grace Chapman (Mrs. Charles Doll), R. R., Belvidere.
3. Allie Countriman, Muscatine, Ia.
4. Bessie Eldredge (Mrs. Ralph Cook 440 Maple Ave., Oak Park, Ill.
5. Iva Hammond, Belvidere.
6. Mary Linton, Joliet, Ill.
7. Glenn Morgan, 1058 Linwood Pl., St. Paul, Minn.
8. Belle Newton, Belvidere.
9. Anna Richardson, (Mrs. — — Moan), R. R. 4, Howard, S. D.
10. Josephine Sherrer (Mrs. George Harley), 474 Central Ave., Alameda, Cal.
11. Grace Thompson (Mrs. — — Goodrich), Marengo, Ill.
12. Clifton Wheeler, c/o Dunlap Drug Store, Beaumont, Texas.
13. I. T. Witbeck, 1013 Nelson St., Vancouver, B. C.
14. Lilley Young, Lancaster, Wis.

1903

1. Ethel Barney (Mrs. George McCabe), 458 12th Ave., Milwaukee, Wis.
2. Verna Cleveland, (Mrs. Edward Allen), 516 N. Horsman Ave., Rockford, Ill.
3. Damon Cummings.
4. Nettie Erwin (Mrs. Louis Covey) R. R. Poplar Grove, Ill.
5. Lydia Forsythe, Belvidere.
6. Mabel Houdeshell (Mrs. — — Field), 618 Hulin St., Rockford, Ill.
7. Avice Luce (Mrs. Guy Hubbard), 912 Gaffield Place, Evanston, Ill.
8. Clara Ross (Mrs. Charles Huber) Belvidere.
9. Ruth Saxton (Mrs. Nelson Wilcox), Belvidere.
10. Leon Tripp, Belvidere.
11. Dan Warren, R. R. Belvidere.
12. Maude Willard, Belvidere, teacher, McKendree College.
13. Herman Williams, Minneapolis, Minn.
14. Nina Woodruff, Belvidere.
15. Mabel Young, (Mrs. Henry Anderson), Teaks, Washington.

1904

1. Ella Barmore (Mrs. Will Harned), Poplar Grove, Ill.
2. Carolyn Carver (Mrs. Earl Hyndman), Foster Ave., Rockford.
3. Warren Cox.
4. Constance Fritz (Mrs. Earle Briggs), R. R. 2, Phoenix, Arizona.
5. Norma Hollister (Mrs. Ward Keating), Belvidere.
6. Eva Jardine (Mrs. Walter Ray), Belvidere.
7. Charles Leydon c/o 1st Vice Pres. office, C. B. & Q. Ry. Chicago, Ill.
8. Sadie Mulligan (Mrs. Ralph Wheeler), R. R., Poplar Grove, Ill.
9. Ida Rhinehart, Belvidere.
10. Ethlyn Stowe, Belvidere, student N. W. U. 3rd year.
11. Ina Titus, Belvidere.
12. Iva Titus, Belvidere, teacher, Gary, Ind.

1905

1. Mollie Brown (Mrs. Phillip Worcester), 836 University Ave, Boulder, Colo.

2. Fannie Frye (Mrs. Sam Ardes), Belvidere.
3. Betty Bengston (Mrs. Victor Hultin), 417 Douglas Ave., Rockford.
4. Oscar Hopkins, Colorado College, Colorado Springs, Colo.
5. Flora Huber (Mrs. Nelson Franklin), Belvidere.
6. Edna Linnel, Belvidere.
7. Walter Lincoln, R. R., Belvidere.
8. Matae Nichols (Mrs. Earl Harned), Belvidere.
9. Mabel Sterling, Belvidere.
10. Lenore Stimes, R. R. 2, Capron, Ill.
11. Ethel Vandewalker (Mrs. John Herbert), R. R., Belvidere.
12. Florence Van Epps (Mrs. Robert Kern), R. R. Belvidere.
13. Bessie Young, Belvidere.

1906

1. Helen Adams, Belvidere.
2. Evea Andrews (Mrs. — — Hicks)
3. Alice Beister, Lafayette, Ind.
4. Anna Barker, Belvidere.
5. Bessie Brittan, Belvidere.
6. Lene Carter, Snowhill Institute, Snowhill, Ala.
7. Ruby Cross (Mrs. Thomas Andrews), R. R., Caledonia, Ill.
8. Louise Eldredge, 440 Maple Ave., Oak Park.
9. Amy Fox, Belvidere.
10. Winifred Fox, Belvidere.
11. Jennie Gould, Belvidere.
12. Emma Johannsen, Argyle, Ill.
13. Mary Kennan, Belvidere.
14. Golden Lanning, Belvidere.
15. Bessie Meehan, Belvidere.
16. Sadie Meehan (Mrs. Wayne Gilberts), Belvidere.
17. Edna Osborne, R. R. 6, Parsons, Kansas.
18. Mary Peters (Mrs. Eleazer Dawe) Dakota, Ill.
19. Harold Quigley, 420 Market St., San Francisco, Cal.
20. Howard Saxton, 125 Indiana Ave., Washington, D. C.

1907

1. Ethel Bardell, 3027 4th Ave., Seattle, Washington.
2. Fanny Barney (Mrs. — — Konzelman), Belvidere.
3. Gertrude Clark, Belvidere.
4. Kathleen Cummings.
5. Hazel Hemmens, Evanston Hospital, Evanston, Ill.

6. Harriett Mariett, R. R. 6, Belvidere.
7. Sidney Sewell, Belvidere, student U. of I., 4th year.

1908

1. Mae Barber, Belvidere,
2. Adaline Benson (Mrs. Roy Ransley), Belvidere.
3. Sylvia Blaser, 19 N. Spencer St., Aurora, Ill.
4. Mary Frye, 1857 Sherman Ave., Evanston, Ill.
5. Anna Page, Fulton, S. D.
6. Hazel Willard (Mrs. Morgan Tucker), Wheaton, Ill.

1909

1. Bessie Bowley, Belvidere, Student Oberlin College, Oberlin, Ohio, 3rd year.
2. May Burton, 3412 Walnut St., Chicago, Ill.
3. Louise Carter.
4. Jessie Gough (Mrs. Ben Spearing) R. R. White Cloud, Mich.
5. Roella Havenor, Belvidere.
6. May Jardine, Belvidere.
7. Carrie Jordan, Belvidere.
8. Carl Freund, Belvidere, Student Rush Medical College, Chicago, 1st year.
9. Helen Lepper, R. R. 4, Belvidere.
10. Flora Moss, Flagler, Colo.
11. Jessie Robinson, Belvidere.
12. Lillian Saxton, Belvidere, student Beloit College, Beloit, Wis., 4th year.
13. Gertrude Burnside, Poplar Grove, Ill.
14. Henry Warren, R. R. Belvidere.
15. Homer Youngs, Twin Falls, Idaho.

1910

1. Marjorie Adams, Belvidere, student U. of Colorado, Boulder Colo., 3rd year.
2. Vera Adams, 993 Bakman Ave., Galesburg, Ill., student Lombard college, Galesburg.
3. Nina Burton, 3412 Walnut St., Chicago, Ill.
4. Thomas Chapman, Belvidere, teacher, Kewanee, Ill.
5. George Dick, U. of California.
6. Pearl Griswold.
7. Marjorie June, Belvidere, student U. of I, 3rd year.
8. Muriel Lampert, Belvidere.
9. Lydia Pinckert, Monee, Ill.

10. Perry Sweeny, Belvidere, student U. of I., 3rd year.
11. Dorothy Terwilliger, Belvidere, student, U. of Colo. 3rd year.
12. Arthur Warren, R. R., Belvidere.
13. Harold Willard, Belvidere student Beloit college, Beloit, Wis., 4th year.

1911

1. Jennie Barker, Belvidere.
2. Harry Bowley, Belvidere.
3. Jessie Davis, Belvidere.
4. Veo Douglas, Belvidere, student, Berea college, Berea, Ky., 3rd. year.
5. Ethel Forsen, Chicago.
6. Marshall Hannah, Belvidere.
7. Almira Keator, Belvidere.
8. Chloe Mitchell, Belvidere.
9. Geraldine Parker, 2237 Cambridge St., Los Angeles, California.

10. Marguerite Patton, Belvidere.
11. Georgia Robinson, Belvidere.
12. Ruth Sewell, Belvidere.
13. Mary Tinkham, Reedsburg, Wis.
14. Ethel Tripp, Belvidere.
15. Mae Walker, R. R. 6, Belvidere.
16. Vera Wicks (Mrs. — — Erwin), Cedar Rapids, Neb.

1912

1. Hattie Barr, Belvidere.
2. Margaret Bennett, Belvidere.
3. Byron Brown, Belvidere.
4. Arthur Dempsey, Belvidere.
5. Freda Heinemann, Belvidere.
6. Donald Huff, Belvidere.
7. Ruth Parkis, Belvidere.
8. Helen Staas, Cor. Chapin and Church Sts., Beloit, Wis.
9. Hazel Taylor, Belvidere.
10. Chris Walz, Belvidere, student Lewis Institute, Chicago.
11. Lila Williams, Belvidere.



UNION HIGH GRADUATES.

1913

1. Hazel Ashton, 45 155th St. Harvey, Ill.
2. Verna Atkins, Belvidere.
3. Vivian Atwood, Belvidere.
4. Dorothy Baird, Belvidere.
5. Blanche Barr, Belvidere.
6. Mary Bartlett, Belvidere.
7. Channing Biester, Belvidere.
8. Irene Bogardus, R. R. 1, Belvidere.
9. Millicent Brooks, Belvidere.
10. Paul Burns, Belvidere.
11. Pearl Burns, Belvidere.
12. Janet Butterfield, Belvidere.
13. Mildred Davis, R. R. 2, Esmond, Ill.
14. Lucile Dawson, Belvidere.
15. Florence Dempsey, Belvidere.
16. Hazel Derthick, Belvidere.
17. Buelah Difford, Belvidere.
18. Ruth Difford, R. R. 1, Lake City, Iowa.
19. Josephine Dwyer, Belvidere.
20. Frances Ferguson, Belvidere.
21. Margaret Fry, Belvidere.
22. Helen Gabel, Belvidere, student N. W. U., 1st year.
23. Ruth Gallagher, Belvidere.

24. Ruby Garrett, 817 Western Ave., Pittsburg, Pa.
25. John Hallott, Belvidere.
26. Blanche Hammond, Belvidere.
27. Albert Harlow, Belvidere.
28. Vera Hovey, Belvidere.
29. Ruth Huber, 219 Stewart Ave., East Peoria, Ill.
30. Helen Johannsen, Argyle, Illinois
31. Foster Johnson, Belvidere.
32. Charlotte Laing, Belvidere, student De Kalb Normal, 1st year.
33. Edith Lamb, Belvidere.
34. Raymond List, Belvidere, student U. of Wis., 1st year.
35. Gertrude Loop, Belvidere, student Lake Forest College, 1st. year.
36. Ned Loop, Belvidere, Illinois, student Deerlodge College, Montana, 1st year.
37. Glenn Lucas, R. R. 2, Belvidere.
38. Florence Lyons, Belvidere.
39. Thomas Marshall, Belvidere.
40. Dellamae McLean, R. R. 2, Poplar Grove, Ill.
41. Kenneth Merrill, Belvidere.

42. John Boyd Meyers, Belvidere, student N. W. U. Law school, 1st year.
43. Mamie O'Brien, Belvidere.
44. Helen O'Connor, Belvidere, student Rockford College, Rockford, 1st year.
45. William Peart, 1137 West 11th Street, Los Angeles, Calif.
46. Susan Penning, Belvidere, student, Belvidere Business College, 1st year.
47. Lois Petty, Belvidere.
48. Dessie Phelps, R. R. 5, Belvidere.
49. Neva Piel, Belvidere.
50. Clarence Porter, Belvidere, student U. of I, 1st year.
51. Mildred Ritchie, Belvidere.
52. Helen Roscerans, Belvidere.
53. Blanche Stebbins, Belvidere, student U., Des Moines, 1st year.
54. Esther Streeter, Belvidere.
55. Dan Sullivan, Belvidere.
56. Hannah Thomas, Belvidere.
57. Claude Tripp, Belvidere, student Rockford Business College 1st year.
58. Lila Vincent, Belvidere.
59. Ada Walker, R. R. 6, Belvidere.
60. Betty Westphal, Belvidere, student N. W. U. 1st year.
61. Florence Wheeler, Belvidere.
62. Lucile Wheeler, Belvidere.
63. Marie Louise Witbeck, Belvidere student I. W. C., Jacksonville, Ill., 1st year.
64. Fern Wixon, Belvidere.
65. Burton Wright, Belvidere student U. of Wis., 1st year.
66. Margaret E. Wyman, Belvidere.

WHO'S WHO *and* WHY.

DAVID MELZER: A junior, somewhat brainy but not so brainy as he thinks he is. Has a good voice but uses it too hard. Has confidence in proportion to his avoirdupois.

IVA COLBURN: A Senior, not as uppish as her facial appendage would indicate. Much ado about nothing and a great deal to do about something. Never wastes an opportunity for a jolly time. Ready for any lark and a firm believer in the ability of a Ford.

BUDDY CLEAVER: Slick as a whistle, quick as a flash; could not live without the stimulus of athletics. Poor on speeches; but right there with grins.

CHARLOTTE GARVEY: A fresh Freshie who holds a splendid opinion of her own good wit. She is a typical example of her class, the kind that some day will make a corking upper classman when—experience has done its work.

GLADYS CARLSON: A hard working "pusson", a strict librarian, a mighty good editor, a better leader than follower. One of the sort who gets behind and pushes hard; a bit inclined to worry before there is need of worry; on the whole, an all round good "kid."

"KITTY" BENDER: A Senior, who tries to be so very nice that he is thought a bit queer; really very brainy if he only knew when to express his opinion and when to keep it to himself. A combination of musician and farmer.

SIDNEY STARR: As good as gold in school, has many of the characteristics of the tortoise who raced with the hare. Too plodding and steady, not enough "git up and git" to him. The kind that takes about three years to wake up, but who once awake, will make things hum.





1. Roughnecks.
2. O, You Sponge!
3. Colonial Tea.
4. Our Post Grads.

5. A Tough Bunch.
6. Gert and Bill.
7. Public Speaking?
8. Two of a Kind.

9. Look Pleasant, Please
10. O, Slush!
11. Which Is Which?
12. One, Two, Three, Dip.

The CALENDAR.

*if you do not say funny things,
And you—and you—and you—,
How could we make the calendar
For you—and you—and you?*

JANUARY

5. Assembly rearranged to increase number of frontseats.
6. No one had a lesson because the books were mixed.
7. Books found! Last excuse for flunking gone.
8. Eighth period reinstated. David Melzer stays.
9. Florence Stanton wears her hair down in a braid. Evidently she didn't hear the alarm.
12. Smith evidently is concealing something valuable in his vest pocket.
13. Louis Whitney appears with sign "Hired." Miss Umbach: "The other side should say 'vacant'."
14. Professor Smith's secret disclosed — bone rimmed goggles — appropriate.
15. Eli Biester started on career of law, (or bluffing), we hardly know which.
16. Miss Gilchrist rebukes Bernard for statement concerning girls. Bernard pulls back coat and displays sign, "Chicken Inspector, No. 23."
19. Miss Gilchrist asks Margaret Peale to give example of a noun whose plural ends in "s", or "es". Margaret: "Banano"
20. Girls Literary Society meets—Tango studies.
21. Bernard, fearing expulsion from Eng. IV because he forgot to bring book: "Miss Gilchrist, make Mr. McGonigle give me my book!" Whereupon, Miss Gilchrist goes over and takes Steve's perfectly good book, and gives it to poor, abused Bernard.
22. Miss Fellows in Assembly: "This is so sudden!"
23. Rockford referee earns \$12.50—really earns it too— offered permanent job—by Rockford.
26. Steve begins to study Geometry—why?
27. Steve stays home from Majestic to study Geometry—why?
28. Dark, rainy day. No one recites in German I. Miss Graves: "Wake up pupils, it never gets too dark to talk."
29. Date for Geometry final announced. Mystery of Steve's industry brought to light!
30. Steve and Mr. Alman talking in Room 6. Miss Fellows: "Boys! Boys! No talking."

FEBRUARY

1. "Da Da" stays home from church to study for exams.
2. Freshmen panic. Trembling with fear of exams, taken for St. Vitus' Dance.

3. Chemistry: Neva Newell: "Har Har".
Mr. Cole: "Miss Newell, was that you? Well, I'm ashamed of you."
- Neva: "Well, it tickled me."
4. Steve witness in drunk case. Earns \$1.20. Steve's curse due.
5. Geom: David, finds himself in same seat as last year. Miss Fellows: "This is the seat you behaved in last year." David: "Yes, and I flunked in that seat too."
6. Chem: Mr. Cole: "Hold up all of your hands, all that want to take the review course. Hold them until I get them. I mean until I get your name!"
9. Da Da stays for eighth period.
10. Public Speaking—Miss Adams: "Never use your shoulders in ordinary speaking." Florence Althaus. "I never do."
11. Lecture by Dr. Ferris: "Farewell, oh apricot groves! Farewell, oh Roman soldiers! Farewell, oh chariot ruts!"
12. Sadae McCartney to Berneita Moran; "Are you the joke column?"
13. Public speaking: Gladys Whiting: "Sail forth into the ships, O, Sea!"
16. Chem.—Mr. Cole explaining floating: "Anything which displaces more water than its own weight, can float." Duke Whitney, "Melzer floats."
17. Public Speaking: Miss Adams: "Where should the arms curve from?" Bess Sigurd: "From the waist."
18. Geom. Miss Fellows: "I will seat you geometrically." (meaning alphabetically.)
19. English III. David: "I read Freneau's poem, "The Honey-suckle," but I didn't get much out of it."
20. Da Da stays for eighth period.
21. Tournament. We start right by defeating Polo 51 to 23.
23. Never mind, we'll get the horse next year.
23. Eng. II. Miss Adams: "Where does the semi-colon come?" Flossie Althaus: "After Foxe's Brushes."
24. Shorty Spencer froze a toe.
25. It thawed out again.
26. Do you know the latest pose for having a picture taken?" "No. What is it?" "Stand on the ash pile!"

MARCH

2. Charles Courville was going to tell a story in English. He began thusly: "It was a beautiful September Morn—"
3. Marguerite Sullivan has a new dress! Cute!
4. There was a very queer odor in the school house. Some said it was carbolic acid, some said sulphur, others said moth balls. Whatever it was, was not discovered.
5. Chem.—Steve McGonigle: "Mr. Cole, what makes a person's

nose bleed, when he is on top of a mountain?" Bob Keefe—"Too much pressure on the nose, I guess."

6. Eng. III.—Miss Gilchrist: "He had yellow flowing hair on his roof."

9. Miss Lindquist: "The earth must be millions of years old, don't you think so, Louis?" Louis Mayer: "Yes, it seems as though it must have been before God was born."

10. Helen Rosecrans was heard to remark while passing: "Oh, dear, I am getting squashed in all directions."

11. Elliot Biester honorably dismissed from Geometry.

12. Miss Vandervort: "What made the Romans think there would be a second Punic war?" Bailey Porter: "Oh, they felt it in their bones."

13. FRIDAY, the thirteenth.

Boyd Watkins fell down stairs. Two years ago Miss Wells fell down the same stairs and took off both her heels.

Elliot sent from Geometry again.

Florence Althaus tardy, one cylinder on the "Stutz" was missing.

16. Mr. Cole gave Fanny her daily exercise.

17. Yellow pencils arrive in time for St. Patrick's Day.

Freshmen class didn't need to wear anything green.

18. Bailey Porter reading in Silas Marner: "'Ay, they're gone where it's hot enough to melt them.' Shall I go on?" Miss Adams: "Yes."

19. Prof. Cole: "Sm-ee-ith." Bernard: "What do you want?" Cole: "Go on home."

20. Freshmen issue of the "Scoop."

Freshmen party.

23. Bob Wright orating in Advanced Public Speaking: "Honesty makes one cheerful." Verne Douglas: "Yes—cheerful liar."

24. Sadae McCartney to Mr. Cole: "How could you change peat into Cole (coal) if you had enough pressure and heat?"

Bob Harlow: "Pete Who?"

25. David made sergeant of eighth period.

Reserved for Challenge Day.

26. Seniors challenge H. S. to football contest.

Sophomores challenge H. S. to basketball contest.

Seniors challenge H. S. to debating contest.

W. C. T. U. challenge any one to local option contest.

Fritz N. Humphrey challenges H. S. to a wrestling contest.

26. Bernard Smith: "David Melzer fell down stairs with fifteen glasses of water and never spilt a drop."

Cuthbert Gabel: "Why, how could he do it?"

Bernard: "Kept his mouth shut."

APRIL.

2. Lyle Gillette went to sleep in interesting algebra class. Spring fever having its effect.

3. Da Da is learning to be a ball player. Great success. Spring fever having more effect.

4. Lyle G. Went to sleep in algebra class.

5. Miss Lindquist: "What's the difference between a cavalry and an infantry?"

Mabel Weaver: "The only difference is, one's younger than the other."

6. Hahold Neff asked Miss Chewning if he could speak.

Miss Chewning: "Didn't you just hear me refuse some one else?"

Harold: "Yes, but that's no sign you won't let me."

9. Miss Lindquist: "What kind of air holds moisture?"

Sidney Luhman: "Damp air."

10. Debate with Beloit.

B. H. S. were very honorably defeated debating with Beloit H. S. The B. H. S. team was composed of cheerful losers.

13. Eli Biester dishonorably dismissed from Geometry class.

14. Steve to Duke: "What part of the operetta do you like best?"

Duke: "My part with Blanche. I could do it forever."

15. Louis Whitney having been taught the art of stage kissing was heard to remark: "Some practice, some practice."

15. Operetta Dress Rehearsal.

Operetta—"Princess Chrysanthemum." Great Success.

21. Miss Chewning kept her assembly room for a tea party, but forgot to serve the refreshments.

22. The girls of Literary Society debated on "Hair Rats." Judges decided that they are of no benefit to humanity.

RECIPES

Eighth Period.

In a front seat, with a fierce teacher in front of you, cream together two hard questions. With unheard whispers from neighbor add slowly, some foolish answers. This recipe is perfect; if more is wanted, double the recipe.

PRETTY FACE.

In front of High School mirror, rub on a box of Hazel's paint, add carefully one can of Bess Sigurd's powder. Then proceed putting on Helen D.'s eyebrow pencil. After this task is completed, put on one of M. Sullivan's smiles. The results are very effective.

BLUFFER.

Having an easy teacher and several minutes to think, wrinkle your forehead and cast your eyes upward. Add two heavy questions and one clever brain. If more information is wanted, call on Steve.

INDEPENDENT ORDER OF SUNS OF REST.

Color	Drab	Symbol	Davenport
Flower	Poppy	Salution	z, z, z, z Z
Password	Now I Lay Me	Salute	o, o, o, Oh
Time of Meeting			Any Time
Motto			"I Should Worry."
Master of Sleep		STEVE McGONIGLE	
Keeper of Dreams		LOUISE WHITMAN	
Marshal of Loafing		VERNE DOUGLAS	
<i>Noted Members.</i>			
Louis Whitney		Francis Keefe	
Bob Harlow		Ethel Conley	
Elisabeth Witbeck		Bernard Smith	
Evalou Hancock		Ruby Humphrey	
		Harold Fischer.	

TWELVE LABORS OF HERCULES ALMAN.

1. Canned Edward Benson.
2. Prevented the use of snuff.
3. Squelched Bernard Smith.
4. Reformed Ernest Humphrey.
5. Became a carpenter during Christmas vacation.
6. Installation of Order.
7. Made the teachers attend teachers' meeting.
8. Started a rival to congress.
9. Kept Marion Silvius from working too hard.
10. Kept the treasurer of the Board of Education busy.
11. Taught the Freshmen.
12. Showed Louis and Blanche how their duet could be made most effective.

FACULTY DEFINED.

Mr. Reisner	High Mogul
Mr. Alman	Kansas Grasshopper
Miss Graves	Eine Deutsche Shark
Miss Adams	X=Unknown Quantity
Miss Umbach	A Peach
Miss Vandervort	"Fainting Bertha"
Miss Gilchrist	Autocrat of English Department
Miss Chewning	A Flirt
Miss Harvey	A Latin Joke
Miss Wells	Equation
Miss Lindquist	Indefinable
Mr. Heitter	On the "Square"
Miss Lewis	A Picture
Miss Gary	Cloak Model
Mr. Cole	Cloak Salesman
Miss Fellows	A proposition

VERSE *or* WORSE.

THE LITERARY SOCIETY

*'Tis strange. 'Tis sad, Indeed it is,
And yet 'tis very true,
Eighteen appeared one Wednesday night,
But refreshment night it grew.*

THE ORCHESTRA

*Last year the great Chicago Symphony
Was ranked as first and held a mighty name,
But now their popularity is gone
For Bender's Orchestra has quite eclipsed their
fame.*

THE HIKERS

*We wonder how much profit
The trampers really get
When they take the car out to carry the eats
And back because they've et.*

THE DEBATING TEAM

*When "Mother" and the boys begin to spout
'Tis time to settle down and rest your dome,
For each one has the precious gift of gab,
And they can argue till the cows come home.*

TWO *of a* KIND.

Bessie Mulligan
Bernard Smith

Margaret Peale
Charles Courville

Earl McCoy
Ive Mae Colburn

Avis Soost
Gertrude Slater

Helen Goodwin
Laura Kahler

Elisabeth Witbeck
Cuthbert Gabel

James Sexauer
Marguerite Meyers

David Charles Melzer
Gladys Whiting

Stephen McGonigle
Louise Whitman

Florence Stanton
Hazel Pratt

Irene Powers
Rosa Penning

Marguerite Sullivan
Helen Delavergne

Buddie Cleaver
Ruby Dale

Elliot Biester
Charles Ames

George Silverman
Eunice Peart

Elmer Wilkey
Ramona Bollman

Donald Huff
Robert Wright

Daisy Comstock
Elizabeth Fifield

Robert Harlow
Robert Keefe

Lee Poyer
Mattie Wollenburg

The Gold Dust Twins
Ruth Sager
Elizabeth Sager

QUESTCHING DEPARTMENT.

Dear Editors

Thru your esteemed column will you please tell me why Hon. David Chas. Melzer endeavored to comb his hair pompadour for about a week?

Yours, GOSH DARN LAING.

ANSWER: From some sources we lern that he is lerning too becum a grate oreter end debater under the tutelage of Miss Adams end that he is striving to emilate the ideals set by Cal Houn, Clay, Smeeith and Stephen A. and Verne K. Douglas.

You Dearest Editor:—

Will you please tell me why the boys all call me on the telephone and the remedy for it annoys me dreadfully, really it does.

Yours for ever and ever, GLADYS BONE.

ANSWER:—Yoo cannot enveigle mee into giving eny 1 compelmments so I wud advize yoo to werk gentely with a axe upon the transmuter uv ur fone intil you hev it finely pulverized, thin place the fragments in a bag for safe keping. The edvanteges uv this sistum is thet yoo hev the convenience of the telephone in the hous.

Dear Eddeter:—

Can you give me a remedy for the mumps?

STEVE McGONIGLE.

ANSWER:—first take a pint of turpentine and place in a cup; then perchase a reel egg ef yoo ken efford it, if not abstain a artecial 1; beet it unmercifully fer wun half our, thin dround it in the turpentine; these es rether hard on the eg but vilent malidys hez gota have vilent treetment. Add the follos to the micksture:

Wun haf ounce corrosive sublimate; 2 ounces red pepper, wun haf ounce radium. Shake feerely end take enturnally fur 1 weak. Ef efter these treetments you aint releevd assault an doctor and yoo will bee.

Dear Editor:—

Will you please tell me how to wear the following: One diamond set Shriner pin, one Junior class pin, one Senior class pin, (slightly used), one black ring inlaid with silver, one large souvenir brooch from Panama

Yours sincerely, F. GERTRUDE ALTHAUS.

ANSWER: Exursize deligently end en a fue munths yoo will be large and strong enuf to wear them ez yoo ar tall enuf now.

Dear Editor:—

I have received an awful wound in my heart. What shall I do?

Yours, IVA MAE COLBURN.

ANSWER: Remove the wound and send the piano (we mean organ) to the vacuum cleener cuz we feer thet it is only superficial.

Dear Editor:—

That Marcellus and George Silverman just bother me all the time. Will you please make them stop?

BERTHA MELZER.

ANSWER: Wee hev spuk to the militia.

Dear Editor:—

Please tell me why they call Mister R. D. Hall, the "Conversational Brook."

Yours truly, MERCEDEEZ, Belvidere.

ANSWER: From the fect that when oncet he begins he goes on forever. Be thet reeson enuf?

To the Editor:—

I am desperately in love with one of my esteemed teachers. What shall I do?

Respectfully, WALTER DALLAS.

ANSWER: We deduce that your kase is 1 of grate seriousness. See a osteopathet et wunst.

Deer editet:

Doo yoo think ez grate briting hez eny rite too bild a dam in thee kishwaughkee river. pleeze rush the answer.

severely, BOID WATKINS, secund striet.

ANSWER: We hezitate to think so.

Editor:

Give short history of U. S.

VINCENT O'CONNOR, America

ANSWER: America wuz discivered en 1492 or 1942 end hez ben heer ever since.

From the Belvidere Dictionary.

BAND: *a heroic group of men, brave enough to listen to each other.*

HAT: *See Steve's father's other son's store.*

HIGH SCHOOL: *Incubator of mischief.*

HOTEL: *"There aint no sich a thing."*

OPERA HOUSE: *A building which was once used for an opera.*

PARK: *A pasture containing several cowpaths, a drinking trough, and a shed.*

RIVER: *A magnificent body of water bordered on one side by the north bank, on the other side by the south bank, on the top by air and on the bottom by mud.*

STATE STREET: *See Chicago Dictionary.*

STREET CAR: *A combination of cracker box and rocking horse, used unless needed.*

OUR ATHLETES!—ACCEPT NO SUBSTITUTE.

Never in the history of Belvidere, never in the history of this country, never in the history of the world, have such athletes been produced as we have yelled for this season. Of Titanic build, indomitable courage, and prodigious nerve, they have defied the world. They have predominated in the number of games won and lost; they are worthy to be classed with the Greeks of old. Whether this is due to the fact that the democrats rule or to the operation upon King Gustave, is unknown at this writing.

The accompanying photograph shows our model athlete. This specimen is not exceptional, but, on the other hand, it is one of the power type. Observe the highly developed chest, the prominent muscles, the grand build, and the manly setting of the teeth. The chest measures 36 inches with a 5 inch expansion. The tongue measures 2 inches when inactive, and 12 inches in action.



How and Where We Spend Our Leisure.

Clara Mae Dorothy Spencer—keeping her love affairs untangled.

Francis Keefe—everyone knows how he spends it.

Marion Davis—who says she has leisure anyway?

Walter Dallas—studying Latin(?)

Jay Bennett—flirting.

Verne Douglas—doing anything everywhere.

Bessie M.—giggling.

Avis Soost and Gert. Slater—helping Kitty get his English.

Ethel Dodge—Cleaning out her desk.

Liz Fifield—auto riding. Daisy C.—ditto.

Georgia H.—Sleeping and crimping her hair.

Cuthbert G.—Over to Witbeck's.

Alice Hies—dreaming of pickles and canned corn.

Louis Whitney—Advertising his occupation.

Miss Gilchrist—Deploring the swiftness of time.

Mr. Cole—escorting (who?)

David M.—Showing off his good looks.

Mr. Alman—pulling up screws.

Iva C.—Holding down her nose.

MOTHER GOOSE *Revised.*

Who's afraid! ! !

Earl Mc. dares not venture here,

When he knows that F. R.'s near.

I. M. C.

John Casey, bedad,

Was a bright Irish lad,

Who loved to work hard—at his ease,

"When I grow up," said he,

"I'll a gentleman be

For then I can do as I please.

E. Biester is a handsome lad

Of motorbykes he sings.

He wears a tie and fierce moustache,

And many other things.

He looks just like a robber bold,

As down the street he fans,

Real bandits lived in times of old,

In distant foreign lands.

We're all at our ease

Who have credits and E's;

But there's others who simply have
not.

They didn't get through,

But there are only a few

Who'll have to stick in this spot.

Harry L. Cole in the classrooms:

1—2 "That'll do."

3—4 "Shut the door."

5—6 "Chairs all fixed".

7—8 "All get straight".

9—10 "He takes his pen."

11—12 "Now he delves."

"Zeros and Can, zeros and can,

When we started school,

Our troubles began."

—Benson, Harlow and Keefe

A FLUNK

As round as a lemon, as bad as a pup,
Work as hard as you can, you can't
bring it up.

Miss Fellows once was tossed up in a
basket,

One hundred times higher than you
can look,

And where she was going I could not
but ask it,

For in her hand she carried a book.

"O, Flora! O, Flora!! O, Flora!!!
quoth I,

"Whither! O, whither!! O, whither!!!
so high?"

"To teach them Geometry up in the
sky,

There's no Freshmen there, so I bid
you Good-by".

A man of words and not of deeds,

Is like a garden full of weeds.

For when the weeds begin to grow,

Then doth Da Da overflow.

When Whitney was a little boy,

He had but little wit,

It was a long, long time ago

And he hasn't any yit.

"Nor ever shall," he says, "until that
I die,

For the longer I live the more fool
am I."

Charles Courville Wag,

Ate the pudding and left the bag.

*Here's what you'e been
looking for--*

Steve's
Baby Picture.



